



Rhode Island Department of Labor and Training

Weekly Update of Claims Activity

Week Ending: April 9, 2011

Unemployment Insurance

Initial Claims – 1,435 initial claims were processed during the week ending 4/9/11, an increase of 314 from the previous week, and a decrease of 748 from a year ago. The number of initial claims filed to date is down 8.6 percent below last year and down 42.1 percent from two years ago.

Continued Claims – 17,660 continued claims were processed during the week of 4/9/11, a decrease of 1,552 from the previous week and a decrease of 1,997 from a year ago. The number of continued claims filed to date is down 7.5 percent from a year ago and down 31.8 percent from two years ago.

Workshare – gives employers an alternative to layoffs by allowing employees to work reduced hours and collect a percentage of regular UI benefits to compensate for lost pay. This week, 77 initial claims and 1,267 continued claims were processed. An estimated 20 layoffs were prevented this week, as a result of Workshare.

Emergency Unemployment Compensation 08 – EUC08, which became effective July 6, 2008, provides up to 53 weeks of federally funded benefits to eligible individuals who exhausted their UI claims. This week there were 476 new EUC08 claims processed and 13,942 continued claims processed (6,233 under tier I, 3,858 under tier II, 2,579 under tier III and 1,272 under tier IV).

Extended Benefits – are payable to individuals who have exhausted UI or EUC08 claims. This week, 120 new EB claims and 2,485 continued EB claims were processed.

Exhaustions – 557 individuals exhausted their regular payments this week, a decrease of 57 from the previous week and a decrease of 115 from a year ago. There were 265 individuals that exhausted EUC08 and 91 individuals that exhausted EB.

Temporary Disability Insurance

Temporary Disability Insurance – 787 initial claims and 7,610 continued claims were processed for Temporary Disability Insurance. The average weekly TDI payment is \$440 per week. Rhode Island is currently paying an average of 10.7 weeks per new claim.

	Initial Claims			Continued Claims	TOTAL - Initial and Continued Claims			
	Total	New	Additional		Current Week	Previous Week	Year Ago	Two Years Ago
Total - All programs*	2,346	1,578	768	35,853	38,199	39,865	44,842	47,912
UI Claims	1,435	906	529	17,660	19,095	20,333	21,840	27,619
Change from:								
Previous Week	314	239	75	-1,552	-1,238			
Year Ago	-748	-565	-183	-1,997	-2,745			
Two Years Ago	-386	-129	-257	-8,138	-8,524			
EUC08 Claims	663	476	187	13,942	14,605	14,820	19,452	11,691
Extended Benefits	139	120	19	2,485	2,624	2,610	878	884
Interstate-Liable	32	22	10	499	531	614	687	943
Workshare	77	54	23	1,267	1,344	1,488	1,985	6,775
Workshare Equivalency	20	14	6	371	391	380	474	1,602
UI Exhaustions	-	-	-	557	557	614	672	758
EUC08 Exhaustions	-	-	-	265	265	283	617	282
EB Exhaustions	-	-	-	91	91	102	28	40
TDI Claims	787	632	155	7,610	8,397	8,151	8,435	8,566
Change from:								
Previous Week	83	54	29	163	246			
Year Ago	-157	-158	1	119	-38			

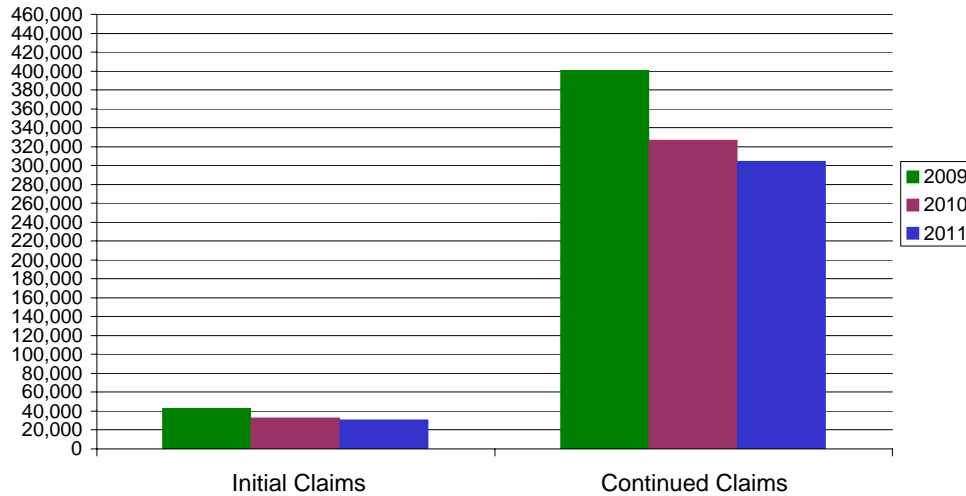
* Includes UI, EUC08, EB, Workshare & Interstate Liable.

Equal Opportunity Employer / Program / Auxiliary aids and services available upon request to individuals with disabilities / TTY via RI Relay 711.

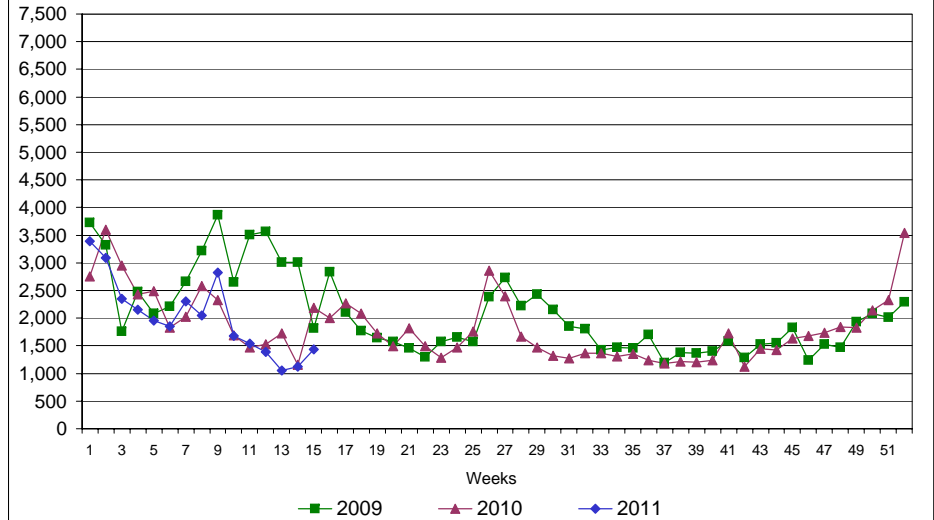
Rhode Island Department of Labor and Training

April 9, 2011

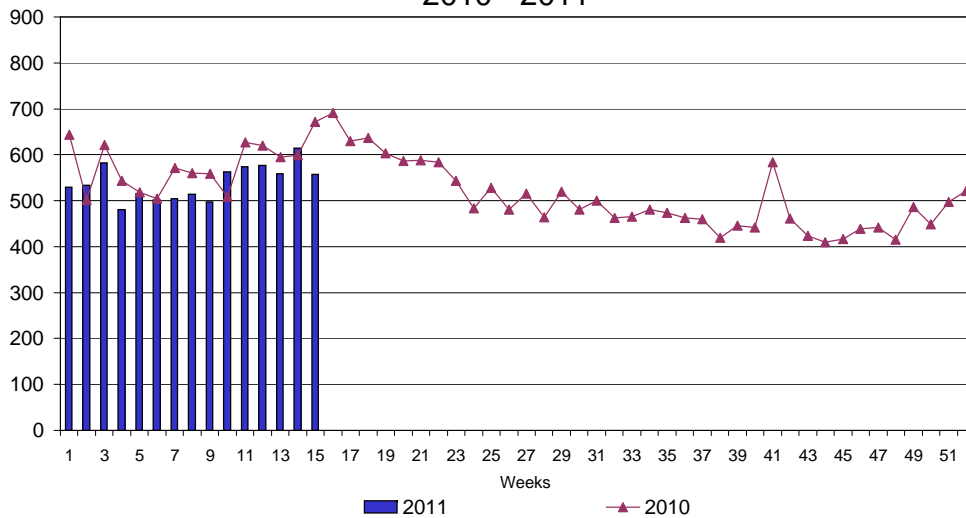
UI Claims Comparison Year to Date



UI Initial Claims 2009 - 2011



UI Exhaustions 2010 - 2011



TDI Claims Comparison Year to Date

