



## Rhode Island Department of Labor and Training

# *Weekly Update of Claims Activity*

*Week Ending: April 16, 2011*

### **Unemployment Insurance**

**Initial Claims** – 1,515 initial claims were processed during the week ending 4/16/11, an increase of 80 from the previous week, and a decrease of 489 from a year ago. The number of initial claims filed to date is down 9.7 percent below last year and down 44.3 percent from two years ago.

**Continued Claims** – 16,802 continued claims were processed during the week of 4/16/11, a decrease of 858 from the previous week and a decrease of 1,375 from a year ago. The number of continued claims filed to date is down 7.6 percent from a year ago and down 32.8 percent from two years ago.

**Workshare** – gives employers an alternative to layoffs by allowing employees to work reduced hours and collect a percentage of regular UI benefits to compensate for lost pay. This week, 49 initial claims and 1,856 continued claims were processed. An estimated 11 layoffs were prevented this week, as a result of Workshare.

**Emergency Unemployment Compensation 08** – EUC08, which became effective July 6, 2008, provides up to 53 weeks of federally funded benefits to eligible individuals who exhausted their UI claims. This week there were 507 new EUC08 claims processed and 13,765 continued claims processed (6,155 under tier I, 3,823 under tier II, 2,596 under tier III and 1,191 under tier IV).

**Extended Benefits** – are payable to individuals who have exhausted UI or EUC08 claims. This week, 77 new EB claims and 2,416 continued EB claims were processed.

**Exhaustions** – 650 individuals exhausted their regular payments this week, an increase of 93 from the previous week and a decrease of 41 from a year ago. There were 258 individuals that exhausted EUC08 and 88 individuals that exhausted EB.

### **Temporary Disability Insurance**

**Temporary Disability Insurance** – 827 initial claims and 7,399 continued claims were processed for Temporary Disability Insurance. The average weekly TDI payment is \$435 per week. Rhode Island is currently paying an average of 10.8 weeks per new claim.

	<b>Initial Claims</b>			<b>Continued Claims</b>	<b>TOTAL - Initial and Continued Claims</b>			
	<b>Total</b>	<b>New</b>	<b>Additional</b>		<b>Current Week</b>	<b>Previous Week</b>	<b>Year Ago</b>	<b>Two Years Ago</b>
<b>Total - All programs*</b>	2,416	1,442	974	35,341	37,757	38,199	44,330	47,665
<b>UI Claims</b>	1,515	791	724	16,802	18,317	19,095	20,181	28,131
Change from:								
Previous Week	80	-115	195	-858	-778			
Year Ago	-489	-648	159	-1,375	-1,864			
Two Years Ago	-1,318	-448	-870	-8,496	-9,814			
<b>EUC08 Claims</b>	715	507	208	13,765	14,480	14,605	18,113	11,644
<b>Extended Benefits</b>	94	77	17	2,416	2,510	2,624	1,378	1,057
<b>Interstate-Liable</b>	43	25	18	502	545	531	595	978
<b>Workshare</b>	49	42	7	1,856	1,905	1,344	4,063	5,855
<b>Workshare Equivalency</b>	11	9	2	488	499	391	990	1,535
<b>UI Exhaustions</b>	-	-	-	650	650	557	691	743
<b>EUC08 Exhaustions</b>	-	-	-	258	258	265	526	1,852
<b>EB Exhaustions</b>	-	-	-	88	88	91	19	26
<b>TDI Claims</b>	827	680	147	7,399	8,226	8,397	7,681	9,231
Change from:								
Previous Week	40	48	-8	-211	-171			
Year Ago	-105	-100	-5	650	545			

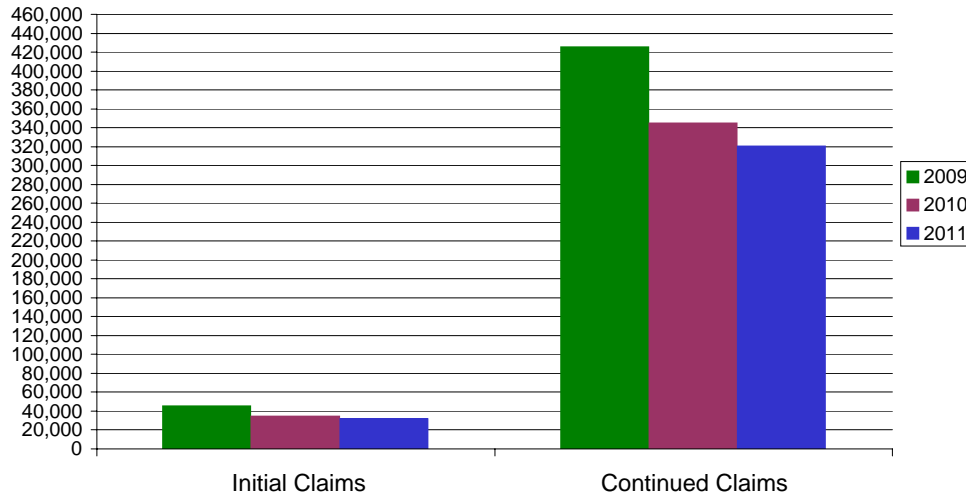
\* Includes UI, EUC08, EB, Workshare & Interstate Liable.

Equal Opportunity Employer / Program / Auxiliary aids and services available upon request to individuals with disabilities / TTY via RI Relay 711.

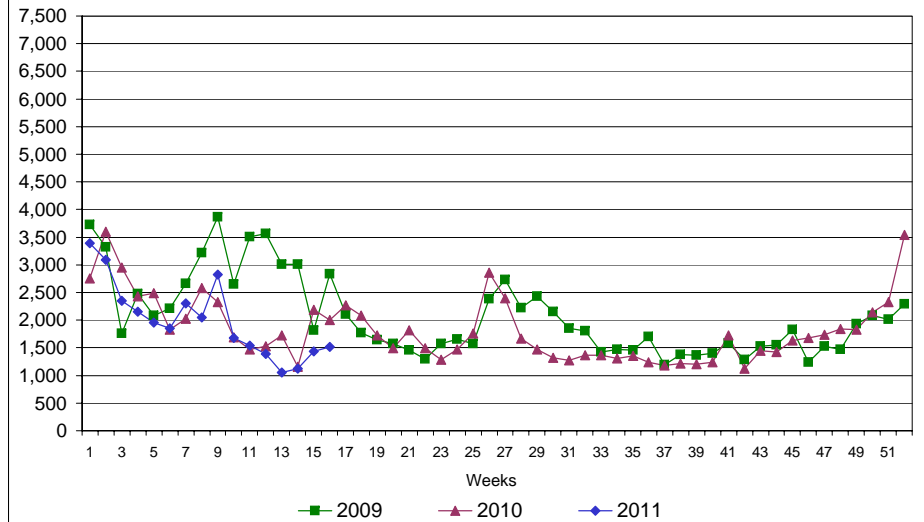
# Rhode Island Department of Labor and Training

## April 16, 2011

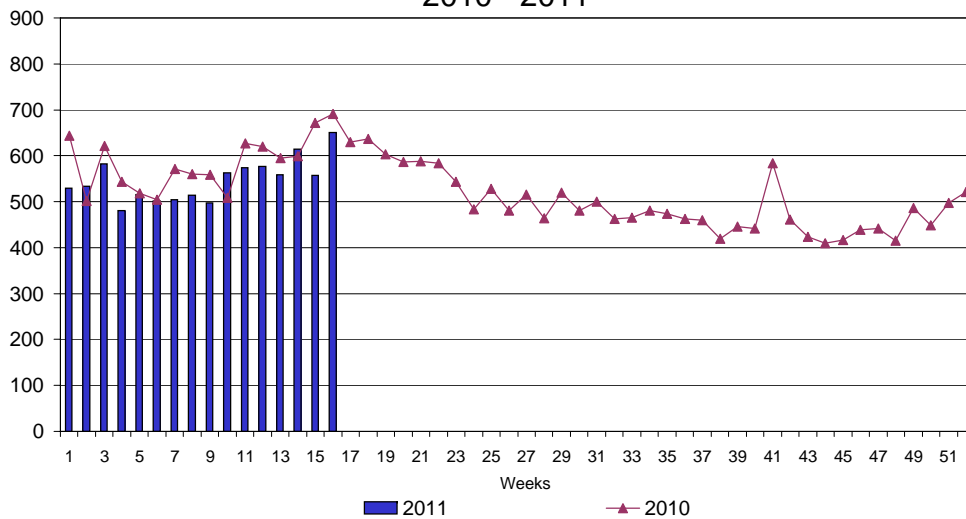
### UI Claims Comparison Year to Date



### UI Initial Claims 2009 - 2011



### UI Exhaustions 2010 - 2011



### TDI Claims Comparison Year to Date

