



## Rhode Island Department of Labor and Training

# *Weekly Update of Claims Activity*

*Week Ending: April 23, 2011*

### **Unemployment Insurance**

**Initial Claims** – 3,021 initial claims were processed during the week ending 4/23/11, an increase of 1,506 from the previous week, and an increase of 752 from a year ago. The number of initial claims filed to date is down 6.7 percent below last year and down 37.8 percent from two years ago.

**Continued Claims** – 16,224 continued claims were processed during the week of 4/23/11, a decrease of 578 from the previous week and a decrease of 2,158 from a year ago. The number of continued claims filed to date is down 7.8 percent from a year ago and down 34.3 percent from two years ago.

**Workshare** – gives employers an alternative to layoffs by allowing employees to work reduced hours and collect a percentage of regular UI benefits to compensate for lost pay. This week, 44 initial claims and 1,212 continued claims were processed. An estimated 10 layoffs were prevented this week, as a result of Workshare.

**Emergency Unemployment Compensation 08** – EUC08, which became effective July 6, 2008, provides up to 53 weeks of federally funded benefits to eligible individuals who exhausted their UI claims. This week there were 518 new EUC08 claims processed and 13,888 continued claims processed (6,246 under tier I, 3,879 under tier II, 2,627 under tier III and 1,136 under tier IV).

**Extended Benefits** – are payable to individuals who have exhausted UI or EUC08 claims. This week, 50 new EB claims and 2,470 continued EB claims were processed.

**Exhaustions** – 600 individuals exhausted their regular payments this week, a decrease of 50 from the previous week and a decrease of 30 from a year ago. There were 170 individuals that exhausted EUC08 and 210 individuals that exhausted EB.

### **Temporary Disability Insurance**

**Temporary Disability Insurance** – 685 initial claims and 7,098 continued claims were processed for Temporary Disability Insurance. The average weekly TDI payment is \$440 per week. Rhode Island is currently paying an average of 10.9 weeks per new claim.

	Initial Claims			Continued Claims	TOTAL - Initial and Continued Claims			
	Total	New	Additional		Current Week	Previous Week	Year Ago	Two Years Ago
<b>Total - All programs*</b>	3,928	1,681	2,247	34,349	38,277	37,757	44,184	46,831
<b>UI Claims</b>	3,021	1,064	1,957	16,224	19,245	18,317	20,651	28,851
Change from:								
Previous Week	1,506	273	1,233	-578	928			
Year Ago	752	-145	897	-2,158	-1,406			
Two Years Ago	909	24	885	-10,515	-9,606			
<b>EUC08 Claims</b>	755	518	237	13,888	14,643	14,480	18,220	10,363
<b>Extended Benefits</b>	66	50	16	2,470	2,536	2,510	1,338	1,725
<b>Interstate-Liable</b>	42	13	29	555	597	545	562	943
<b>Workshare</b>	44	36	8	1,212	1,256	1,905	3,413	4,949
<b>Workshare Equivalency</b>	10	8	2	281	291	499	787	1,352
<b>UI Exhaustions</b>	-	-	-	600	600	650	630	769
<b>EUC08 Exhaustions</b>	-	-	-	170	170	258	459	548
<b>EB Exhaustions</b>	-	-	-	210	210	88	25	48
<b>TDI Claims</b>	685	558	127	7,098	7,783	8,226	8,119	8,242
Change from:								
Previous Week	-142	-122	-20	-301	-443			
Year Ago	-238	-206	-32	-98	-336			

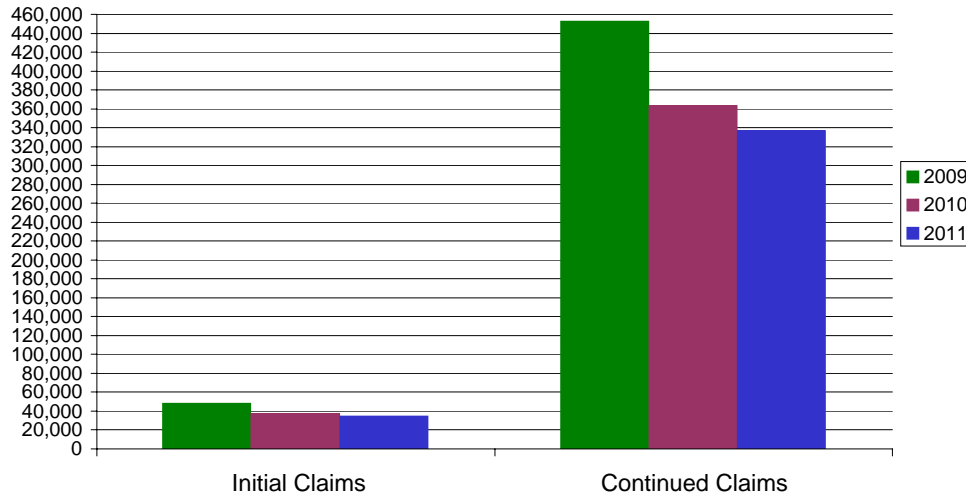
\* Includes UI, EUC08, EB, Workshare & Interstate Liable.

Equal Opportunity Employer / Program / Auxiliary aids and services available upon request to individuals with disabilities / TTY via RI Relay 711.

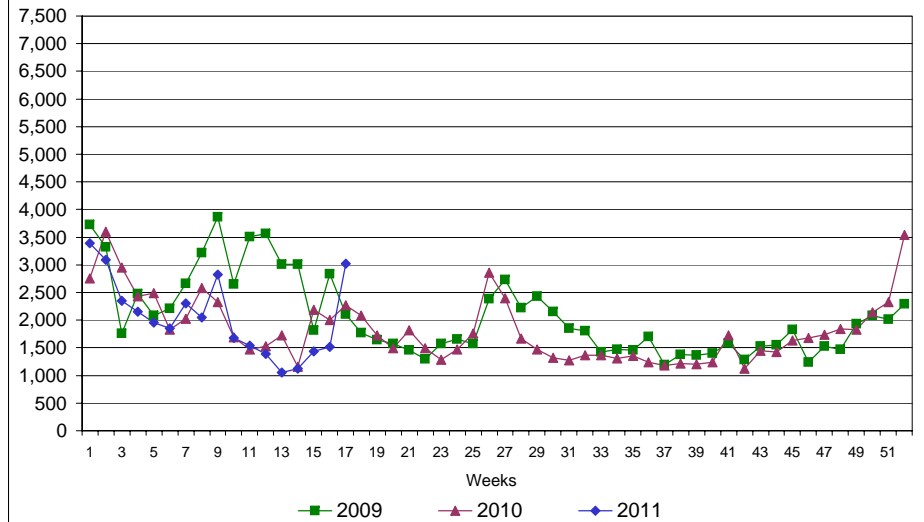
# Rhode Island Department of Labor and Training

## April 23, 2011

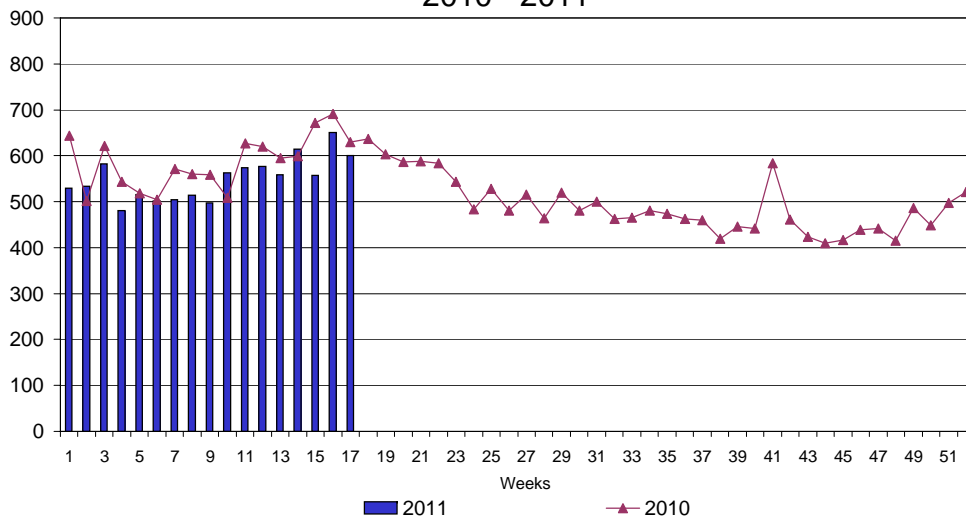
### UI Claims Comparison Year to Date



### UI Initial Claims 2009 - 2011



### UI Exhaustions 2010 - 2011



### TDI Claims Comparison Year to Date

