



Rhode Island Department of Labor and Training

Weekly Update of Claims Activity

Week Ending: April 30, 2011

Unemployment Insurance

Initial Claims – 1,407 initial claims were processed during the week ending 4/30/11, a decrease of 1,614 from the previous week, and a decrease of 671 from a year ago. The number of initial claims filed to date is down 8.3 percent below last year and down 37.4 percent from two years ago.

Continued Claims – 17,127 continued claims were processed during the week of 4/30/11, an increase of 903 from the previous week and a decrease of 2,156 from a year ago. The number of continued claims filed to date is down 8.1 percent from a year ago and down 34.6 percent from two years ago.

Workshare – gives employers an alternative to layoffs by allowing employees to work reduced hours and collect a percentage of regular UI benefits to compensate for lost pay. This week, 39 initial claims and 1,438 continued claims were processed. An estimated 10 layoffs were prevented this week, as a result of Workshare.

Emergency Unemployment Compensation 08 – EUC08, which became effective July 6, 2008, provides up to 53 weeks of federally funded benefits to eligible individuals who exhausted their UI claims. This week there were 563 new EUC08 claims processed and 13,998 continued claims processed (6,323 under tier I, 3,899 under tier II, 2,596 under tier III and 1,180 under tier IV).

Extended Benefits – are payable to individuals who have exhausted UI or EUC08 claims. This week, 64 new EB claims and 2,249 continued EB claims were processed.

Exhaustions – 587 individuals exhausted their regular payments this week, a decrease of 13 from the previous week and a decrease of 49 from a year ago. There were 179 individuals that exhausted EUC08 and 399 individuals that exhausted EB.

Temporary Disability Insurance

Temporary Disability Insurance – 906 initial claims and 7,015 continued claims were processed for Temporary Disability Insurance. The average weekly TDI payment is \$443 per week. Rhode Island is currently paying an average of 10.8 weeks per new claim.

| | Initial Claims | | | Continued Claims | TOTAL - Initial and Continued Claims | | | |
|------------------------------|----------------|-------|------------|------------------|--------------------------------------|---------------|----------|---------------|
| | Total | New | Additional | | Current Week | Previous Week | Year Ago | Two Years Ago |
| Total - All programs* | 2,358 | 1,427 | 931 | 35,335 | 37,693 | 38,277 | 44,592 | 46,289 |
| UI Claims | 1,407 | 746 | 661 | 17,127 | 18,534 | 19,245 | 21,361 | 25,997 |
| Change from: | | | | | | | | |
| Previous Week | -1,614 | -318 | -1,296 | 903 | -711 | | | |
| Year Ago | -671 | -294 | -377 | -2,156 | -2,827 | | | |
| Two Years Ago | -367 | -197 | -170 | -7,096 | -7,463 | | | |
| EUC08 Claims | 778 | 563 | 215 | 13,998 | 14,776 | 14,643 | 18,345 | 10,197 |
| Extended Benefits | 89 | 64 | 25 | 2,249 | 2,338 | 2,536 | 1,032 | 2,161 |
| Interstate-Liable | 45 | 24 | 21 | 523 | 568 | 597 | 525 | 980 |
| Workshare | 39 | 30 | 9 | 1,438 | 1,477 | 1,256 | 3,329 | 6,954 |
| Workshare Equivalency | 10 | 7 | 3 | 371 | 381 | 291 | 743 | 1,869 |
| UI Exhaustions | - | - | - | 587 | 587 | 600 | 636 | 723 |
| EUC08 Exhaustions | - | - | - | 179 | 179 | 170 | 432 | 250 |
| EB Exhaustions | - | - | - | 399 | 399 | 210 | 20 | 57 |
| TDI Claims | 906 | 752 | 154 | 7,015 | 7,921 | 7,783 | 8,443 | 8,591 |
| Change from: | | | | | | | | |
| Previous Week | 221 | 194 | 27 | -83 | 138 | | | |
| Year Ago | 115 | 108 | 7 | -637 | -522 | | | |

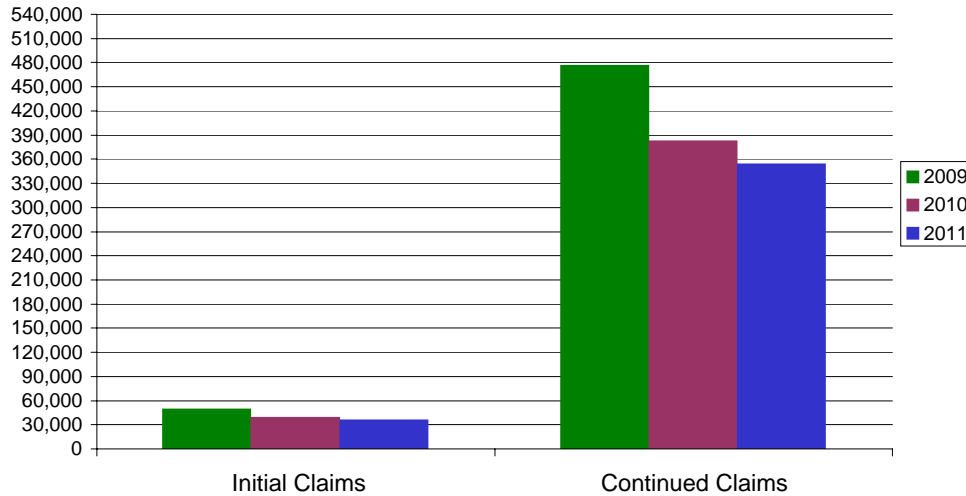
* Includes UI, EUC08, EB, Workshare & Interstate Liable.

Equal Opportunity Employer / Program / Auxiliary aids and services available upon request to individuals with disabilities / TTY via RI Relay 711.

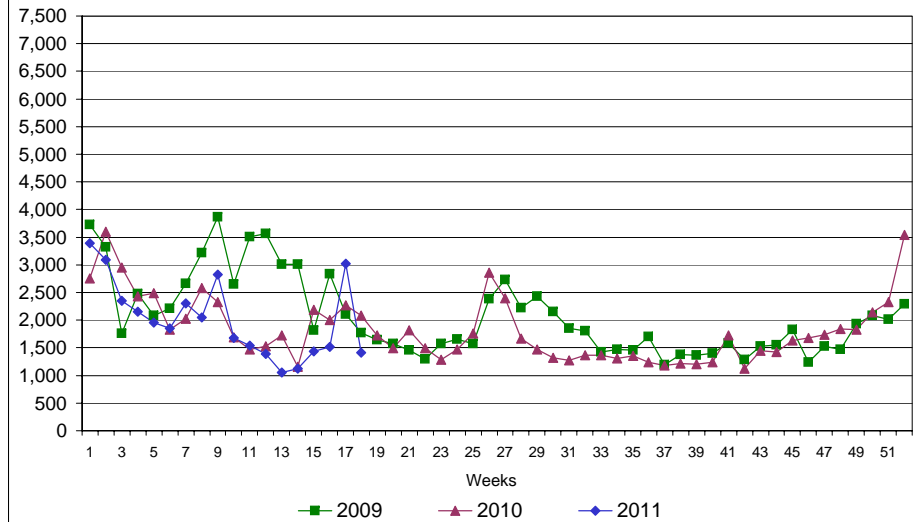
Rhode Island Department of Labor and Training

April 30, 2011

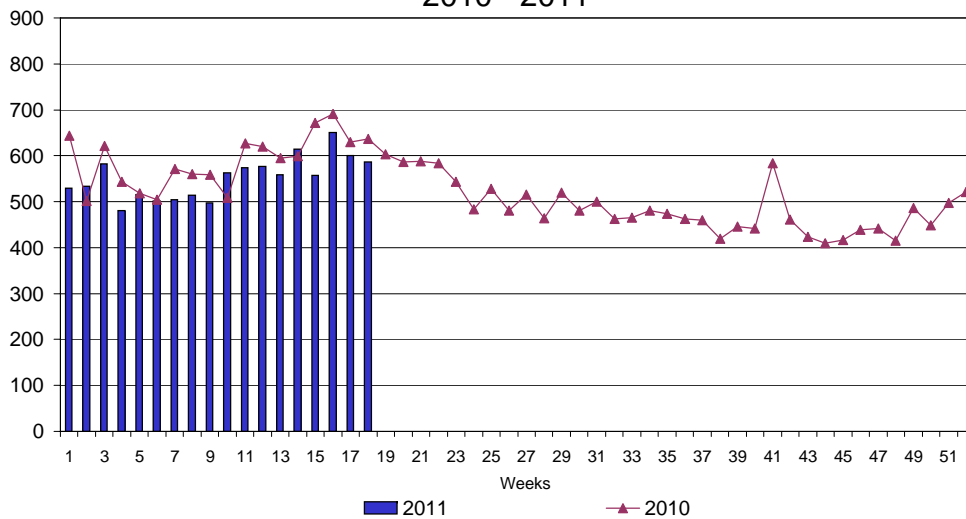
UI Claims Comparison Year to Date



UI Initial Claims 2009 - 2011



UI Exhaustions 2010 - 2011



TDI Claims Comparison Year to Date

