



Rhode Island Department of Labor and Training

Weekly Update of Claims Activity

Week Ending: May 7, 2011

Unemployment Insurance

Initial Claims – 1,236 initial claims were processed during the week ending 5/7/11, a decrease of 171 from the previous week, and a decrease of 483 from a year ago. The number of initial claims filed to date is down 9.3 percent below last year and down 37.2 percent from two years ago.

Continued Claims – 14,888 continued claims were processed during the week of 5/7/11, a decrease of 2,239 from the previous week and a decrease of 3,318 from a year ago. The number of continued claims filed to date is down 8.6 percent from a year ago and down 35.4 percent from two years ago.

Workshare – gives employers an alternative to layoffs by allowing employees to work reduced hours and collect a percentage of regular UI benefits to compensate for lost pay. This week, 36 initial claims and 1,193 continued claims were processed. An estimated 9 layoffs were prevented this week, as a result of Workshare.

Emergency Unemployment Compensation 08 – EUC08, which became effective July 6, 2008, provides up to 53 weeks of federally funded benefits to eligible individuals who exhausted their UI claims. This week there were 515 new EUC08 claims processed and 14,044 continued claims processed (6,341 under tier I, 3,806 under tier II, 2,700 under tier III and 1,197 under tier IV).

Extended Benefits – are payable to individuals who have exhausted UI or EUC08 claims. This week, 119 new EB claims and 1,911 continued EB claims were processed.

Exhaustions – 544 individuals exhausted their regular payments this week, a decrease of 43 from the previous week and a decrease of 59 from a year ago. There were 209 individuals that exhausted EUC08 and 396 individuals that exhausted EB.

Temporary Disability Insurance

Temporary Disability Insurance – 788 initial claims and 6,765 continued claims were processed for Temporary Disability Insurance. The average weekly TDI payment is \$447 per week. Rhode Island is currently paying an average of 10.8 weeks per new claim.

	Initial Claims			Continued Claims	TOTAL - Initial and Continued Claims			
	Total	New	Additional		Current Week	Previous Week	Year Ago	Two Years Ago
Total - All programs*	2,146	1,417	729	32,546	34,692	37,693	42,213	42,520
UI Claims	1,236	743	493	14,888	16,124	18,534	19,925	24,382
Change from:								
Previous Week	-171	-3	-168	-2,239	-2,410			
Year Ago	-483	-135	-348	-3,318	-3,801			
Two Years Ago	-403	-245	-158	-7,855	-8,258			
EUC08 Claims	705	515	190	14,044	14,749	14,776	18,347	10,295
Extended Benefits	139	119	20	1,911	2,050	2,338	1,281	2,222
Interstate-Liable	30	13	17	510	540	568	585	895
Workshare	36	27	9	1,193	1,229	1,477	2,075	4,726
Workshare Equivalency	9	6	3	284	293	381	503	1,251
UI Exhaustions	-	-	-	544	544	587	603	775
EUC08 Exhaustions	-	-	-	209	209	179	377	222
EB Exhaustions	-	-	-	396	396	399	24	64
TDI Claims	788	640	148	6,765	7,553	7,921	8,439	8,088
Change from:								
Previous Week	-118	-112	-6	-250	-368			
Year Ago	46	39	7	-932	-886			

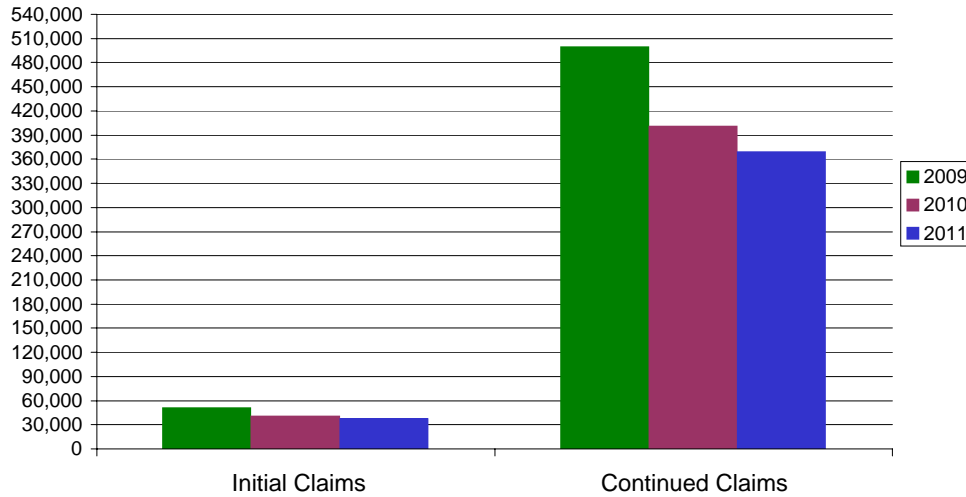
* Includes UI, EUC08, EB, Workshare & Interstate Liable.

Equal Opportunity Employer / Program / Auxiliary aids and services available upon request to individuals with disabilities / TTY via RI Relay 711.

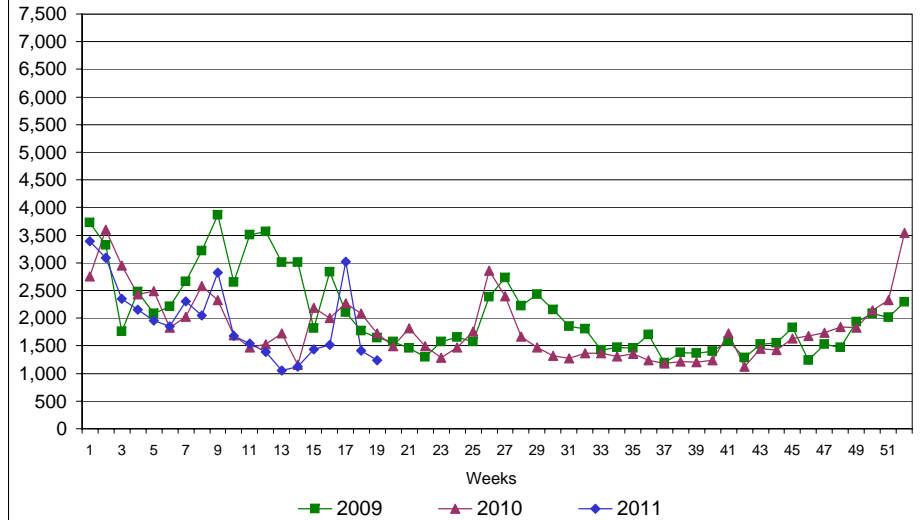
Rhode Island Department of Labor and Training

May 7, 2011

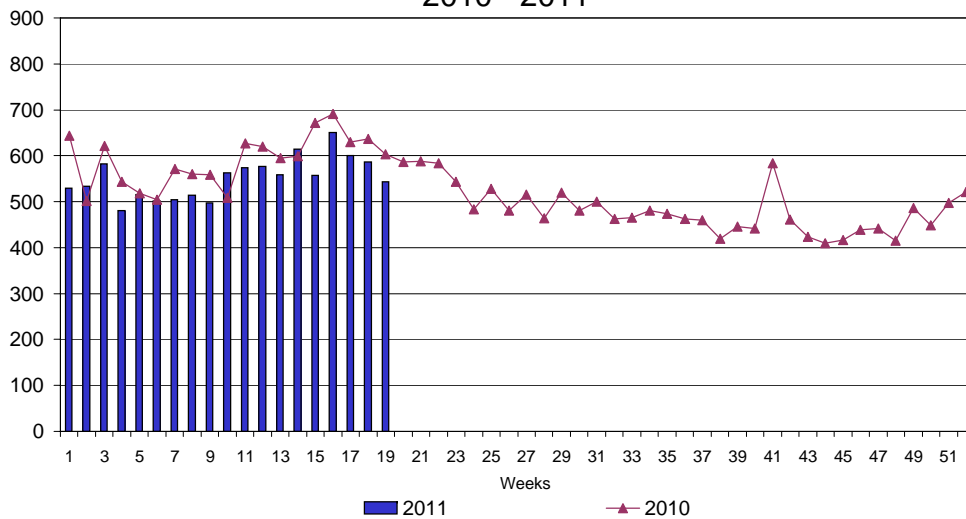
UI Claims Comparison Year to Date



UI Initial Claims 2009 - 2011



UI Exhaustions 2010 - 2011



TDI Claims Comparison Year to Date

