



Rhode Island Department of Labor and Training

Weekly Update of Claims Activity

Week Ending: May 14, 2011

Unemployment Insurance

Initial Claims – 1,332 initial claims were processed during the week ending 5/14/11, an increase of 96 from the previous week, and a decrease of 159 from a year ago. The number of initial claims filed to date is down 9.4 percent below last year and down 36.6 percent from two years ago.

Continued Claims – 13,984 continued claims were processed during the week of 5/14/11, a decrease of 904 from the previous week and a decrease of 3,132 from a year ago. The number of continued claims filed to date is down 9.1 percent from a year ago and down 36.2 percent from two years ago.

Workshare – gives employers an alternative to layoffs by allowing employees to work reduced hours and collect a percentage of regular UI benefits to compensate for lost pay. This week, 65 initial claims and 1,327 continued claims were processed. An estimated 19 layoffs were prevented this week, as a result of Workshare.

Emergency Unemployment Compensation 08 – EUC08, which became effective July 6, 2008, provides up to 53 weeks of federally funded benefits to eligible individuals who exhausted their UI claims. This week there were 551 new EUC08 claims processed and 14,273 continued claims processed (6,497 under tier I, 3,757 under tier II, 2,790 under tier III and 1,229 under tier IV).

Extended Benefits – are payable to individuals who have exhausted UI or EUC08 claims. This week, 105 new EB claims and 1,616 continued EB claims were processed.

Exhaustions – 551 individuals exhausted their regular payments this week, an increase of 7 from the previous week and a decrease of 35 from a year ago. There were 206 individuals that exhausted EUC08 and 149 individuals that exhausted EB.

Temporary Disability Insurance

Temporary Disability Insurance – 688 initial claims and 7,071 continued claims were processed for Temporary Disability Insurance. The average weekly TDI payment is \$442 per week. Rhode Island is currently paying an average of 10.8 weeks per new claim.

	Initial Claims			Continued Claims	TOTAL - Initial and Continued Claims			
	Total	New	Additional		Current Week	Previous Week	Year Ago	Two Years Ago
Total - All programs*	2,317	1,484	833	31,713	34,030	34,692	41,557	43,316
UI Claims	1,332	776	556	13,984	15,316	16,124	18,607	23,757
Change from:								
Previous Week	96	33	63	-904	-808			
Year Ago	-159	-127	-32	-3,132	-3,291			
Two Years Ago	-247	-106	-141	-8,194	-8,441			
EUC08 Claims	764	551	213	14,273	15,037	14,749	18,080	10,852
Extended Benefits	123	105	18	1,616	1,739	2,050	1,371	2,426
Interstate-Liable	33	17	16	513	546	540	566	847
Workshare	65	35	30	1,327	1,392	1,229	2,933	5,434
Workshare Equivalency	19	11	8	409	428	293	723	1,412
UI Exhaustions	-	-	-	551	551	544	586	815
EUC08 Exhaustions	-	-	-	206	206	209	336	219
EB Exhaustions	-	-	-	149	149	396	18	44
TDI Claims	688	556	132	7,071	7,759	7,553	8,626	8,650
Change from:								
Previous Week	-100	-84	-16	306	206			
Year Ago	-142	-122	-20	-725	-867			

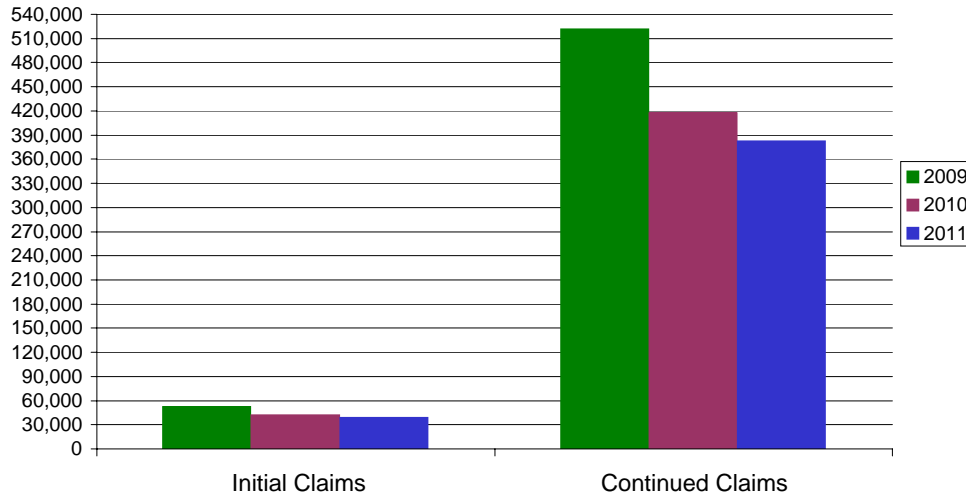
* Includes UI, EUC08, EB, Workshare & Interstate Liable.

Equal Opportunity Employer / Program / Auxiliary aids and services available upon request to individuals with disabilities / TTY via RI Relay 711.

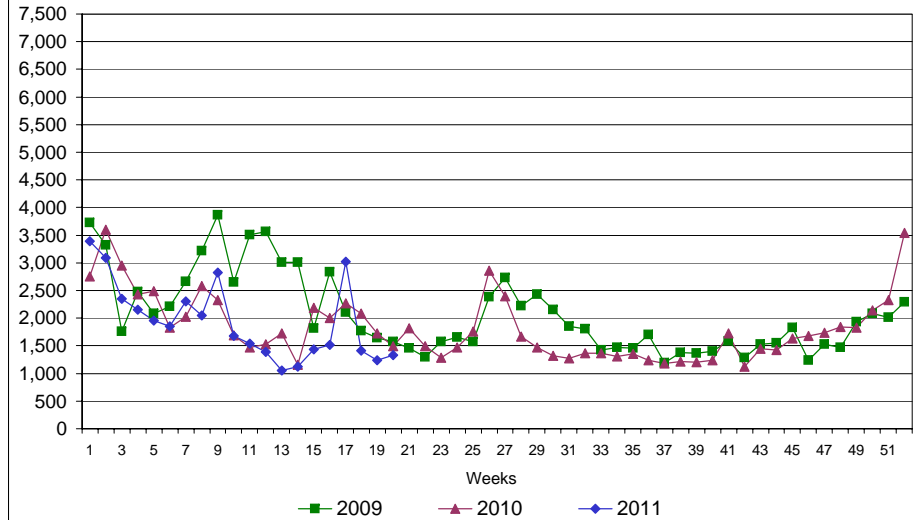
Rhode Island Department of Labor and Training

May 14, 2011

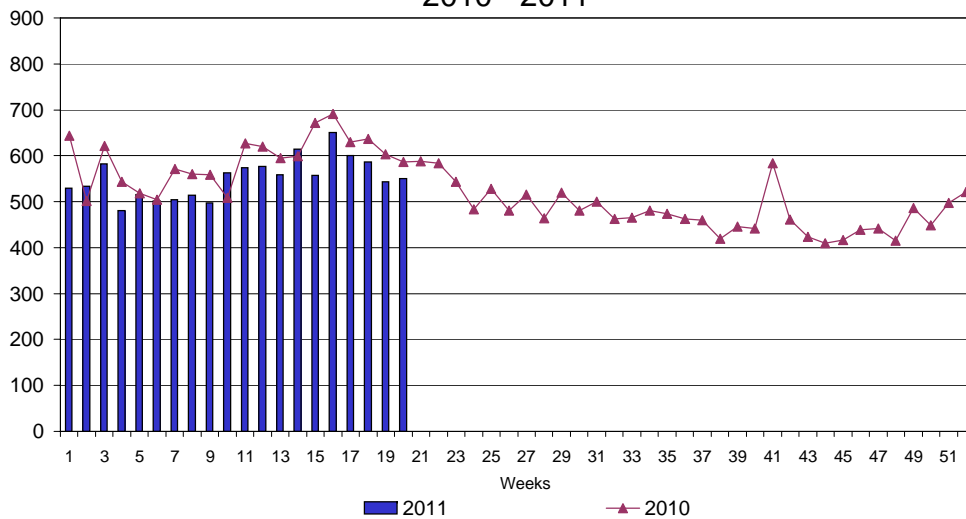
UI Claims Comparison Year to Date



UI Initial Claims 2009 - 2011



UI Exhaustions 2010 - 2011



TDI Claims Comparison Year to Date

