



Rhode Island Department of Labor and Training

Weekly Update of Claims Activity

Week Ending: May 21, 2011

Unemployment Insurance

Initial Claims – 1,348 initial claims were processed during the week ending 5/21/11, an increase of 16 from the previous week, and a decrease of 469 from a year ago. The number of initial claims filed to date is down 10.2 percent below last year and down 35.6 percent from two years ago.

Continued Claims – 13,793 continued claims were processed during the week of 5/21/11, a decrease of 191 from the previous week and a decrease of 2,956 from a year ago. The number of continued claims filed to date is down 9.6 percent from a year ago and down 36.9 percent from two years ago.

Workshare – gives employers an alternative to layoffs by allowing employees to work reduced hours and collect a percentage of regular UI benefits to compensate for lost pay. This week, 90 initial claims and 1,071 continued claims were processed. An estimated 19 layoffs were prevented this week, as a result of Workshare.

Emergency Unemployment Compensation 08 – EUC08, which became effective July 6, 2008, provides up to 53 weeks of federally funded benefits to eligible individuals who exhausted their UI claims. This week there were 493 new EUC08 claims processed and 14,305 continued claims processed (6,439 under tier I, 3,737 under tier II, 2,911 under tier III and 1,218 under tier IV).

Extended Benefits – are payable to individuals who have exhausted UI or EUC08 claims. This week, 133 new EB claims and 1,553 continued EB claims were processed.

Exhaustions – 543 individuals exhausted their regular payments this week, a decrease of 8 from the previous week and a decrease of 45 from a year ago. There were 242 individuals that exhausted EUC08 and 109 individuals that exhausted EB.

Temporary Disability Insurance

Temporary Disability Insurance – 829 initial claims and 8,167 continued claims were processed for Temporary Disability Insurance. The average weekly TDI payment is \$440 per week. Rhode Island is currently paying an average of 10.8 weeks per new claim.

	Initial Claims			Continued Claims	TOTAL - Initial and Continued Claims			
	Total	New	Additional		Current Week	Previous Week	Year Ago	Two Years Ago
Total - All programs*	2,335	1,478	857	31,207	33,542	34,030	41,478	42,804
UI Claims	1,348	755	593	13,793	15,141	15,316	18,566	22,835
Change from:								
Previous Week	16	-21	37	-191	-175			
Year Ago	-469	-333	-136	-2,956	-3,425			
Two Years Ago	-116	-106	-10	-7,578	-7,694			
EUC08 Claims	713	493	220	14,305	15,018	15,037	18,190	10,748
Extended Benefits	148	133	15	1,553	1,701	1,739	1,548	3,006
Interstate-Liable	36	17	19	485	521	546	517	861
Workshare	90	80	10	1,071	1,161	1,392	2,657	5,354
Workshare Equivalency	19	16	3	282	301	428	635	1,305
UI Exhaustions	-	-	-	543	543	551	588	765
EUC08 Exhaustions	-	-	-	242	242	206	369	198
EB Exhaustions	-	-	-	109	109	149	32	48
TDI Claims	829	670	159	8,167	8,996	7,759	8,389	7,996
Change from:								
Previous Week	141	114	27	1,096	1,237			
Year Ago	39	29	10	568	607			

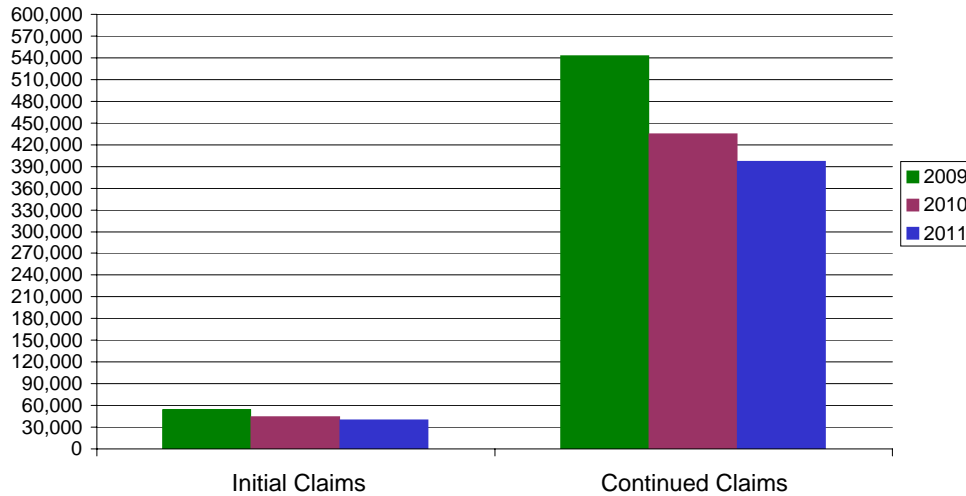
* Includes UI, EUC08, EB, Workshare & Interstate Liable.

Equal Opportunity Employer / Program / Auxiliary aids and services available upon request to individuals with disabilities / TTY via RI Relay 711.

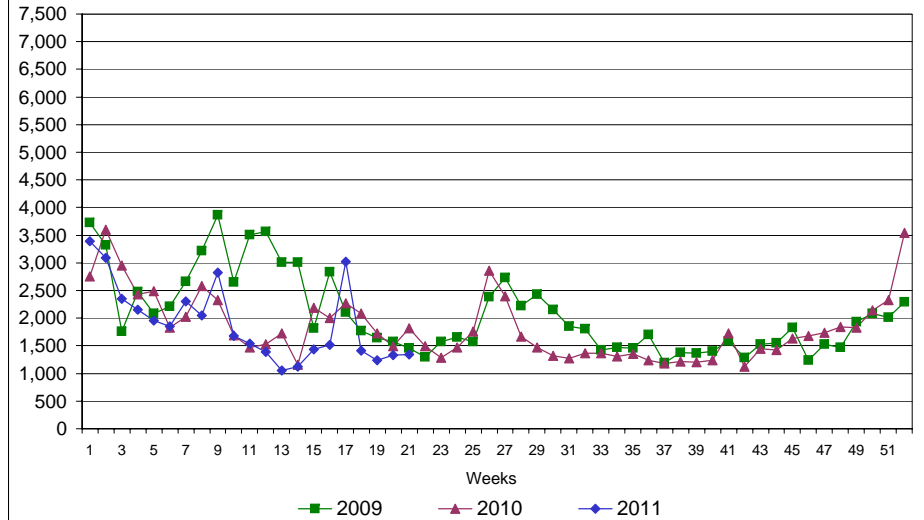
Rhode Island Department of Labor and Training

May 21, 2011

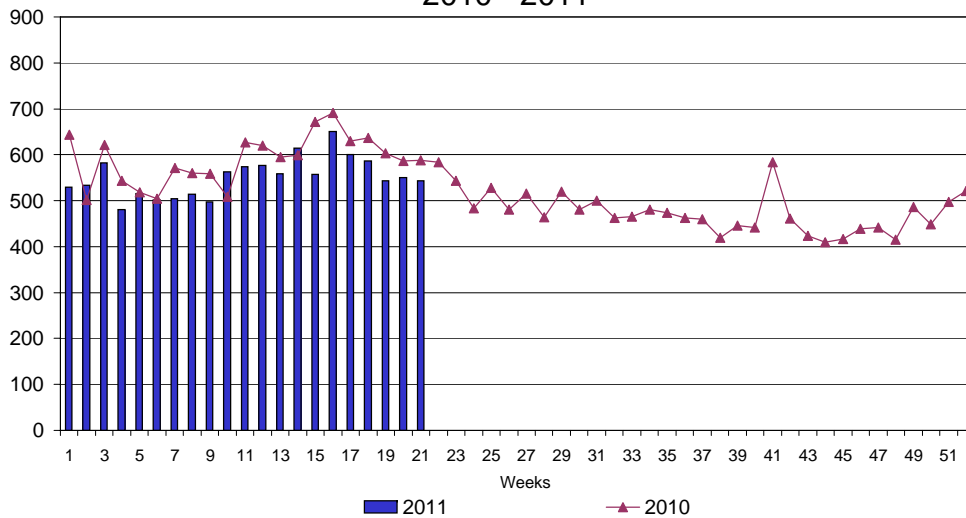
UI Claims Comparison Year to Date



UI Initial Claims 2009 - 2011



UI Exhaustions 2010 - 2011



TDI Claims Comparison Year to Date

