



## Rhode Island Department of Labor and Training

# *Weekly Update of Claims Activity*

**Week Ending: May 28, 2011**

### ***Unemployment Insurance***

**Initial Claims** – 1,315 initial claims were processed during the week ending 5/28/11, a decrease of 33 from the previous week, and a decrease of 182 from a year ago. The number of initial claims filed to date is down 10.4 percent below last year and down 34.4 percent from two years ago.

**Continued Claims** – 13,708 continued claims were processed during the week of 5/28/11, a decrease of 85 from the previous week and a decrease of 2,932 from a year ago. The number of continued claims filed to date is down 10.0 percent from a year ago and down 37.2 percent from two years ago.

**Workshare** – gives employers an alternative to layoffs by allowing employees to work reduced hours and collect a percentage of regular UI benefits to compensate for lost pay. This week, 51 initial claims and 1,581 continued claims were processed. An estimated 11 layoffs were prevented this week, as a result of Workshare.

**Emergency Unemployment Compensation 08** – EUC08, which became effective July 6, 2008, provides up to 53 weeks of federally funded benefits to eligible individuals who exhausted their UI claims. This week there were 461 new EUC08 claims processed and 14,244 continued claims processed (6,382 under tier I, 3,821 under tier II, 2,833 under tier III and 1,208 under tier IV).

**Extended Benefits** – are payable to individuals who have exhausted UI or EUC08 claims. This week, 114 new EB claims and 1,521 continued EB claims were processed.

**Exhaustions** – 528 individuals exhausted their regular payments this week, a decrease of 15 from the previous week and a decrease of 56 from a year ago. There were 228 individuals that exhausted EUC08 and 127 individuals that exhausted EB.

### ***Temporary Disability Insurance***

**Temporary Disability Insurance** – 749 initial claims and 7,127 continued claims were processed for Temporary Disability Insurance. The average weekly TDI payment is \$435 per week. Rhode Island is currently paying an average of 10.7 weeks per new claim.

	<b>Initial Claims</b>			<b>Continued Claims</b>	<b>TOTAL - Initial and Continued Claims</b>			
	<b>Total</b>	<b>New</b>	<b>Additional</b>		<b>Current Week</b>	<b>Previous Week</b>	<b>Year Ago</b>	<b>Two Years Ago</b>
<b>Total - All programs*</b>	2,183	1,410	773	31,527	33,710	33,542	41,788	40,720
<b>UI Claims</b>	1,315	768	547	13,708	15,023	15,141	18,137	21,353
Change from:								
Previous Week	-33	13	-46	-85	-118			
Year Ago	-182	-160	-22	-2,932	-3,114			
Two Years Ago	19	121	-102	-6,349	-6,330			
<b>EUC08 Claims</b>	659	461	198	14,244	14,903	15,018	18,315	10,593
<b>Extended Benefits</b>	128	114	14	1,521	1,649	1,701	1,812	3,418
<b>Interstate-Liable</b>	30	18	12	473	503	521	605	783
<b>Workshare</b>	51	49	2	1,581	1,632	1,161	2,919	4,573
<b>Workshare Equivalency</b>	11	11	0	413	424	301	692	1,178
<b>UI Exhaustions</b>	-	-	-	528	528	543	584	729
<b>EUC08 Exhaustions</b>	-	-	-	228	228	242	307	203
<b>EB Exhaustions</b>	-	-	-	127	127	109	16	84
<b>TDI Claims</b>	749	601	148	7,127	7,876	8,996	8,505	6,775
Change from:								
Previous Week	-80	-69	-11	-1,040	-1,120			
Year Ago	113	74	39	-742	-629			

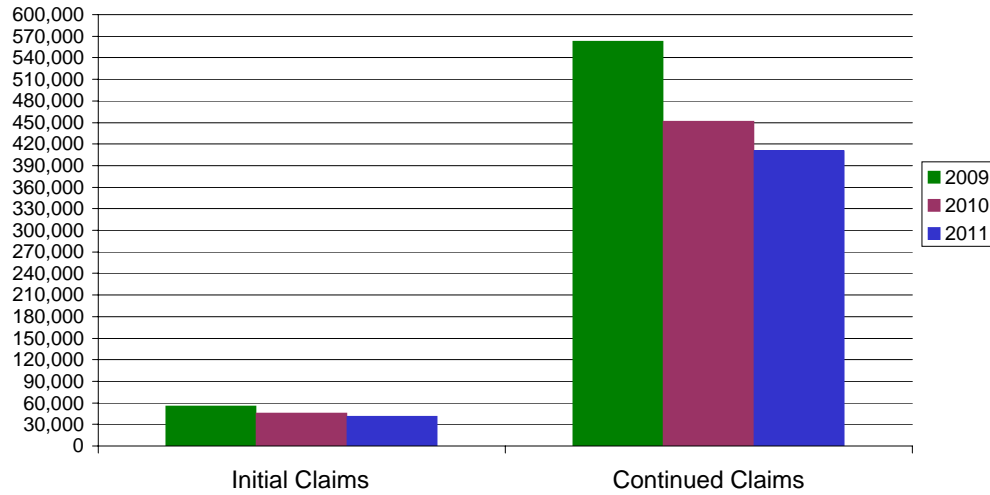
\* Includes UI, EUC08, EB, Workshare & Interstate Liable.

Equal Opportunity Employer / Program / Auxiliary aids and services available upon request to individuals with disabilities / TTY via RI Relay 711.

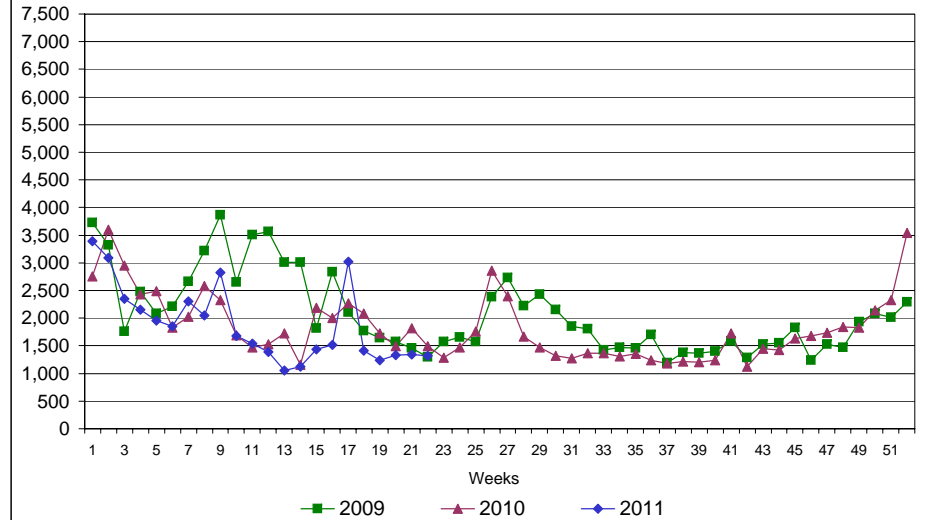
# Rhode Island Department of Labor and Training

## May 28, 2011

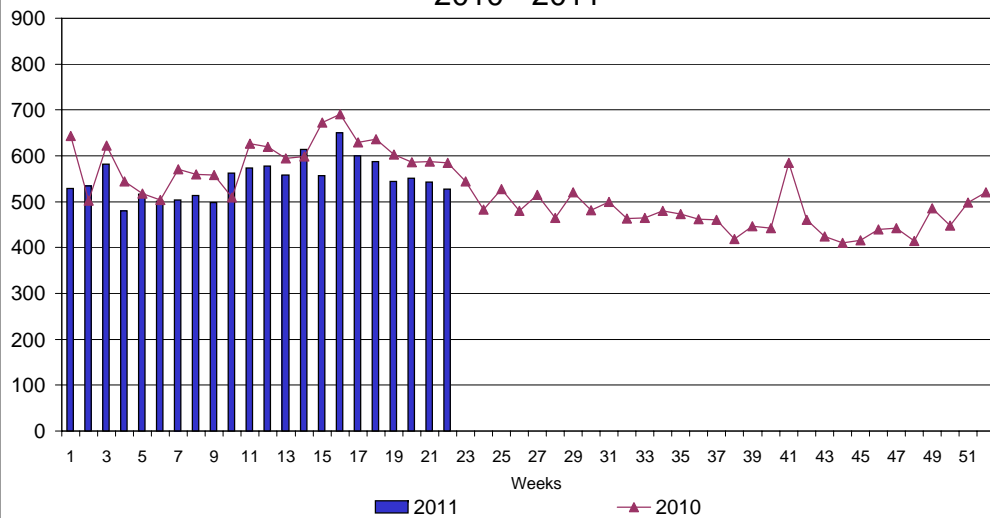
### UI Claims Comparison Year to Date



### UI Initial Claims 2009 - 2011



### UI Exhaustions 2010 - 2011



### TDI Claims Comparison Year to Date

