



Rhode Island Department of Labor and Training

Weekly Update of Claims Activity

Week Ending: June 4, 2011

Unemployment Insurance

Initial Claims – 991 initial claims were processed during the week ending 6/4/11, a decrease of 324 from the previous week, and a decrease of 291 from a year ago. The number of initial claims filed to date is down 10.8 percent below last year and down 35.0 percent from two years ago.

Continued Claims – 13,041 continued claims were processed during the week of 6/4/11, a decrease of 667 from the previous week and a decrease of 2,070 from a year ago. The number of continued claims filed to date is down 10.1 percent from a year ago and down 37.9 percent from two years ago.

Workshare – gives employers an alternative to layoffs by allowing employees to work reduced hours and collect a percentage of regular UI benefits to compensate for lost pay. This week, 26 initial claims and 1,050 continued claims were processed. An estimated 6 layoffs were prevented this week, as a result of Workshare.

Emergency Unemployment Compensation 08 – EUC08, which became effective July 6, 2008, provides up to 53 weeks of federally funded benefits to eligible individuals who exhausted their UI claims. This week there were 376 new EUC08 claims processed and 14,051 continued claims processed (6,280 under tier I, 3,797 under tier II, 2,855 under tier III and 1,119 under tier IV).

Extended Benefits – are payable to individuals who have exhausted UI or EUC08 claims. This week, 86 new EB claims and 1,481 continued EB claims were processed.

Exhaustions – 463 individuals exhausted their regular payments this week, a decrease of 65 from the previous week and a decrease of 81 from a year ago. There were 201 individuals that exhausted EUC08 and 98 individuals that exhausted EB.

Temporary Disability Insurance

Temporary Disability Insurance – 579 initial claims and 6,971 continued claims were processed for Temporary Disability Insurance. The average weekly TDI payment is \$435 per week. Rhode Island is currently paying an average of 10.8 weeks per new claim.

	Initial Claims			Continued Claims	TOTAL - Initial and Continued Claims			
	Total	New	Additional		Current Week	Previous Week	Year Ago	Two Years Ago
Total - All programs*	1,692	1,031	661	30,082	31,774	33,710	38,377	43,603
UI Claims	991	541	450	13,041	14,032	15,023	16,393	22,673
Change from:								
Previous Week	-324	-227	-97	-667	-991			
Year Ago	-291	-248	-43	-2,070	-2,361			
Two Years Ago	-588	-392	-196	-8,053	-8,641			
EUC08 Claims	543	376	167	14,051	14,594	14,903	17,336	11,203
Extended Benefits	99	86	13	1,481	1,580	1,649	2,380	3,935
Interstate-Liable	33	10	23	459	492	503	497	867
Workshare	26	18	8	1,050	1,076	1,632	1,771	4,925
Workshare Equivalency	6	3	3	307	313	424	461	1,203
UI Exhaustions	-	-	-	463	463	528	544	706
EUC08 Exhaustions	-	-	-	201	201	228	293	216
EB Exhaustions	-	-	-	98	98	127	33	88
TDI Claims	579	477	102	6,971	7,550	7,876	7,945	8,532
Change from:								
Previous Week	-170	-124	-46	-156	-326			
Year Ago	-186	-155	-31	-209	-395			

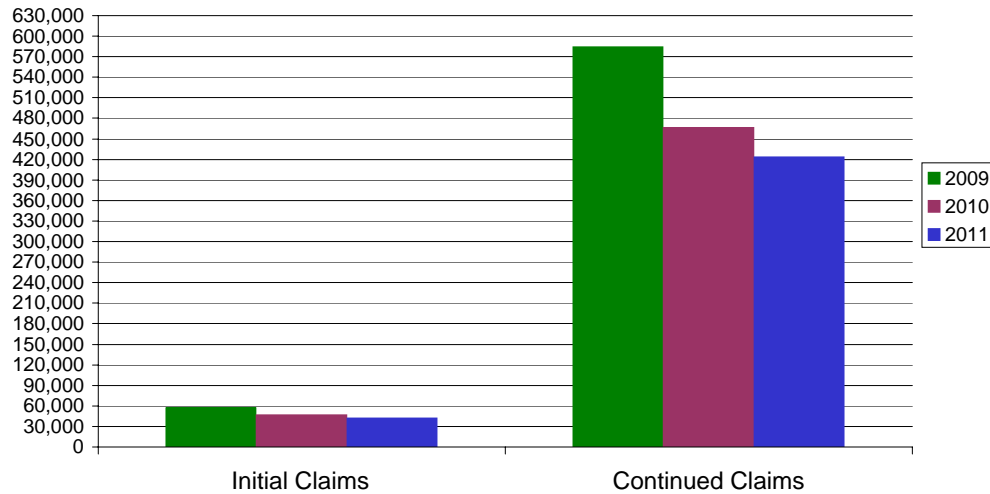
* Includes UI, EUC08, EB, Workshare & Interstate Liable.

Equal Opportunity Employer / Program / Auxiliary aids and services available upon request to individuals with disabilities / TTY via RI Relay 711.

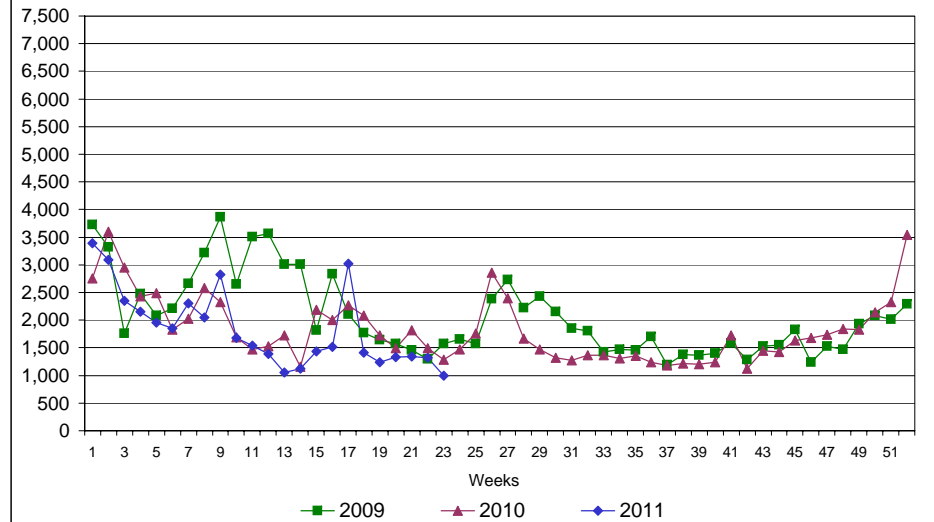
Rhode Island Department of Labor and Training

June 4, 2011

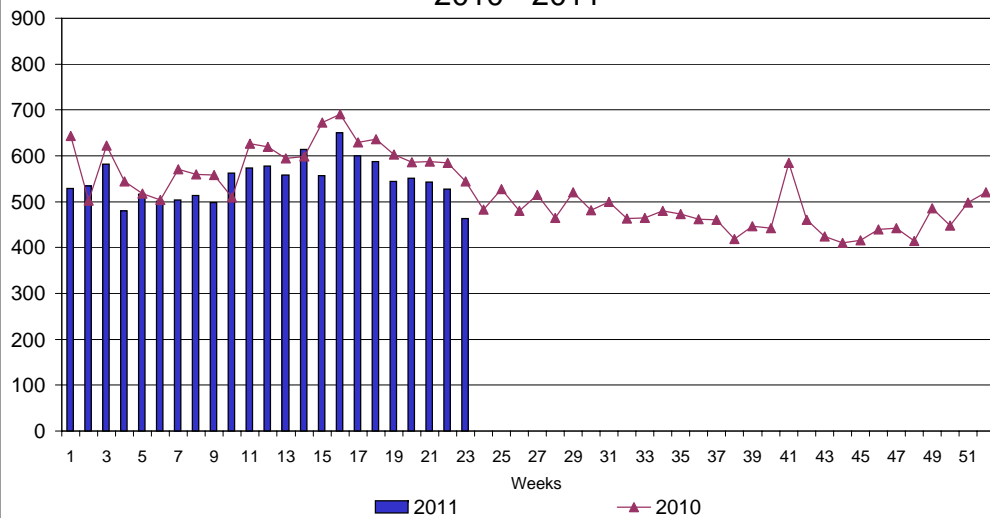
UI Claims Comparison Year to Date



UI Initial Claims 2009 - 2011



UI Exhaustions 2010 - 2011



TDI Claims Comparison Year to Date

