



Rhode Island Department of Labor and Training

Weekly Update of Claims Activity

Week Ending: June 25, 2011

Unemployment Insurance

Initial Claims – 2,090 initial claims were processed during the week ending 6/25/11, an increase of 621 from the previous week, and a decrease of 769 from a year ago. The number of initial claims filed to date is down 12.1 percent below last year and down 32.8 percent from two years ago.

Continued Claims – 13,080 continued claims were processed during the week of 6/25/11, an increase of 230 from the previous week and a decrease of 1,738 from a year ago. The number of continued claims filed to date is down 10.8 percent from a year ago and down 39.3 percent from two years ago.

Workshare – gives employers an alternative to layoffs by allowing employees to work reduced hours and collect a 89percentage of regular UI benefits to compensate for lost pay. This week, 25 initial claims and 1,349 continued claims were processed. An estimated 8 layoffs were prevented this week, as a result of Workshare.

Emergency Unemployment Compensation 08 – EUC08, which became effective July 6, 2008, provides up to 53 weeks of federally funded benefits to eligible individuals who exhausted their UI claims. This week there were 361 new EUC08 claims processed and 13,979 continued claims processed (6,060 under tier I, 3,871 under tier II, 2,962 under tier III and 1,086 under tier IV).

Extended Benefits – are payable to individuals who have exhausted UI or EUC08 claims. This week, 59 new EB claims and 1,405 continued EB claims were processed.

Exhaustions – 372 individuals exhausted their regular payments this week, a decrease of 51 from the previous week and a decrease of 108 from a year ago. There were 191 individuals that exhausted EUC08 and 57 individuals that exhausted EB.

Temporary Disability Insurance

Temporary Disability Insurance – 828 initial claims and 7,501 continued claims were processed for Temporary Disability Insurance. The average weekly TDI payment is \$429 per week. Rhode Island is currently paying an average of 10.7 weeks per new claim.

	Initial Claims			Continued Claims	TOTAL - Initial and Continued Claims			
	Total	New	Additional		Current Week	Previous Week	Year Ago	Two Years Ago
Total - All programs*	2,747	1,362	1,385	30,286	33,033	31,776	40,204	42,735
UI Claims	2,090	914	1,176	13,080	15,170	14,319	17,677	21,990
Change from:								
Previous Week	621	35	586	230	851			
Year Ago	-769	-454	-315	-1,738	-2,507			
Two Years Ago	-290	-375	85	-6,530	-6,820			
EUC08 Claims	539	361	178	13,979	14,518	14,568	14,227	11,514
Extended Benefits	72	59	13	1,405	1,477	1,498	5,603	3,476
Interstate-Liable	21	6	15	473	494	516	495	789
Workshare	25	22	3	1,349	1,374	875	2,202	4,966
Workshare Equivalency	8	8	0	401	409	215	570	1,207
UI Exhaustions	-	-	-	372	372	423	480	735
EUC08 Exhaustions	-	-	-	191	191	210	358	216
EB Exhaustions	-	-	-	57	57	53	36	78
TDI Claims	828	674	154	7,501	8,329	7,681	8,907	8,307
Change from:								
Previous Week	-68	-76	8	716	648			
Year Ago	-41	-40	-1	-537	-578			

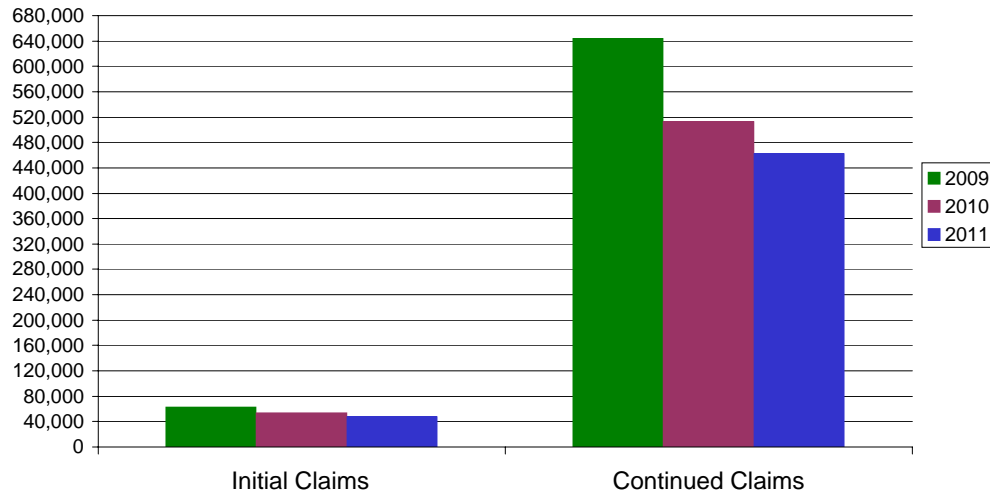
* Includes UI, EUC08, EB, Workshare & Interstate Liable.

Equal Opportunity Employer / Program / Auxiliary aids and services available upon request to individuals with disabilities / TTY via RI Relay 711.

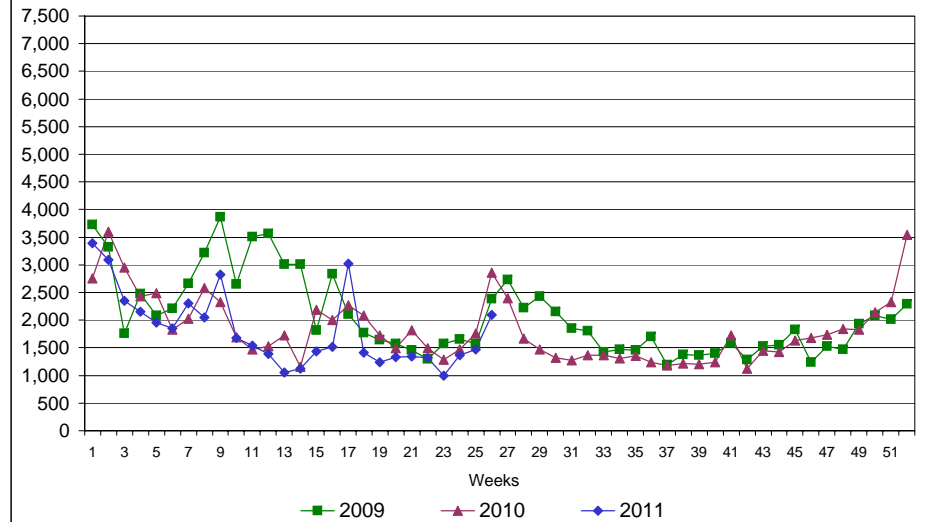
Rhode Island Department of Labor and Training

June 25, 2011

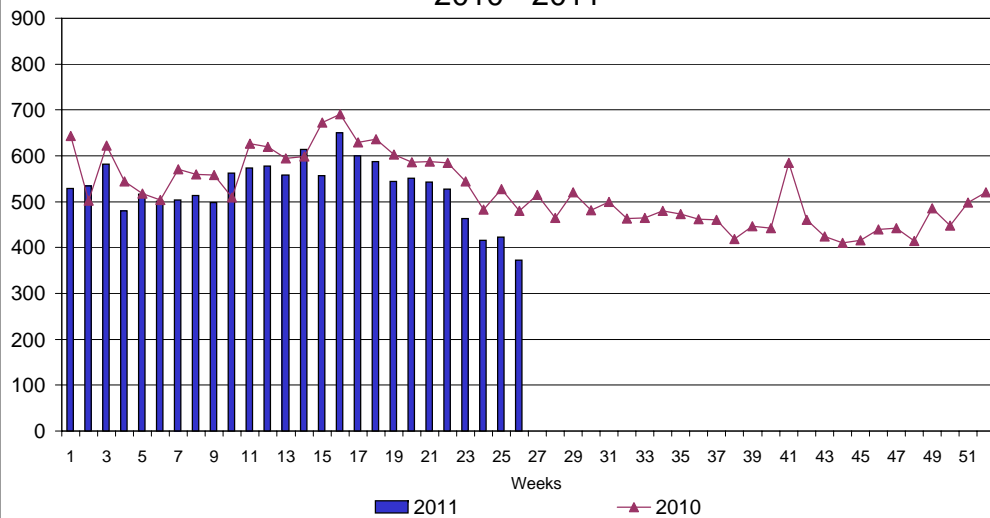
UI Claims Comparison Year to Date



UI Initial Claims 2009 - 2011



UI Exhaustions 2010 - 2011



TDI Claims Comparison Year to Date

