



Rhode Island Department of Labor and Training

Weekly Update of Claims Activity

Week Ending: July 2, 2011

Unemployment Insurance

Initial Claims – 3,058 initial claims were processed during the week ending 7/2/11, an increase of 968 from the previous week, and an increase of 667 from a year ago. The number of initial claims filed to date is down 10.1 percent below last year and down 30.2 percent from two years ago.

Continued Claims – 13,466 continued claims were processed during the week of 7/2/11, an increase of 386 from the previous week and a decrease of 3,345 from a year ago. The number of continued claims filed to date is down 11.2 percent from a year ago and down 39.9 percent from two years ago.

Workshare – gives employers an alternative to layoffs by allowing employees to work reduced hours and collect a 89percentage of regular UI benefits to compensate for lost pay. This week, 19 initial claims and 743 continued claims were processed. An estimated 6 layoffs were prevented this week, as a result of Workshare.

Emergency Unemployment Compensation 08 – EUC08, which became effective July 6, 2008, provides up to 53 weeks of federally funded benefits to eligible individuals who exhausted their UI claims. This week there were 366 new EUC08 claims processed and 13,754 continued claims processed (5,874 under tier I, 3,721 under tier II, 3,142 under tier III and 1,017 under tier IV).

Extended Benefits – are payable to individuals who have exhausted UI or EUC08 claims. This week, 41 new EB claims and 1,413 continued EB claims were processed.

Exhaustions – 373 individuals exhausted their regular payments this week, an increase of 1 from the previous week and a decrease of 142 from a year ago. There were 186 individuals that exhausted EUC08 and 54 individuals that exhausted EB.

Temporary Disability Insurance

Temporary Disability Insurance – 727 initial claims and 7,305 continued claims were processed for Temporary Disability Insurance. The average weekly TDI payment is \$438 per week. Rhode Island is currently paying an average of 10.8 weeks per new claim.

	Initial Claims			Continued Claims	TOTAL - Initial and Continued Claims			
	Total	New	Additional		Current Week	Previous Week	Year Ago	Two Years Ago
Total - All programs*	3,699	2,030	1,669	29,818	33,517	33,033	41,505	45,165
UI Claims	3,058	1,587	1,471	13,466	16,524	15,170	19,202	24,441
Change from:								
Previous Week	968	673	295	386	1,354			
Year Ago	667	214	453	-3,345	-2,678			
Two Years Ago	326	119	207	-8,243	-7,917			
EUC08 Claims	539	366	173	13,754	14,293	14,518	12,832	11,763
Extended Benefits	48	41	7	1,413	1,461	1,477	6,964	3,747
Interstate-Liable	35	22	13	442	477	494	517	904
Workshare	19	14	5	743	762	1,374	1,990	4,310
Workshare Equivalency	6	4	2	200	206	409	459	1,064
UI Exhaustions	-	-	-	373	373	372	515	716
EUC08 Exhaustions	-	-	-	186	186	191	394	226
EB Exhaustions	-	-	-	54	54	57	40	87
TDI Claims	727	598	129	7,305	8,032	8,329	8,158	9,214
Change from:								
Previous Week	-101	-76	-25	-196	-297			
Year Ago	-55	-42	-13	-71	-126			

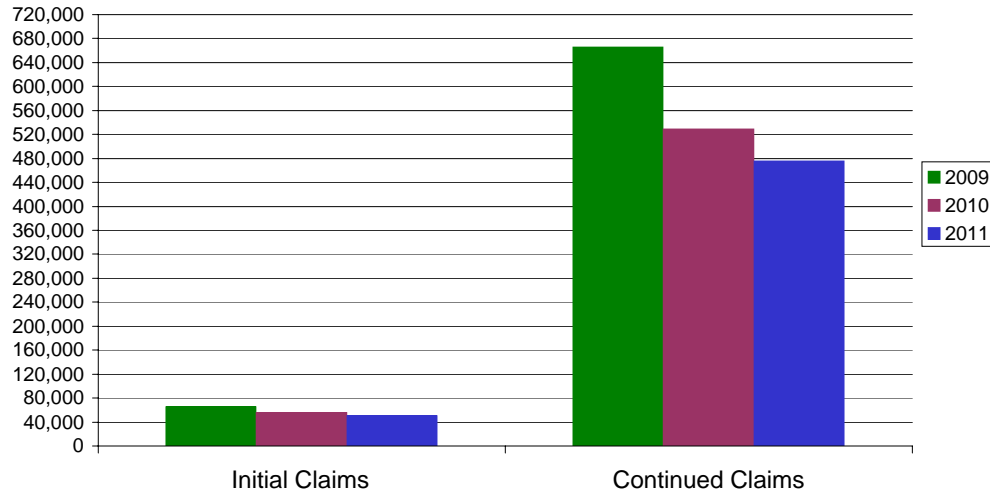
* Includes UI, EUC08, EB, Workshare & Interstate Liable.

Equal Opportunity Employer / Program / Auxiliary aids and services available upon request to individuals with disabilities / TTY via RI Relay 711.

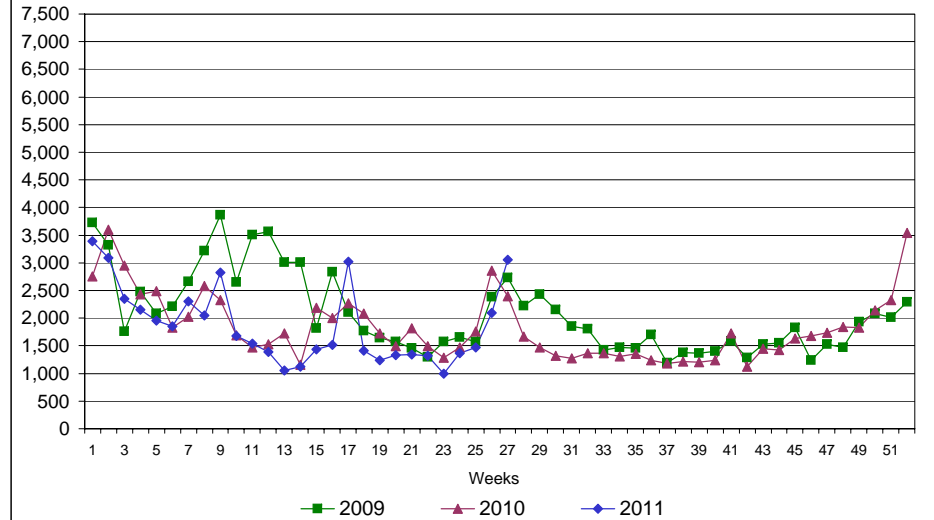
Rhode Island Department of Labor and Training

July 2, 2011

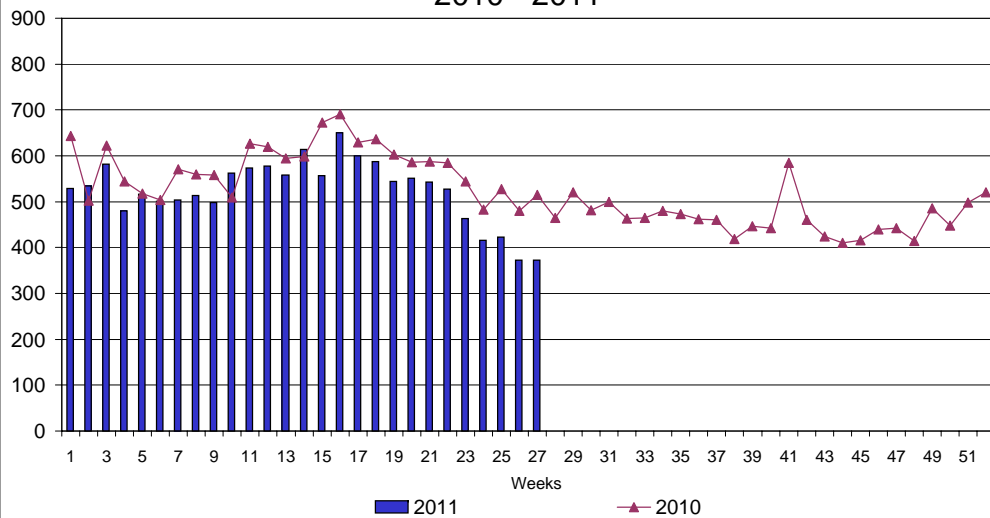
UI Claims Comparison Year to Date



UI Initial Claims 2009 - 2011



UI Exhaustions 2010 - 2011



TDI Claims Comparison Year to Date

