



Rhode Island Department of Labor and Training

Weekly Update of Claims Activity

Week Ending: July 9, 2011

Unemployment Insurance

Initial Claims – 1,930 initial claims were processed during the week ending 7/9/11, a decrease of 1,128 from the previous week, and an increase of 262 from a year ago. The number of initial claims filed to date is down 9.2 percent below last year and down 29.6 percent from two years ago.

Continued Claims – 14,923 continued claims were processed during the week of 7/9/11, an increase of 1,457 from the previous week and a decrease of 1,313 from a year ago. The number of continued claims filed to date is down 11.1 percent from a year ago and down 39.8 percent from two years ago.

Workshare – gives employers an alternative to layoffs by allowing employees to work reduced hours and collect a 89percentage of regular UI benefits to compensate for lost pay. This week, 19 initial claims and 865 continued claims were processed. An estimated 7 layoffs were prevented this week, as a result of Workshare.

Emergency Unemployment Compensation 08 – EUC08, which became effective July 6, 2008, provides up to 53 weeks of federally funded benefits to eligible individuals who exhausted their UI claims. This week there were 285 new EUC08 claims processed and 13,474 continued claims processed (5,746 under tier I, 3,607 under tier II, 3,081 under tier III and 1,040 under tier IV).

Extended Benefits – are payable to individuals who have exhausted UI or EUC08 claims. This week, 53 new EB claims and 1,366 continued EB claims were processed.

Exhaustions – 352 individuals exhausted their regular payments this week, a decrease of 21 from the previous week and a decrease of 112 from a year ago. There were 200 individuals that exhausted EUC08 and 45 individuals that exhausted EB.

Temporary Disability Insurance

Temporary Disability Insurance – 639 initial claims and 6,659 continued claims were processed for Temporary Disability Insurance. The average weekly TDI payment is \$437 per week. Rhode Island is currently paying an average of 10.7 weeks per new claim.

	Initial Claims			Continued Claims	TOTAL - Initial and Continued Claims			
	Total	New	Additional		Current Week	Previous Week	Year Ago	Two Years Ago
Total - All programs*	2,509	1,508	1,001	31,014	33,523	33,517	38,773	42,892
UI Claims	1,930	1,148	782	14,923	16,853	16,524	17,904	22,715
Change from:								
Previous Week	-1,128	-439	-689	1,457	329			
Year Ago	262	39	223	-1,313	-1,051			
Two Years Ago	-294	-73	-221	-5,568	-5,862			
EUC08 Claims	456	285	171	13,474	13,930	14,293	11,023	11,429
Extended Benefits	65	53	12	1,366	1,431	1,461	7,720	3,449
Interstate-Liable	39	22	17	386	425	477	495	727
Workshare	19	0	19	865	884	762	1,631	4,572
Workshare Equivalency	7	0	7	229	236	206	433	1,218
UI Exhaustions	-	-	-	352	352	373	464	639
EUC08 Exhaustions	-	-	-	200	200	186	387	282
EB Exhaustions	-	-	-	45	45	54	53	96
TDI Claims	639	531	108	6,659	7,298	8,032	8,039	6,913
Change from:								
Previous Week	-88	-67	-21	-646	-734			
Year Ago	-52	-46	-6	-689	-741			

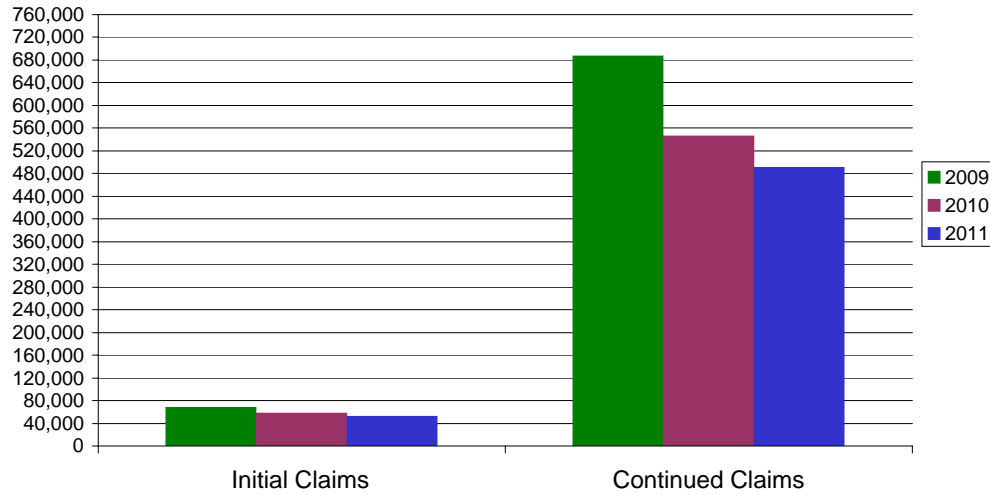
* Includes UI, EUC08, EB, Workshare & Interstate Liable.

Equal Opportunity Employer / Program / Auxiliary aids and services available upon request to individuals with disabilities / TTY via RI Relay 711.

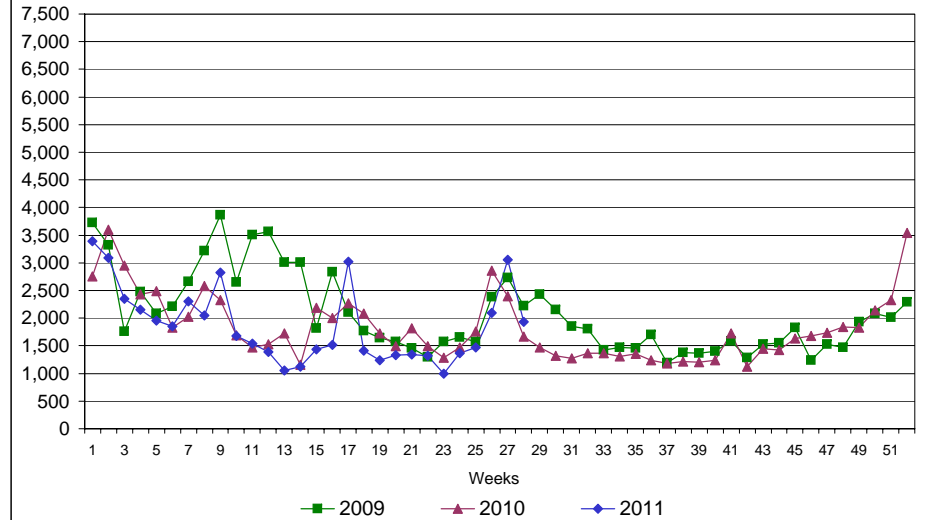
Rhode Island Department of Labor and Training

July 9, 2011

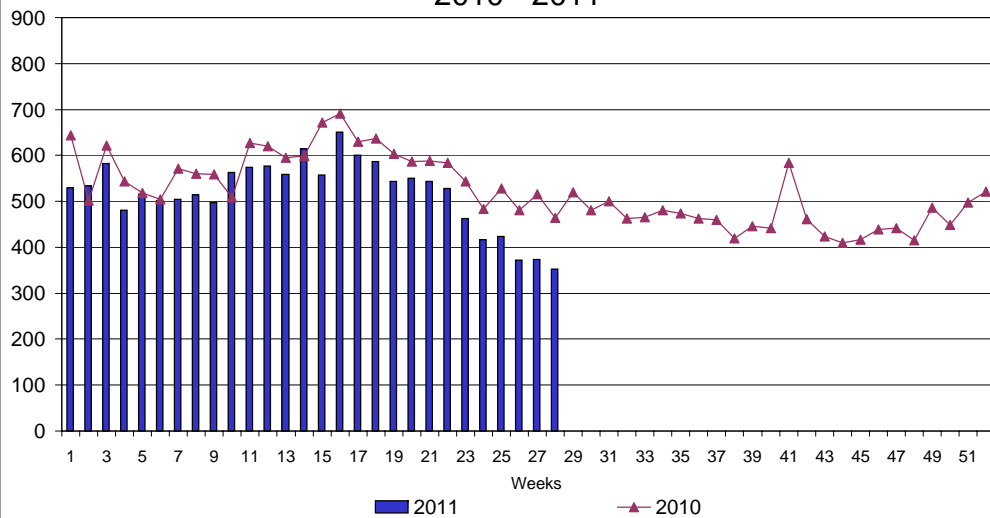
UI Claims Comparison Year to Date



UI Initial Claims 2009 - 2011



UI Exhaustions 2010 - 2011



TDI Claims Comparison Year to Date

