



Rhode Island Department of Labor and Training

Weekly Update of Claims Activity

Week Ending: July 16, 2011

Unemployment Insurance

Initial Claims – 1,822 initial claims were processed during the week ending 7/16/11, a decrease of 108 from the previous week, and an increase of 355 from a year ago. The number of initial claims filed to date is down 8.2 percent below last year and down 29.8 percent from two years ago.

Continued Claims – 16,164 continued claims were processed during the week of 7/16/11, an increase of 1,241 from the previous week and a decrease of 1,502 from a year ago. The number of continued claims filed to date is down 11.1 percent from a year ago and down 39.6 percent from two years ago.

Workshare – gives employers an alternative to layoffs by allowing employees to work reduced hours and collect a 89percentage of regular UI benefits to compensate for lost pay. This week, 22 initial claims and 892 continued claims were processed. An estimated 6 layoffs were prevented this week, as a result of Workshare.

Emergency Unemployment Compensation 08 – EUC08, which became effective July 6, 2008, provides up to 53 weeks of federally funded benefits to eligible individuals who exhausted their UI claims. This week there were 463 new EUC08 claims processed and 13,318 continued claims processed (5,589 under tier I, 3,558 under tier II, 3,081 under tier III and 1,090 under tier IV).

Extended Benefits – are payable to individuals who have exhausted UI or EUC08 claims. This week, 63 new EB claims and 1,375 continued EB claims were processed.

Exhaustions – 463 individuals exhausted their regular payments this week, an increase of 111 from the previous week and a decrease of 57 from a year ago. There were 192 individuals that exhausted EUC08 and 44 individuals that exhausted EB.

Temporary Disability Insurance

Temporary Disability Insurance – 734 initial claims and 7,844 continued claims were processed for Temporary Disability Insurance. The average weekly TDI payment is \$438 per week. Rhode Island is currently paying an average of 10.8 weeks per new claim.

	Initial Claims			Continued Claims	TOTAL - Initial and Continued Claims			
	Total	New	Additional		Current Week	Previous Week	Year Ago	Two Years Ago
Total - All programs*	2,614	1,700	914	32,167	34,781	33,523	40,037	43,537
UI Claims	1,822	1,141	681	16,164	17,986	16,853	19,133	23,782
Change from:								
Previous Week	-108	-7	-101	1,241	1,133			
Year Ago	355	182	173	-1,502	-1,147			
Two Years Ago	-605	-308	-297	-5,191	-5,796			
EUC08 Claims	664	463	201	13,318	13,982	13,930	9,533	11,867
Extended Benefits	68	63	5	1,375	1,443	1,431	9,117	3,531
Interstate-Liable	38	21	17	418	456	425	546	742
Workshare	22	12	10	892	914	884	1,708	3,615
Workshare Equivalency	6	3	3	289	295	236	537	1,068
UI Exhaustions	-	-	-	463	463	352	520	824
EUC08 Exhaustions	-	-	-	192	192	200	351	249
EB Exhaustions	-	-	-	44	44	45	53	411
TDI Claims	734	604	130	7,844	8,578	7,298	9,133	9,005
Change from:								
Previous Week	95	73	22	1,185	1,280			
Year Ago	-102	-93	-9	-453	-555			

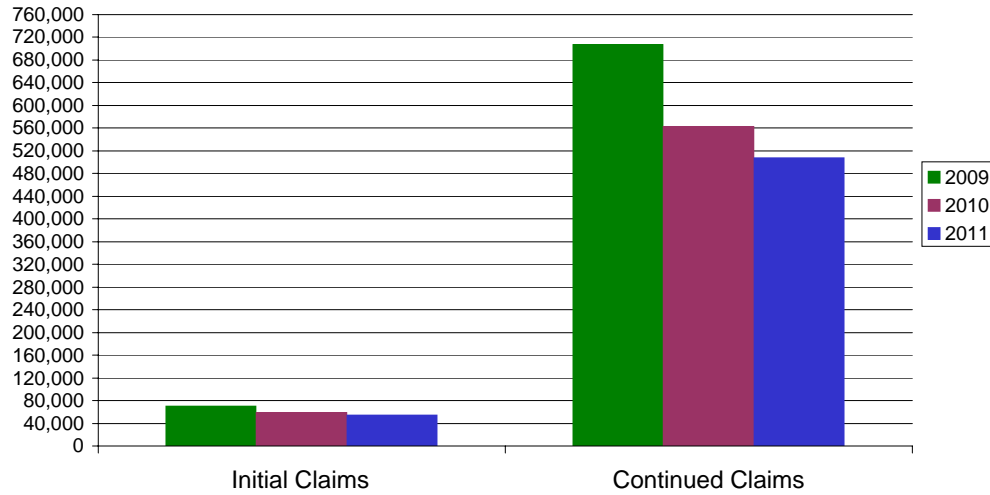
* Includes UI, EUC08, EB, Workshare & Interstate Liable.

Equal Opportunity Employer / Program / Auxiliary aids and services available upon request to individuals with disabilities / TTY via RI Relay 711.

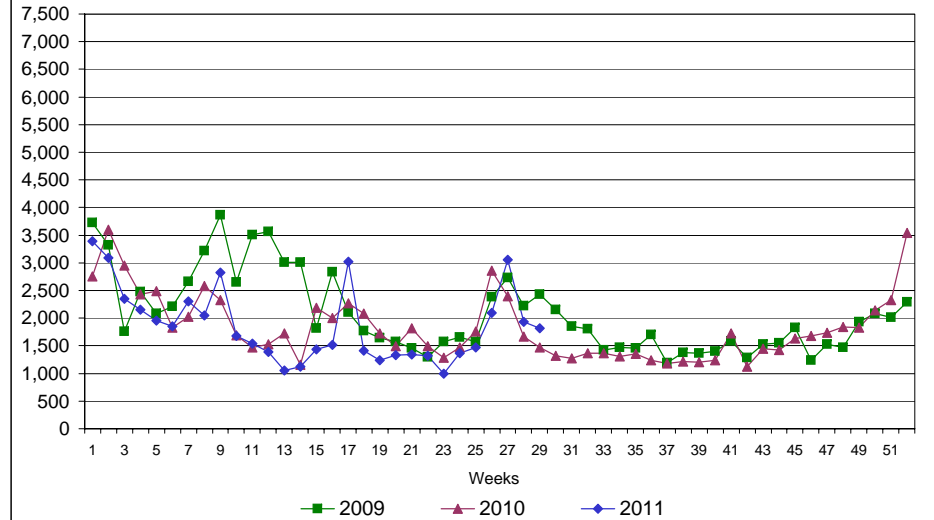
Rhode Island Department of Labor and Training

July 16, 2011

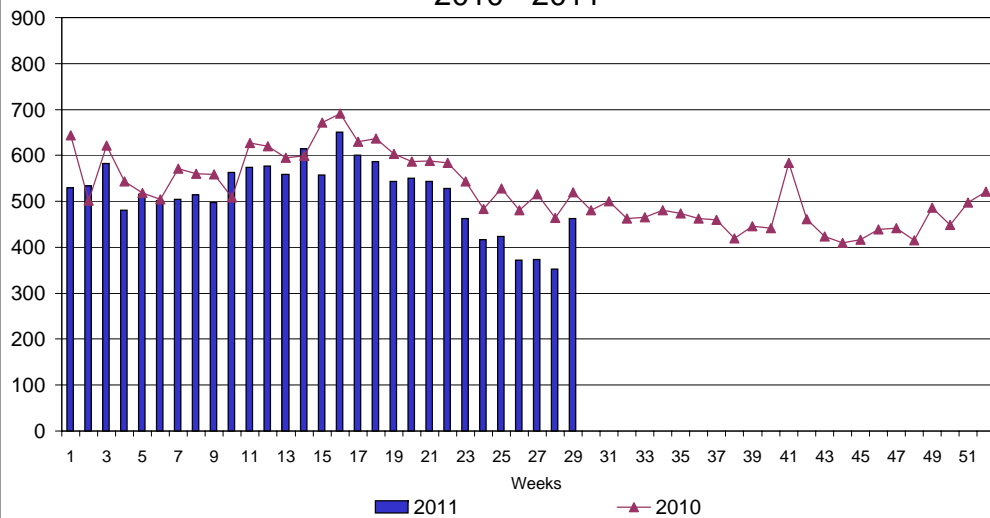
UI Claims Comparison Year to Date



UI Initial Claims 2009 - 2011



UI Exhaustions 2010 - 2011



TDI Claims Comparison Year to Date

