



Rhode Island Department of Labor and Training

Weekly Update of Claims Activity

Week Ending: July 23, 2011

Unemployment Insurance

Initial Claims – 1,340 initial claims were processed during the week ending 7/23/11, a decrease of 482 from the previous week, and an increase of 19 from a year ago. The number of initial claims filed to date is down 8.0 percent below last year and down 30.5 percent from two years ago.

Continued Claims – 16,051 continued claims were processed during the week of 7/23/11, a decrease of 113 from the previous week and a decrease of 1,574 from a year ago. The number of continued claims filed to date is down 11.0 percent from a year ago and down 39.6 percent from two years ago.

Workshare – gives employers an alternative to layoffs by allowing employees to work reduced hours and collect a percentage of regular UI benefits to compensate for lost pay. This week, 27 initial claims and 990 continued claims were processed. An estimated 7 layoffs were prevented this week, as a result of Workshare.

Emergency Unemployment Compensation 08 – EUC08, which became effective July 6, 2008, provides up to 53 weeks of federally funded benefits to eligible individuals who exhausted their UI claims. This week there were 435 new EUC08 claims processed and 13,377 continued claims processed (5,626 under tier I, 3,479 under tier II, 3,199 under tier III and 1,073 under tier IV).

Extended Benefits – are payable to individuals who have exhausted UI or EUC08 claims. This week, 51 new EB claims and 1,372 continued EB claims were processed.

Exhaustions – 467 individuals exhausted their regular payments this week, an increase of 4 from the previous week and a decrease of 14 from a year ago. There were 189 individuals that exhausted EUC08 and 44 individuals that exhausted EB.

Temporary Disability Insurance

Temporary Disability Insurance – 706 initial claims and 7,299 continued claims were processed for Temporary Disability Insurance. The average weekly TDI payment is \$434 per week. Rhode Island is currently paying an average of 10.8 weeks per new claim.

	Initial Claims			Continued Claims	TOTAL - Initial and Continued Claims			
	Total	New	Additional		Current Week	Previous Week	Year Ago	Two Years Ago
Total - All programs*	2,091	1,299	792	32,218	34,309	34,781	40,230	46,050
UI Claims	1,340	776	564	16,051	17,391	17,986	18,946	24,956
Change from:								
Previous Week	-482	-365	-117	-113	-595			
Year Ago	19	-107	126	-1,574	-1,555			
Two Years Ago	-818	-521	-297	-6,747	-7,565			
EUC08 Claims	616	435	181	13,377	13,993	13,982	8,592	12,142
Extended Benefits	67	51	16	1,372	1,439	1,443	9,510	3,285
Interstate-Liable	41	23	18	428	469	456	558	808
Workshare	27	14	13	990	1,017	914	2,624	4,859
Workshare Equivalency	7	4	3	281	288	295	832	1,277
UI Exhaustions	-	-	-	467	467	463	481	757
EUC08 Exhaustions	-	-	-	189	189	192	150	204
EB Exhaustions	-	-	-	44	44	44	36	179
TDI Claims	706	593	113	7,299	8,005	8,578	8,998	8,807
Change from:								
Previous Week	-28	-11	-17	-545	-573			
Year Ago	-141	-118	-23	-852	-993			

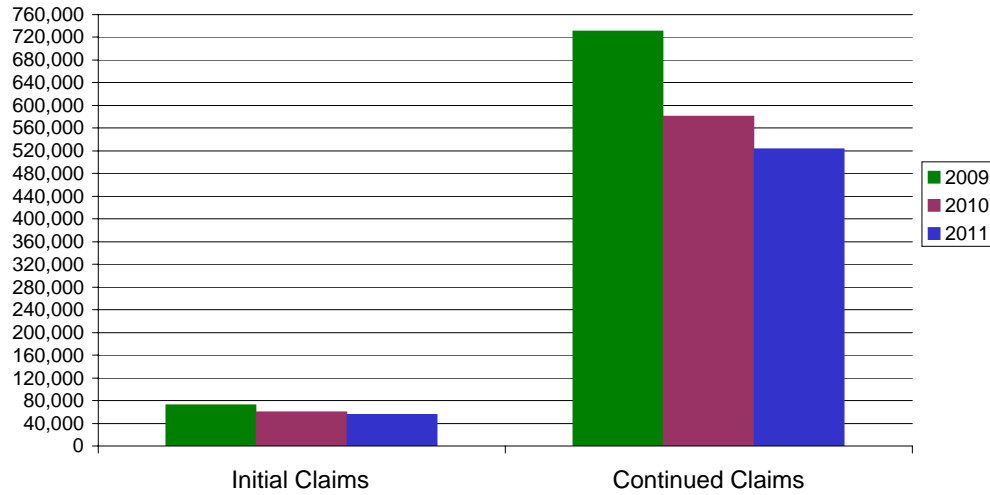
* Includes UI, EUC08, EB, Workshare & Interstate Liable.

Equal Opportunity Employer / Program / Auxiliary aids and services available upon request to individuals with disabilities / TTY via RI Relay 711.

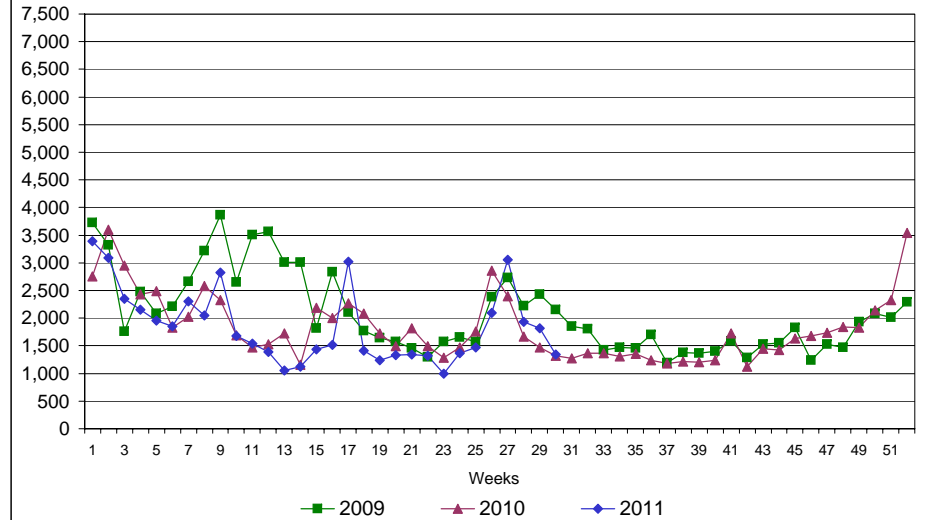
Rhode Island Department of Labor and Training

July 23, 2011

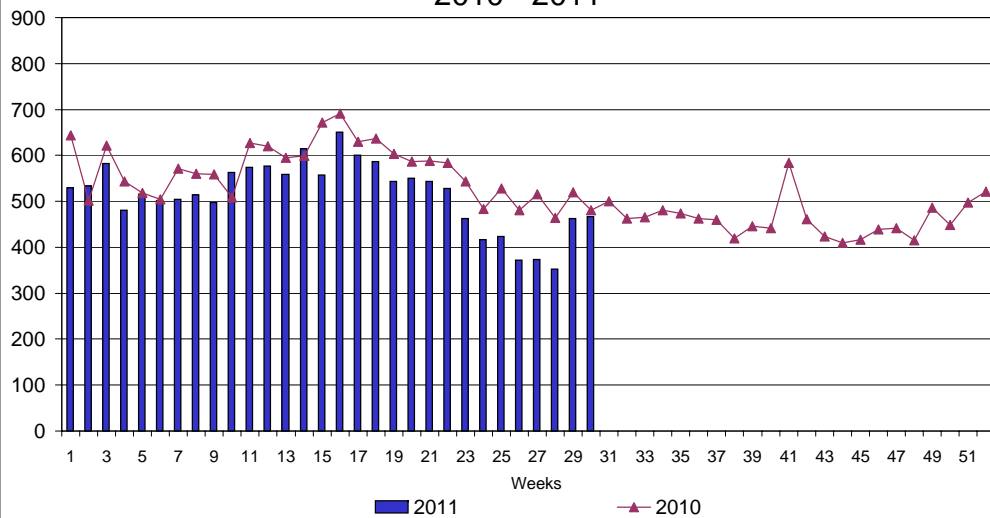
UI Claims Comparison Year to Date



UI Initial Claims 2009 - 2011



UI Exhaustions 2010 - 2011



TDI Claims Comparison Year to Date

