



## Rhode Island Department of Labor and Training

# *Weekly Update of Claims Activity*

*Week Ending: July 30, 2011*

### **Unemployment Insurance**

**Initial Claims** – 1,317 initial claims were processed during the week ending 7/30/11, a decrease of 23 from the previous week, and an increase of 41 from a year ago. The number of initial claims filed to date is down 7.7 percent below last year and down 30.7 percent from two years ago.

**Continued Claims** – 15,657 continued claims were processed during the week of 7/30/11, a decrease of 394 from the previous week and a decrease of 1,666 from a year ago. The number of continued claims filed to date is down 11.0 percent from a year ago and down 39.7 percent from two years ago.

**Workshare** – gives employers an alternative to layoffs by allowing employees to work reduced hours and collect a percentage of regular UI benefits to compensate for lost pay. This week, 10 initial claims and 801 continued claims were processed. An estimated 3 layoffs were prevented this week, as a result of Workshare.

**Emergency Unemployment Compensation 08** – EUC08, which became effective July 6, 2008, provides up to 53 weeks of federally funded benefits to eligible individuals who exhausted their UI claims. This week there were 420 new EUC08 claims processed and 13,282 continued claims processed (5,516 under tier I, 3,469 under tier II, 3,191 under tier III and 1,106 under tier IV).

**Extended Benefits** – are payable to individuals who have exhausted UI or EUC08 claims. This week, 73 new EB claims and 1,388 continued EB claims were processed.

**Exhaustions** – 444 individuals exhausted their regular payments this week, a decrease of 23 from the previous week and a decrease of 56 from a year ago. There were 182 individuals that exhausted EUC08 and 71 individuals that exhausted EB.

### **Temporary Disability Insurance**

**Temporary Disability Insurance** – 973 initial claims and 8,356 continued claims were processed for Temporary Disability Insurance. The average weekly TDI payment is \$438 per week. Rhode Island is currently paying an average of 10.8 weeks per new claim.

	Initial Claims			Continued Claims	TOTAL - Initial and Continued Claims			
	Total	New	Additional		Current Week	Previous Week	Year Ago	Two Years Ago
<b>Total - All programs*</b>	2,057	1,298	759	31,554	33,611	34,309	40,186	45,035
<b>UI Claims</b>	1,317	778	539	15,657	16,974	17,391	18,599	24,152
Change from:								
Previous Week	-23	2	-25	-394	-417			
Year Ago	41	-11	52	-1,666	-1,625			
Two Years Ago	-530	-315	-215	-6,648	-7,178			
<b>EUC08 Claims</b>	611	420	191	13,282	13,893	13,993	9,828	12,412
<b>Extended Benefits</b>	84	73	11	1,388	1,472	1,439	9,210	3,245
<b>Interstate-Liable</b>	35	19	16	426	461	469	553	731
<b>Workshare</b>	10	8	2	801	811	1,017	1,996	4,495
<b>Workshare Equivalency</b>	3	3	0	259	262	288	521	1,096
<b>UI Exhaustions</b>	-	-	-	444	444	467	500	758
<b>EUC08 Exhaustions</b>	-	-	-	182	182	189	92	263
<b>EB Exhaustions</b>	-	-	-	71	71	44	48	160
<b>TDI Claims</b>	973	817	156	8,356	9,329	8,005	8,892	8,778
Change from:								
Previous Week	267	224	43	1,057	1,324			
Year Ago	56	50	6	381	437			

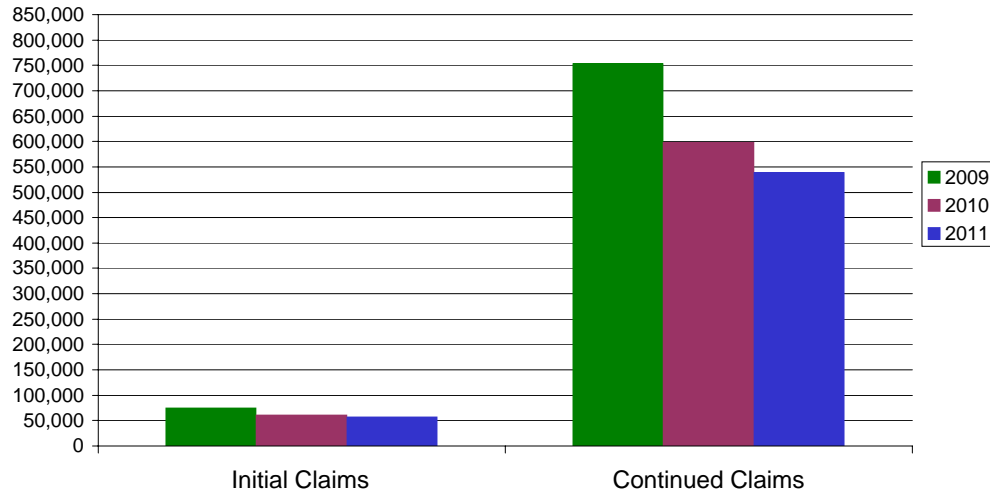
\* Includes UI, EUC08, EB, Workshare & Interstate Liable.

Equal Opportunity Employer / Program / Auxiliary aids and services available upon request to individuals with disabilities / TTY via RI Relay 711.

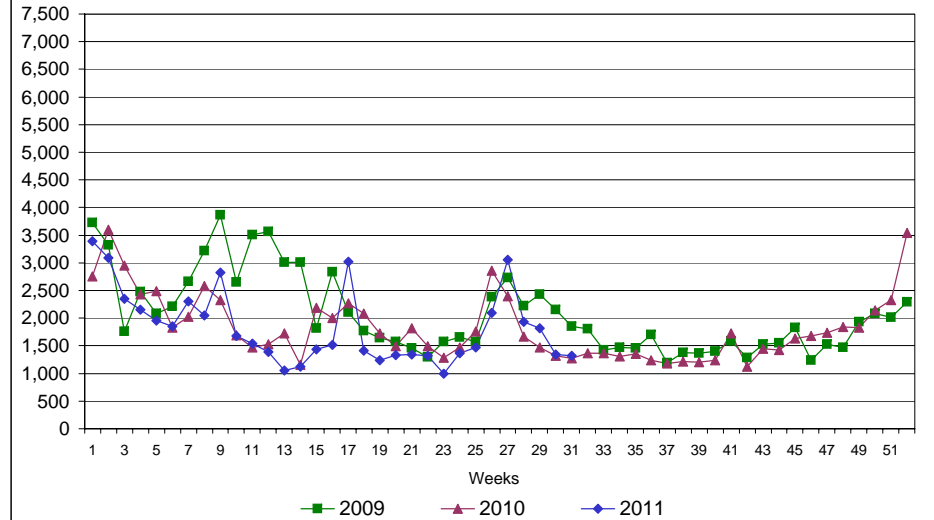
# Rhode Island Department of Labor and Training

## July 30, 2011

### UI Claims Comparison Year to Date



### UI Initial Claims 2009 - 2011



### UI Exhaustions 2010 - 2011



### TDI Claims Comparison Year to Date

