



Rhode Island Department of Labor and Training

Weekly Update of Claims Activity

Week Ending: August 6, 2011

Unemployment Insurance

Initial Claims – 1,254 initial claims were processed during the week ending 8/6/11, a decrease of 63 from the previous week, and a decrease of 110 from a year ago. The number of initial claims filed to date is down 7.8 percent below last year and down 31.0 percent from two years ago.

Continued Claims – 15,468 continued claims were processed during the week of 8/6/11, a decrease of 189 from the previous week and a decrease of 1,454 from a year ago. The number of continued claims filed to date is down 11.0 percent from a year ago and down 39.7 percent from two years ago.

Workshare – gives employers an alternative to layoffs by allowing employees to work reduced hours and collect a percentage of regular UI benefits to compensate for lost pay. This week, 40 initial claims and 795 continued claims were processed. An estimated 13 layoffs were prevented this week, as a result of Workshare.

Emergency Unemployment Compensation 08 – EUC08, which became effective July 6, 2008, provides up to 53 weeks of federally funded benefits to eligible individuals who exhausted their UI claims. This week there were 363 new EUC08 claims processed and 13,478 continued claims processed (5,583 under tier I, 3,483 under tier II, 3,178 under tier III and 1,234 under tier IV).

Extended Benefits – are payable to individuals who have exhausted UI or EUC08 claims. This week, 80 new EB claims and 1,363 continued EB claims were processed.

Exhaustions – 406 individuals exhausted their regular payments this week, a decrease of 38 from the previous week and a decrease of 57 from a year ago. There were 153 individuals that exhausted EUC08 and 117 individuals that exhausted EB.

Temporary Disability Insurance

Temporary Disability Insurance – 936 initial claims and 7,441 continued claims were processed for Temporary Disability Insurance. The average weekly TDI payment is \$445 per week. Rhode Island is currently paying an average of 10.7 weeks per new claim.

	Initial Claims			Continued Claims	TOTAL - Initial and Continued Claims			
	Total	New	Additional		Current Week	Previous Week	Year Ago	Two Years Ago
Total - All programs*	1,954	1,225	729	31,567	33,521	33,611	40,501	44,629
UI Claims	1,254	726	528	15,468	16,722	16,974	18,286	23,519
Change from:								
Previous Week	-63	-52	-11	-189	-252			
Year Ago	-110	-116	6	-1,454	-1,564			
Two Years Ago	-548	-228	-320	-6,249	-6,797			
EUC08 Claims	538	363	175	13,478	14,016	13,893	10,134	12,592
Extended Benefits	90	80	10	1,363	1,453	1,472	9,033	3,228
Interstate-Liable	32	23	9	463	495	461	590	812
Workshare	40	33	7	795	835	811	2,458	4,478
Workshare Equivalency	13	10	3	186	199	262	667	1,073
UI Exhaustions	-	-	-	406	406	444	463	696
EUC08 Exhaustions	-	-	-	153	153	182	103	223
EB Exhaustions	-	-	-	117	117	71	63	120
TDI Claims	936	781	155	7,441	8,377	9,329	8,623	8,728
Change from:								
Previous Week	-37	-36	-1	-915	-952			
Year Ago	299	255	44	-545	-246			

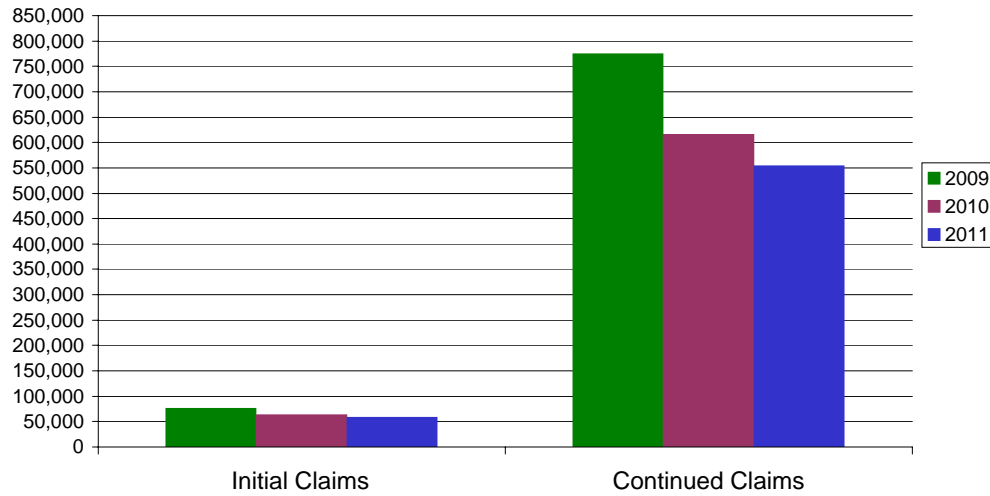
* Includes UI, EUC08, EB, Workshare & Interstate Liable.

Equal Opportunity Employer / Program / Auxiliary aids and services available upon request to individuals with disabilities / TTY via RI Relay 711.

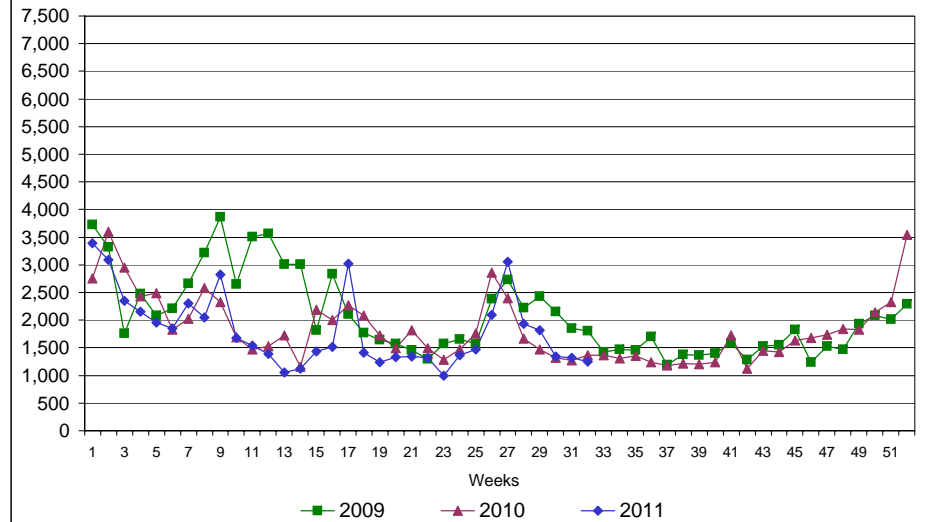
Rhode Island Department of Labor and Training

August 6, 2011

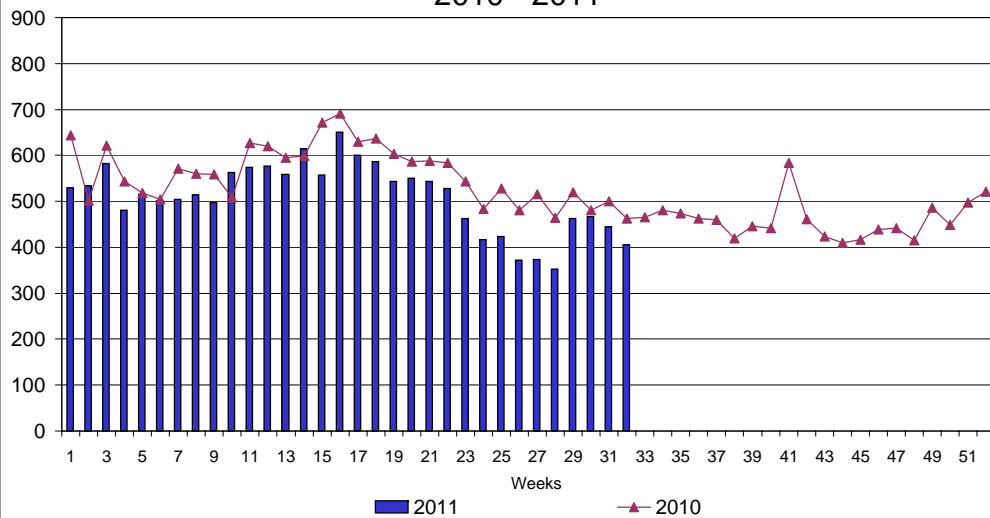
UI Claims Comparison Year to Date



UI Initial Claims 2009 - 2011



UI Exhaustions 2010 - 2011



TDI Claims Comparison Year to Date

