



Rhode Island Department of Labor and Training

Weekly Update of Claims Activity

Week Ending: August 20, 2011

Unemployment Insurance

Initial Claims – 1,799 initial claims were processed during the week ending 8/20/11, an increase of 633 from the previous week, and an increase of 487 from a year ago. The number of initial claims filed to date is down 6.5 percent from last year and down 22.7 percent from two years ago. The increase in initial claims is attributed to the filing of claims by individuals involved in a labor dispute.

Continued Claims – 15,395 continued claims were processed during the week of 8/20/11, an increase of 210 from the previous week and a decrease of 1,530 from a year ago. The number of continued claims filed to date is down 9.8 percent from a year ago and down 28.4 percent from two years ago.

Workshare – gives employers an alternative to layoffs by allowing employees to work reduced hours and collect a percentage of regular UI benefits to compensate for lost pay. This week, 76 initial claims and 854 continued claims were processed. An estimated 17 layoffs were prevented this week, as a result of Workshare.

Emergency Unemployment Compensation 08 – EUC08, which became effective July 6, 2008, provides up to 53 weeks of federally funded benefits to eligible individuals who exhausted their UI claims. This week there were 444 new EUC08 claims processed and 13,324 continued claims processed (5,510 under tier I, 3,463 under tier II, 2,974 under tier III and 1,377 under tier IV).

Extended Benefits – are payable to individuals who have exhausted UI or EUC08 claims. This week, 136 new EB claims and 1,315 continued EB claims were processed.

Exhaustions – 429 individuals exhausted their regular payments this week, a decrease of 43 from the previous week and a decrease of 51 from a year ago. There were 250 individuals that exhausted EUC08 and 83 individuals that exhausted EB.

Temporary Disability Insurance

Temporary Disability Insurance – 888 initial claims and 8,262 continued claims were processed for Temporary Disability Insurance. The average weekly TDI payment is \$440 per week. Rhode Island is currently paying an average of 10.7 weeks per new claim.

	Initial Claims			Continued Claims	TOTAL - Initial and Continued Claims			
	Total	New	Additional		Current Week	Previous Week	Year Ago	Two Years Ago
Total - All programs*	2,694	1,832	862	31,310	34,004	33,210	40,103	43,957
UI Claims	1,799	1,165	634	15,395	17,194	16,351	18,237	22,507
Change from:								
Previous Week	633	507	126	210	843			
Year Ago	487	369	118	-1,530	-1,043			
Two Years Ago	332	404	-72	-5,645	-5,313			
EUC08 Claims	640	444	196	13,324	13,964	13,917	10,446	13,194
Extended Benefits	148	136	12	1,315	1,463	1,435	8,753	3,185
Interstate-Liable	31	18	13	422	453	444	537	790
Workshare	76	69	7	854	930	1,063	2,130	4,281
Workshare Equivalency	17	15	2	276	293	267	562	1,009
UI Exhaustions	-	-	-	429	429	472	480	698
EUC08 Exhaustions	-	-	-	250	250	215	136	246
EB Exhaustions	-	-	-	83	83	101	142	133
TDI Claims	888	736	152	8,262	9,150	7,753	8,946	9,528
Change from:								
Previous Week	309	245	64	1,088	1,397			
Year Ago	13	5	8	191	204			

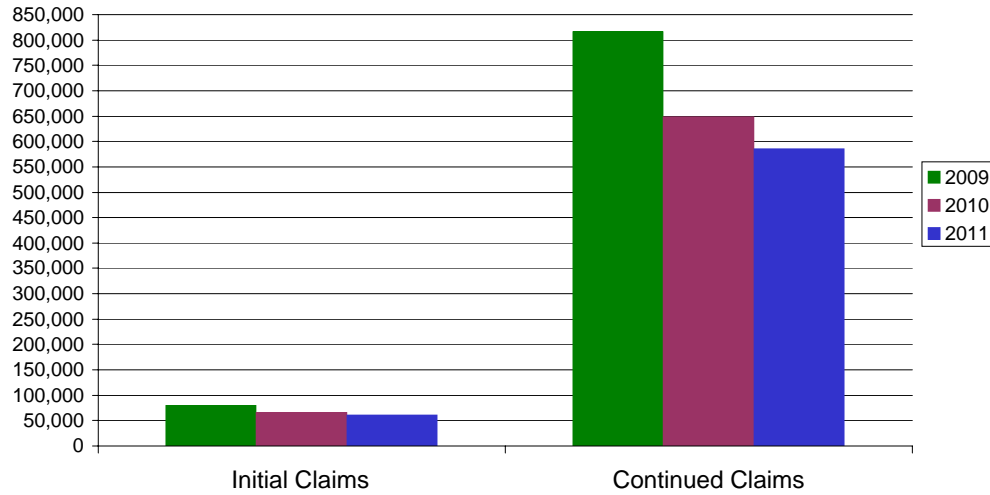
* Includes UI, EUC08, EB, Workshare & Interstate Liable.

Equal Opportunity Employer / Program / Auxiliary aids and services available upon request to individuals with disabilities / TTY via RI Relay 711.

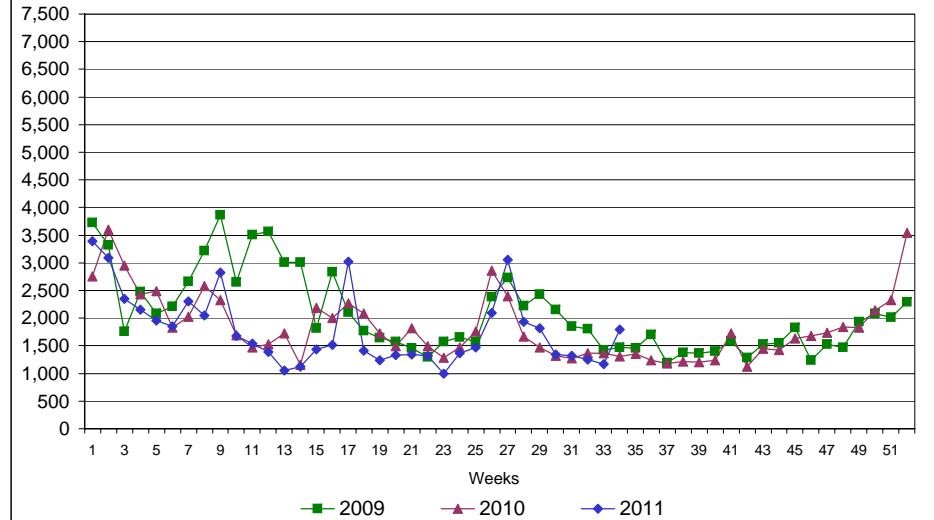
Rhode Island Department of Labor and Training

August 20, 2011

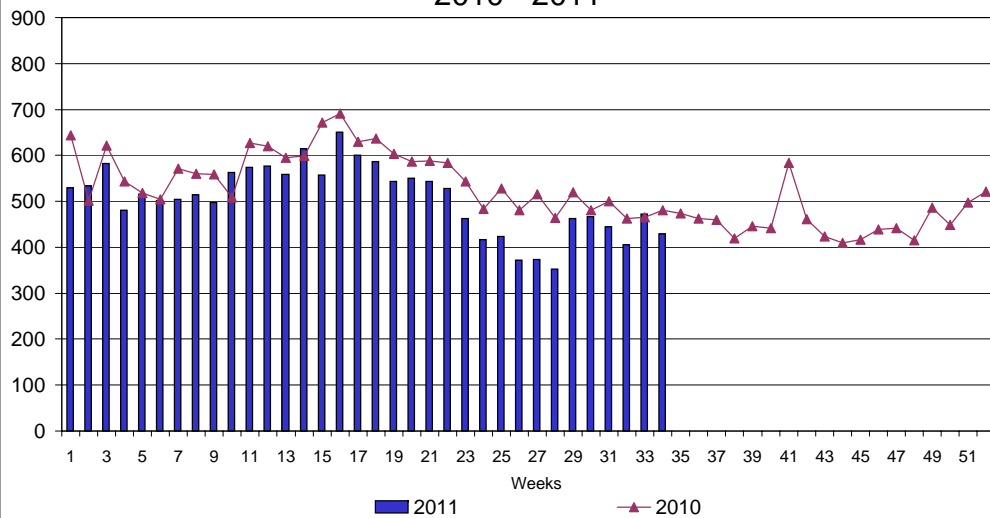
UI Claims Comparison Year to Date



UI Initial Claims 2009 - 2011



UI Exhaustions 2010 - 2011



TDI Claims Comparison Year to Date

