



## Rhode Island Department of Labor and Training

# *Weekly Update of Claims Activity*

*Week Ending: August 27, 2011*

### **Unemployment Insurance**

**Initial Claims** – 1,483 initial claims were processed during the week ending 8/27/11, a decrease of 316 from the previous week, and an increase of 133 from a year ago. The number of initial claims filed to date is down 6.1 percent from last year and down 22.3 percent from two years ago.

**Continued Claims** – 15,772 continued claims were processed during the week of 8/27/11, an increase of 377 from the previous week and a decrease of 1,015 from a year ago. The number of continued claims filed to date is down 9.7 percent from a year ago and down 28.3 percent from two years ago.

**Workshare** – gives employers an alternative to layoffs by allowing employees to work reduced hours and collect a percentage of regular UI benefits to compensate for lost pay. This week, 156 initial claims and 1,617 continued claims were processed. An estimated 48 layoffs were prevented this week, as a result of Workshare.

**Emergency Unemployment Compensation 08** – EUC08, which became effective July 6, 2008, provides up to 53 weeks of federally funded benefits to eligible individuals who exhausted their UI claims. This week there were 445 new EUC08 claims processed and 13,429 continued claims processed (5,615 under tier I, 3,503 under tier II, 2,999 under tier III and 1,312 under tier IV).

**Extended Benefits** – are payable to individuals who have exhausted UI or EUC08 claims. This week, 116 new EB claims and 1,336 continued EB claims were processed.

**Exhaustions** – 459 individuals exhausted their regular payments this week, an increase of 30 from the previous week and a decrease of 14 from a year ago. There were 215 individuals that exhausted EUC08 and 95 individuals that exhausted EB.

### **Temporary Disability Insurance**

**Temporary Disability Insurance** – 840 initial claims and 8,164 continued claims were processed for Temporary Disability Insurance. The average weekly TDI payment is \$444 per week. Rhode Island is currently paying an average of 10.7 weeks per new claim.

	Initial Claims			Continued Claims	TOTAL - Initial and Continued Claims			
	Total	New	Additional		Current Week	Previous Week	Year Ago	Two Years Ago
<b>Total - All programs*</b>	2,445	1,661	784	32,591	35,036	34,004	39,937	43,701
<b>UI Claims</b>	1,483	957	526	15,772	17,255	17,194	18,137	21,946
Change from:								
Previous Week	-316	-208	-108	377	61			
Year Ago	133	194	-61	-1,015	-882			
Two Years Ago	24	185	-161	-4,715	-4,691			
<b>EUC08 Claims</b>	639	445	194	13,429	14,068	13,964	10,673	13,461
<b>Extended Benefits</b>	126	116	10	1,336	1,462	1,463	8,620	3,329
<b>Interstate-Liable</b>	41	25	16	437	478	453	559	767
<b>Workshare</b>	156	118	38	1,617	1,773	930	1,948	4,198
<b>Workshare Equivalency</b>	48	39	9	250	298	293	597	973
<b>UI Exhaustions</b>	-	-	-	459	459	429	473	642
<b>EUC08 Exhaustions</b>	-	-	-	215	215	250	151	240
<b>EB Exhaustions</b>	-	-	-	95	95	83	183	140
<b>TDI Claims</b>	840	693	147	8,164	9,004	9,150	9,030	9,935
Change from:								
Previous Week	-48	-43	-5	-98	-146			
Year Ago	-145	-133	-12	119	-26			

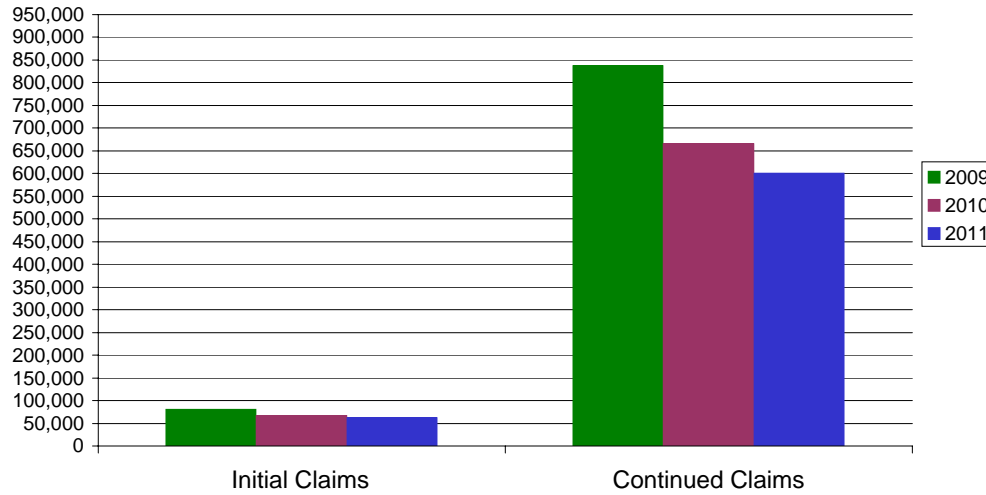
\* Includes UI, EUC08, EB, Workshare & Interstate Liable.

Equal Opportunity Employer / Program / Auxiliary aids and services available upon request to individuals with disabilities / TTY via RI Relay 711.

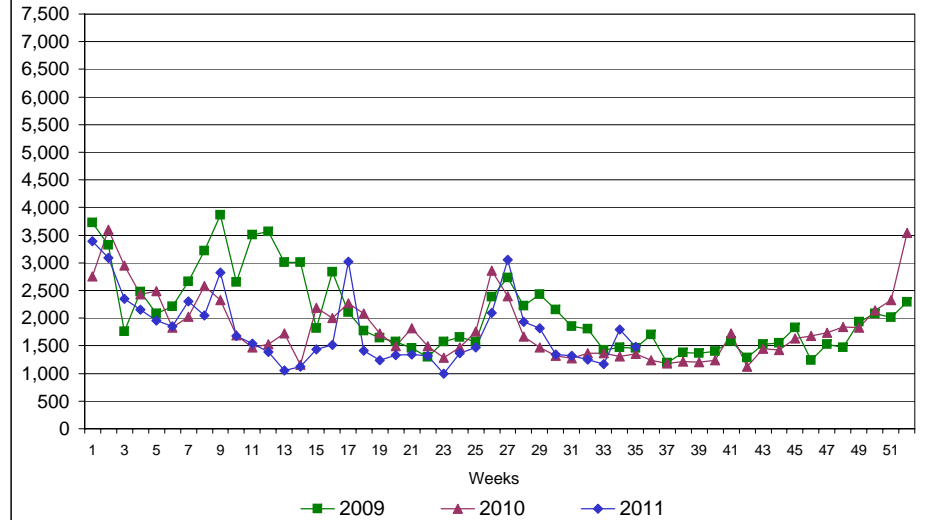
# Rhode Island Department of Labor and Training

## August 27, 2011

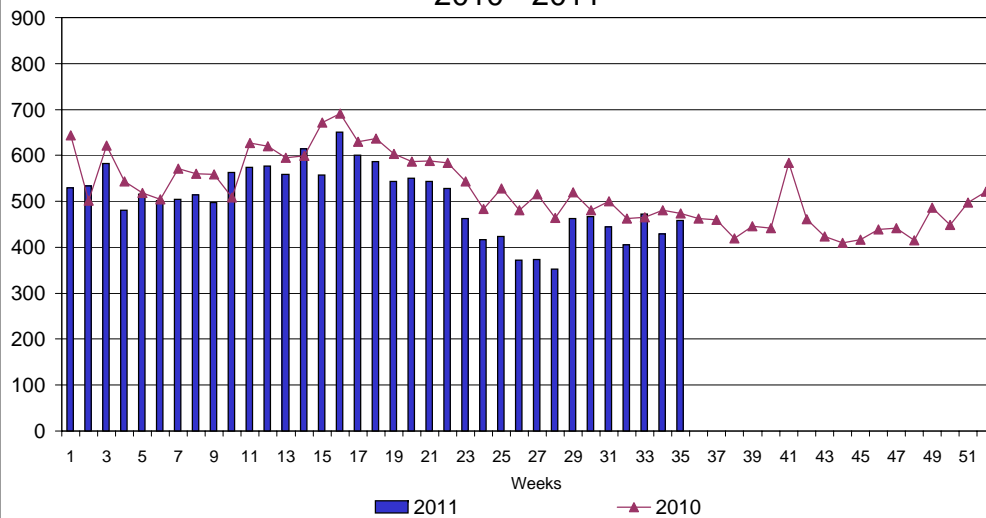
### UI Claims Comparison Year to Date



### UI Initial Claims 2009 - 2011



### UI Exhaustions 2010 - 2011



### TDI Claims Comparison Year to Date

