



Rhode Island Department of Labor and Training

Weekly Update of Claims Activity

Week Ending: September 10, 2011

Unemployment Insurance

Initial Claims – 1,679 initial claims were processed during the week ending 9/10/11, an increase of 1 from the previous week, and an increase of 497 from a year ago. The number of initial claims filed to date is down 4.6 percent from last year and down 20.9 percent from two years ago.

Continued Claims – 14,076 continued claims were processed during the week of 9/10/11, a decrease of 526 from the previous week and a decrease of 210 from a year ago. The number of continued claims filed to date is down 9.6 percent from a year ago and down 28.1 percent from two years ago.

Workshare – gives employers an alternative to layoffs by allowing employees to work reduced hours and collect a percentage of regular UI benefits to compensate for lost pay. This week, 43 initial claims and 1,195 continued claims were processed. An estimated 10 layoffs were prevented this week, as a result of Workshare.

Emergency Unemployment Compensation 08 – EUC08, which became effective July 6, 2008, provides up to 53 weeks of federally funded benefits to eligible individuals who exhausted their UI claims. This week there were 362 new EUC08 claims processed and 13,163 continued claims processed (5,431 under tier I, 3,420 under tier II, 2,977 under tier III and 1,335 under tier IV).

Extended Benefits – are payable to individuals who have exhausted UI or EUC08 claims. This week, 119 new EB claims and 1,313 continued EB claims were processed.

Exhaustions – 423 individuals exhausted their regular payments this week, an increase of 51 from the previous week and a decrease of 37 from a year ago. There were 283 individuals that exhausted EUC08 and 43 individuals that exhausted EB.

Temporary Disability Insurance

Temporary Disability Insurance – 654 initial claims and 6,979 continued claims were processed for Temporary Disability Insurance. The average weekly TDI payment is \$439 per week. Rhode Island is currently paying an average of 10.8 weeks per new claim.

	Initial Claims			Continued Claims	TOTAL - Initial and Continued Claims			
	Total	New	Additional		Current Week	Previous Week	Year Ago	Two Years Ago
Total - All programs*	2,483	1,427	1,056	30,191	32,674	33,137	36,673	39,543
UI Claims	1,679	897	782	14,076	15,755	16,280	15,468	18,486
Change from:								
Previous Week	1	-119	120	-526	-525			
Year Ago	497	176	321	-210	287			
Two Years Ago	487	279	208	-3,218	-2,731			
EUC08 Claims	590	362	228	13,163	13,753	13,896	10,938	13,257
Extended Benefits	135	119	16	1,313	1,448	1,460	8,252	3,055
Interstate-Liable	36	13	23	444	480	498	546	691
Workshare	43	36	7	1,195	1,238	1,003	1,469	4,054
Workshare Equivalency	10	8	2	314	324	259	367	937
UI Exhaustions	-	-	-	423	423	372	460	630
EUC08 Exhaustions	-	-	-	283	283	209	273	249
EB Exhaustions	-	-	-	43	43	94	259	209
TDI Claims	654	541	113	6,979	7,633	8,868	8,345	7,939
Change from:								
Previous Week	-111	-95	-16	-1,124	-1,235			
Year Ago	-202	-171	-31	-510	-712			

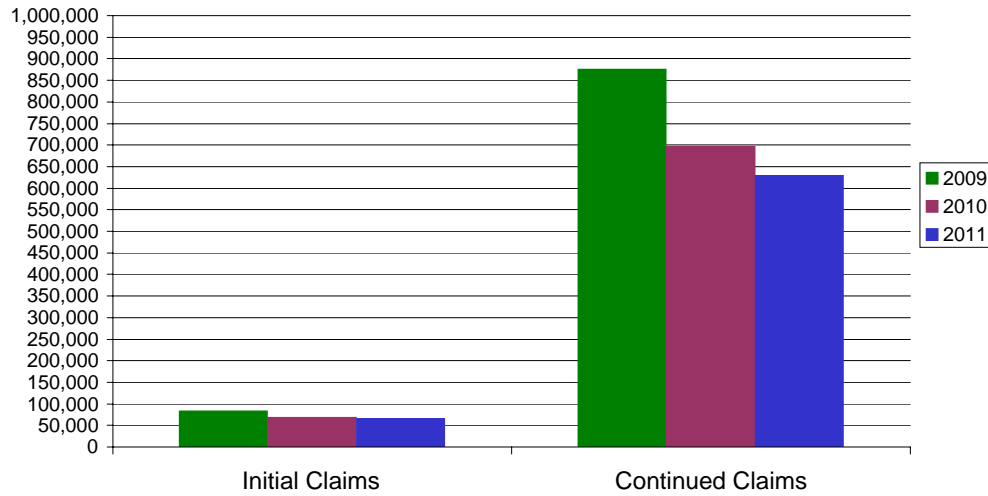
* Includes UI, EUC08, EB, Workshare & Interstate Liable.

Equal Opportunity Employer / Program / Auxiliary aids and services available upon request to individuals with disabilities / TTY via RI Relay 711.

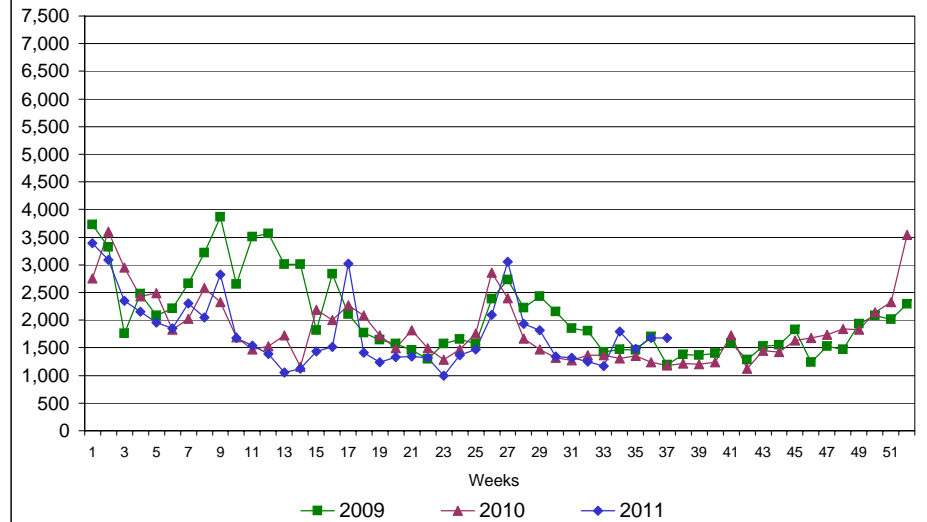
Rhode Island Department of Labor and Training

September 10, 2011

UI Claims Comparison Year to Date



UI Initial Claims 2009 - 2011



UI Exhaustions 2010 - 2011



TDI Claims Comparison Year to Date

