



Rhode Island Department of Labor and Training

Weekly Update of Claims Activity

Week Ending: September 24, 2011

Unemployment Insurance

Initial Claims – 1,260 initial claims were processed during the week ending 9/24/11, a decrease of 453 from the previous week, and an increase of 57 from a year ago. The number of initial claims filed to date is down 3.6 percent from last year and down 20.0 percent from two years ago.

Continued Claims – 11,900 continued claims were processed during the week of 9/24/11, a decrease of 799 from the previous week and a decrease of 1,364 from a year ago. The number of continued claims filed to date is down 9.6 percent from a year ago and down 28.1 percent from two years ago.

Workshare – gives employers an alternative to layoffs by allowing employees to work reduced hours and collect a percentage of regular UI benefits to compensate for lost pay. This week, 23 initial claims and 897 continued claims were processed. An estimated 5 layoffs were prevented this week, as a result of Workshare.

Emergency Unemployment Compensation 08 – EUC08, which became effective July 6, 2008, provides up to 53 weeks of federally funded benefits to eligible individuals who exhausted their UI claims. This week there were 421 new EUC08 claims processed and 13,092 continued claims processed (5,320 under tier I, 3,463 under tier II, 2,990 under tier III and 1,319 under tier IV).

Extended Benefits – are payable to individuals who have exhausted UI or EUC08 claims. This week, 129 new EB claims and 1,514 continued EB claims were processed.

Exhaustions – 412 individuals exhausted their regular payments this week, an increase of 18 from the previous week and a decrease of 34 from a year ago. There were 234 individuals that exhausted EUC08 and 90 individuals that exhausted EB.

Temporary Disability Insurance

Temporary Disability Insurance – 976 initial claims and 7,667 continued claims were processed for Temporary Disability Insurance. The average weekly TDI payment is \$435 per week. Rhode Island is currently paying an average of 10.7 weeks per new claim.

	Initial Claims			Continued Claims	TOTAL - Initial and Continued Claims			
	Total	New	Additional		Current Week	Previous Week	Year Ago	Two Years Ago
Total - All programs*	2,129	1,382	747	27,862	29,991	31,751	35,816	39,914
UI Claims	1,260	781	479	11,900	13,160	14,412	14,467	18,204
Change from:								
Previous Week	-453	-329	-124	-799	-1,252			
Year Ago	57	54	3	-1,364	-1,307			
Two Years Ago	-105	29	-134	-4,939	-5,044			
EUC08 Claims	660	421	239	13,092	13,752	13,924	11,274	13,921
Extended Benefits	142	129	13	1,514	1,656	1,592	7,786	3,113
Interstate-Liable	44	33	11	459	503	493	608	700
Workshare	23	18	5	897	920	1,330	1,681	3,976
Workshare Equivalency	5	4	1	245	250	384	418	943
UI Exhaustions	-	-	-	412	412	394	446	622
EUC08 Exhaustions	-	-	-	234	234	245	260	232
EB Exhaustions	-	-	-	90	90	53	339	137
TDI Claims	976	808	168	7,667	8,643	8,275	8,661	7,754
Change from:								
Previous Week	159	139	20	209	368			
Year Ago	190	144	46	-208	-18			

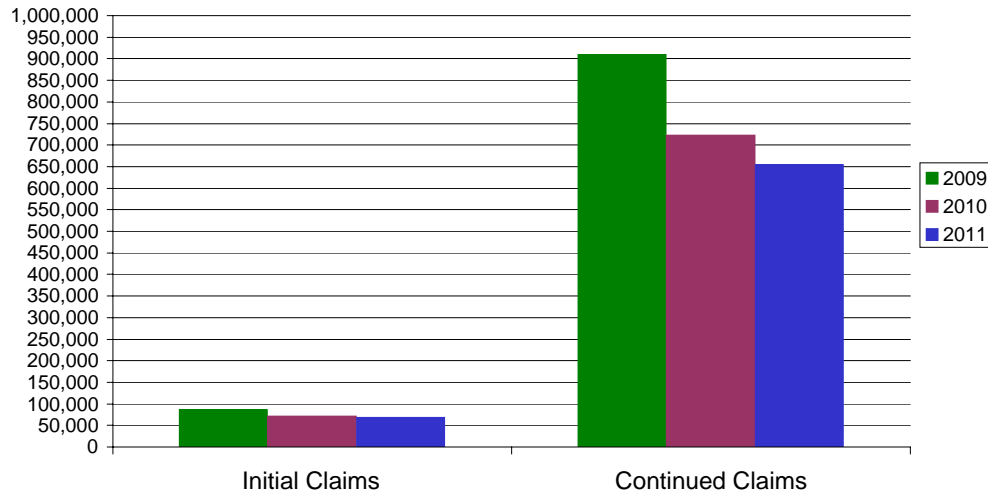
* Includes UI, EUC08, EB, Workshare & Interstate Liable.

Equal Opportunity Employer / Program / Auxiliary aids and services available upon request to individuals with disabilities / TTY via RI Relay 711.

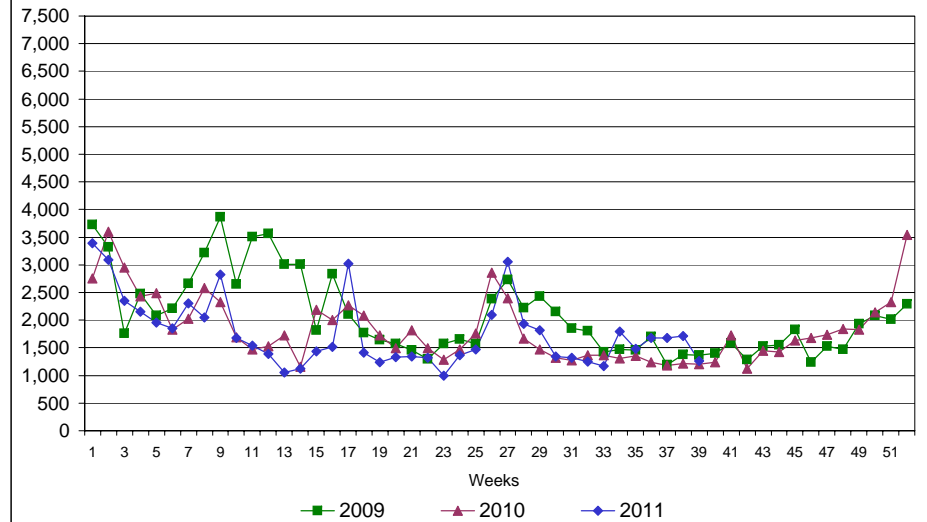
Rhode Island Department of Labor and Training

September 24, 2011

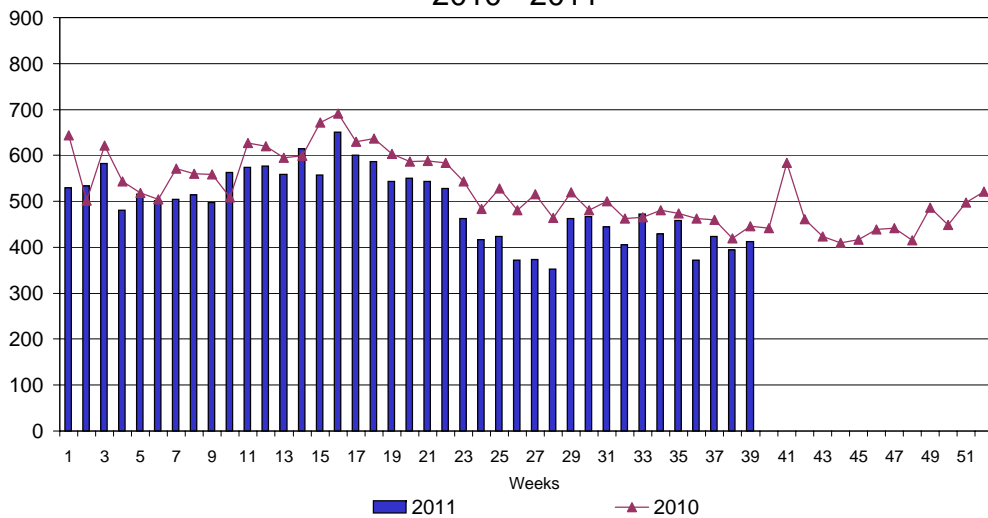
UI Claims Comparison Year to Date



UI Initial Claims 2009 - 2011



UI Exhaustions 2010 - 2011



TDI Claims Comparison Year to Date

