



Rhode Island Department of Labor and Training

Weekly Update of Claims Activity

Week Ending: October 15, 2011

Unemployment Insurance

Initial Claims – 1,315 initial claims were processed during the week ending 10/15/11, a decrease of 395 from the previous week, and an increase of 197 from a year ago. The number of initial claims filed to date is down 2.9 percent from last year and down 18.8 percent from two years ago.

Continued Claims – 11,608 continued claims were processed during the week of 10/15/11, a decrease of 36 from the previous week and a decrease of 929 from a year ago. The number of continued claims filed to date is down 9.5 percent from a year ago and down 27.9 percent from two years ago.

Workshare – gives employers an alternative to layoffs by allowing employees to work reduced hours and collect a percentage of regular UI benefits to compensate for lost pay. This week, 15 initial claims and 859 continued claims were processed. An estimated 5 layoffs were prevented this week, as a result of Workshare.

Emergency Unemployment Compensation 08 – EUC08, which became effective July 6, 2008, provides up to 53 weeks of federally funded benefits to eligible individuals who exhausted their UI claims. This week there were 322 new EUC08 claims processed and 12,576 continued claims processed (5,025 under tier I, 3,423 under tier II, 2,830 under tier III and 1,298 under tier IV).

Extended Benefits – are payable to individuals who have exhausted UI or EUC08 claims. This week, 103 new EB claims and 1,497 continued EB claims were processed.

Exhaustions – 353 individuals exhausted their regular payments this week, an increase of 13 from the previous week and a decrease of 108 from a year ago. There were 218 individuals that exhausted EUC08 and 87 individuals that exhausted EB.

Temporary Disability Insurance

Temporary Disability Insurance – 675 initial claims and 6,805 continued claims were processed for Temporary Disability Insurance. The average weekly TDI payment is \$436 per week. Rhode Island is currently paying an average of 10.7 weeks per new claim.

| | Initial Claims | | | Continued Claims | TOTAL - Initial and Continued Claims | | | |
|------------------------------|-----------------------|------------|-------------------|-------------------------|---|----------------------|-----------------|----------------------|
| | Total | New | Additional | | Current Week | Previous Week | Year Ago | Two Years Ago |
| Total - All programs* | 2,016 | 1,290 | 726 | 26,969 | 28,985 | 29,994 | 34,486 | 37,095 |
| UI Claims | 1,315 | 825 | 490 | 11,608 | 12,923 | 13,354 | 13,655 | 16,281 |
| Change from: | | | | | | | | |
| Previous Week | -395 | -348 | -47 | -36 | -431 | | | |
| Year Ago | 197 | 150 | 47 | -929 | -732 | | | |
| Two Years Ago | 31 | 144 | -113 | -3,389 | -3,358 | | | |
| EUC08 Claims | 536 | 322 | 214 | 12,576 | 13,112 | 13,501 | 11,767 | 13,689 |
| Extended Benefits | 109 | 103 | 6 | 1,497 | 1,606 | 1,670 | 6,717 | 3,059 |
| Interstate-Liable | 41 | 29 | 12 | 429 | 470 | 473 | 563 | 648 |
| Workshare | 15 | 11 | 4 | 859 | 874 | 996 | 1,784 | 3,418 |
| Workshare Equivalency | 5 | 3 | 2 | 226 | 231 | 258 | 419 | 828 |
| UI Exhaustions | - | - | - | 353 | 353 | 340 | 461 | 733 |
| EUC08 Exhaustions | - | - | - | 218 | 218 | 216 | 242 | 285 |
| EB Exhaustions | - | - | - | 87 | 87 | 114 | 358 | 147 |
| TDI Claims | 675 | 560 | 115 | 6,805 | 7,480 | 8,473 | 7,711 | 7,616 |
| Change from: | | | | | | | | |
| Previous Week | -75 | -61 | -14 | -918 | -993 | | | |
| Year Ago | -27 | -20 | -7 | -204 | -231 | | | |

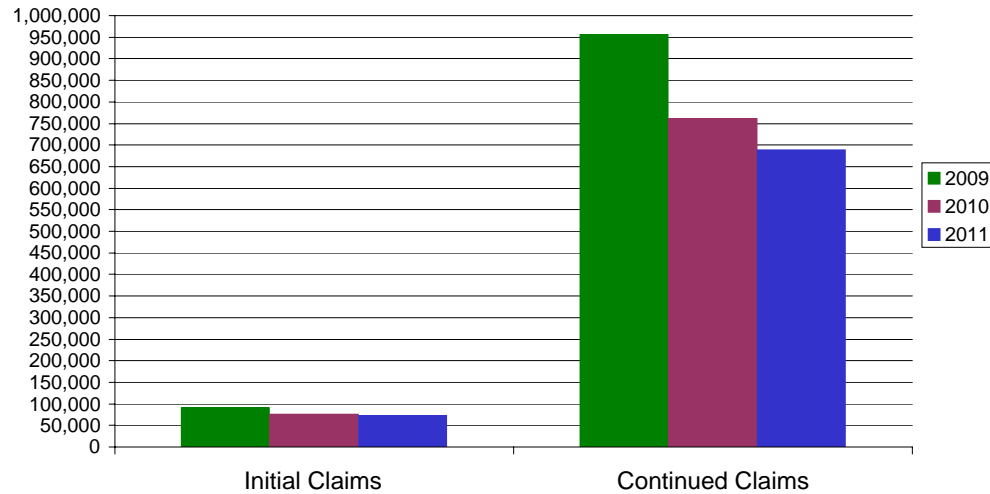
* Includes UI, EUC08, EB, Workshare & Interstate Liable.

Equal Opportunity Employer / Program / Auxiliary aids and services available upon request to individuals with disabilities / TTY via RI Relay 711.

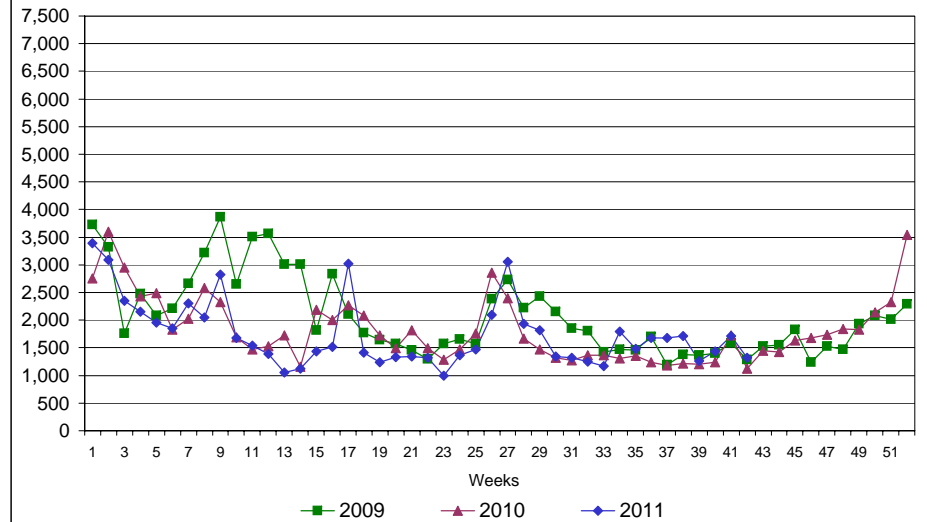
Rhode Island Department of Labor and Training

October 15, 2011

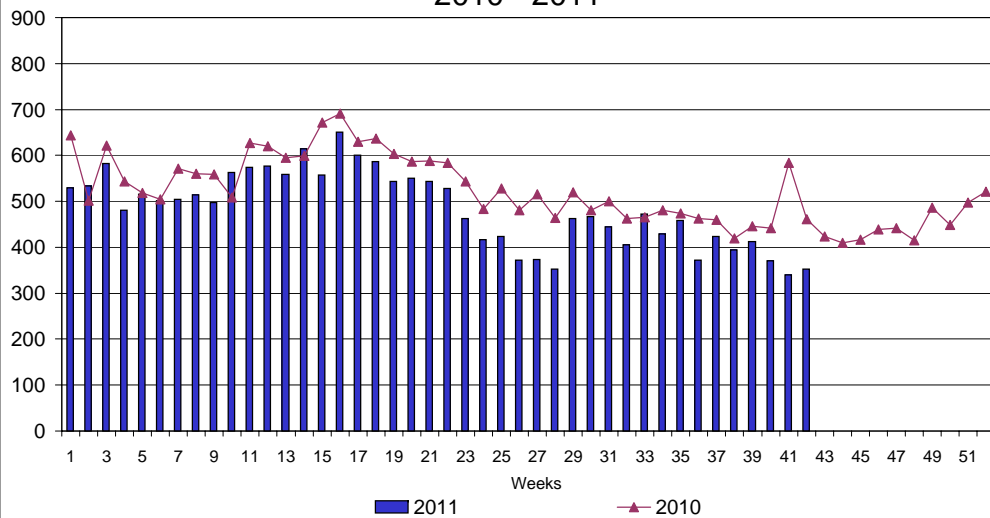
UI Claims Comparison Year to Date



UI Initial Claims 2009 - 2011



UI Exhaustions 2010 - 2011



TDI Claims Comparison Year to Date

