



Rhode Island Department of Labor and Training

Weekly Update of Claims Activity

Week Ending: October 22, 2011

Unemployment Insurance

Initial Claims – 1,438 initial claims were processed during the week ending 10/22/11, an increase of 123 from the previous week, and a decrease of 12 from a year ago. The number of initial claims filed to date is down 2.9 percent from last year and down 18.6 percent from two years ago.

Continued Claims – 11,750 continued claims were processed during the week of 10/22/11, an increase of 142 from the previous week and a decrease of 1,252 from a year ago. The number of continued claims filed to date is down 9.5 percent from a year ago and down 27.8 percent from two years ago.

Workshare – gives employers an alternative to layoffs by allowing employees to work reduced hours and collect a percentage of regular UI benefits to compensate for lost pay. This week, 16 initial claims and 848 continued claims were processed. An estimated 5 layoffs were prevented this week, as a result of Workshare.

Emergency Unemployment Compensation 08 – EUC08, which became effective July 6, 2008, provides up to 53 weeks of federally funded benefits to eligible individuals who exhausted their UI claims. This week there were 381 new EUC08 claims processed and 12,755 continued claims processed (5,009 under tier I, 3,490 under tier II, 2,880 under tier III and 1,376 under tier IV).

Extended Benefits – are payable to individuals who have exhausted UI or EUC08 claims. This week, 130 new EB claims and 1,529 continued EB claims were processed.

Exhaustions – 390 individuals exhausted their regular payments this week, an increase of 37 from the previous week and a decrease of 34 from a year ago. There were 225 individuals that exhausted EUC08 and 91 individuals that exhausted EB.

Temporary Disability Insurance

Temporary Disability Insurance – 731 initial claims and 7,461 continued claims were processed for Temporary Disability Insurance. The average weekly TDI payment is \$435 per week. Rhode Island is currently paying an average of 10.7 weeks per new claim.

	Initial Claims			Continued Claims	TOTAL - Initial and Continued Claims			
	Total	New	Additional		Current Week	Previous Week	Year Ago	Two Years Ago
Total - All programs*	2,281	1,448	833	27,333	29,614	28,985	35,290	38,572
UI Claims	1,438	901	537	11,750	13,188	12,923	14,452	17,074
Change from:								
Previous Week	123	76	47	142	265			
Year Ago	-12	-78	66	-1,252	-1,264			
Two Years Ago	-87	44	-131	-3,799	-3,886			
EUC08 Claims	636	381	255	12,755	13,391	13,112	12,218	14,351
Extended Benefits	141	130	11	1,529	1,670	1,606	6,449	3,130
Interstate-Liable	50	32	18	451	501	470	572	678
Workshare	16	4	12	848	864	874	1,599	3,339
Workshare Equivalency	5	1	4	223	228	231	369	743
UI Exhaustions	-	-	-	390	390	353	424	621
EUC08 Exhaustions	-	-	-	225	225	218	167	250
EB Exhaustions	-	-	-	91	91	87	419	170
TDI Claims	731	618	113	7,461	8,192	7,480	8,329	9,400
Change from:								
Previous Week	56	58	-2	656	712			
Year Ago	-18	-2	-16	-119	-137			

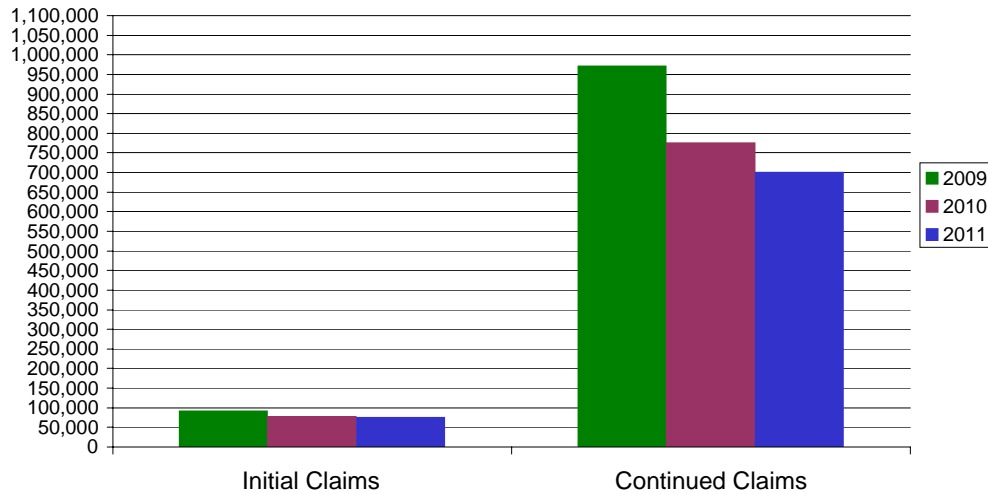
* Includes UI, EUC08, EB, Workshare & Interstate Liable.

Equal Opportunity Employer / Program / Auxiliary aids and services available upon request to individuals with disabilities / TTY via RI Relay 711.

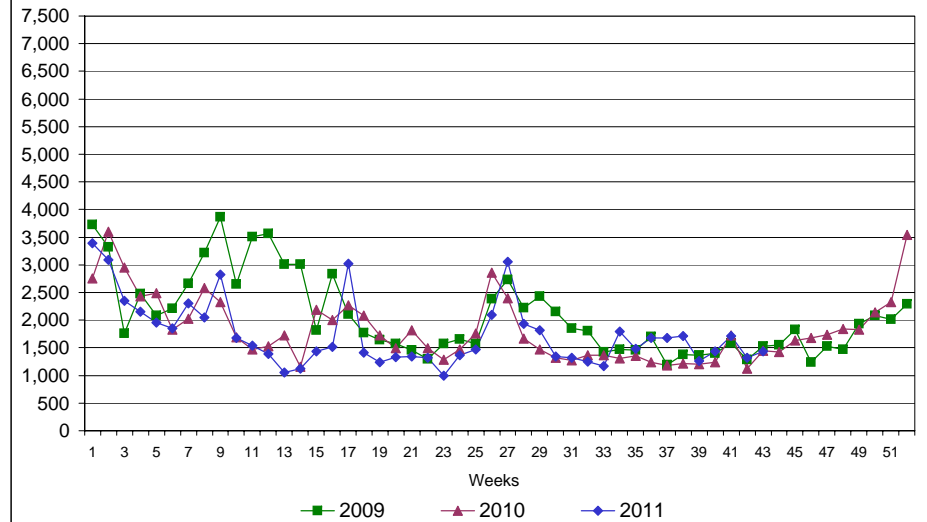
Rhode Island Department of Labor and Training

October 22, 2011

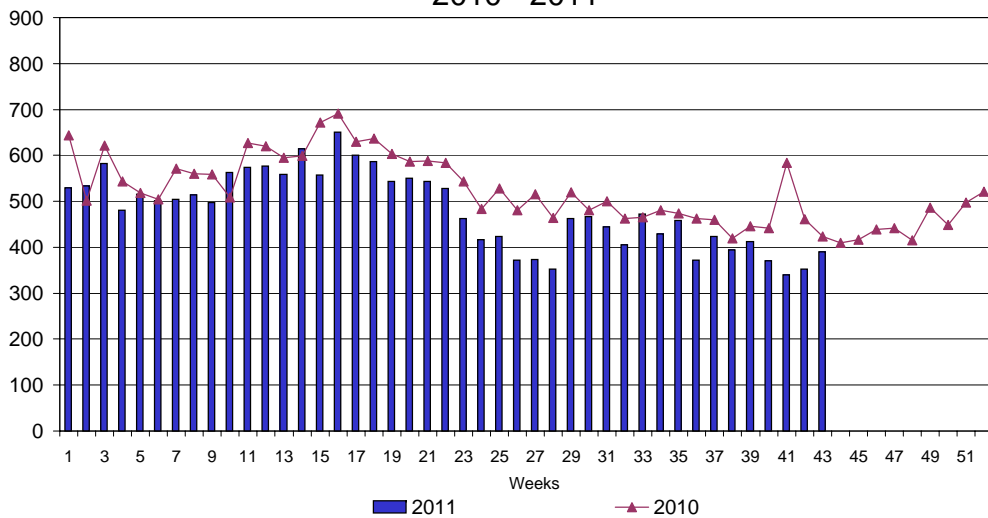
UI Claims Comparison Year to Date



UI Initial Claims 2009 - 2011



UI Exhaustions 2010 - 2011



TDI Claims Comparison Year to Date

