



## Rhode Island Department of Labor and Training

# *Weekly Update of Claims Activity*

*Week Ending: November 12, 2011*

### **Unemployment Insurance**

**Initial Claims** – 1,513 initial claims were processed during the week ending 11/12/11, a decrease of 80 from the previous week, and a decrease of 165 from a year ago. The number of initial claims filed to date is down 2.9 percent from last year and down 17.8 percent from two years ago.

**Continued Claims** – 12,587 continued claims were processed during the week of 11/12/11, a decrease of 142 from the previous week and a decrease of 389 from a year ago. The number of continued claims filed to date is down 9.4 percent from a year ago and down 27.4 percent from two years ago.

**Workshare** – gives employers an alternative to layoffs by allowing employees to work reduced hours and collect a percentage of regular UI benefits to compensate for lost pay. This week, 80 initial claims and 1,054 continued claims were processed. An estimated 19 layoffs were prevented this week, as a result of Workshare.

**Emergency Unemployment Compensation 08** – EUC08, which became effective July 6, 2008, provides up to 53 weeks of federally funded benefits to eligible individuals who exhausted their UI claims. This week there were 361 new EUC08 claims processed and 12,629 continued claims processed (5,049 under tier I, 3,439 under tier II, 2,833 under tier III and 1,308 under tier IV).

**Extended Benefits** – are payable to individuals who have exhausted UI or EUC08 claims. This week, 91 new EB claims and 1,612 continued EB claims were processed.

**Exhaustions** – 367 individuals exhausted their regular payments this week, an increase of 16 from the previous week and a decrease of 72 from a year ago. There were 201 individuals that exhausted EUC08 and 43 individuals that exhausted EB.

### **Temporary Disability Insurance**

**Temporary Disability Insurance** – 583 initial claims were processed for Temporary Disability Insurance. Rhode Island is currently paying an average of 10.7 weeks per new claim.

	Initial Claims			Continued Claims	TOTAL - Initial and Continued Claims			
	Total	New	Additional		Current Week	Previous Week	Year Ago	Two Years Ago
<b>Total - All programs*</b>	2,325	1,536	789	28,421	30,746	31,165	35,096	38,031
<b>UI Claims</b>	1,513	992	521	12,587	14,100	14,322	14,654	16,286
Change from:								
Previous Week	-80	29	-109	-142	-222			
Year Ago	-165	-18	-147	-389	-554			
Two Years Ago	269	317	-48	-2,455	-2,186			
<b>EUC08 Claims</b>	596	361	235	12,629	13,225	13,585	13,763	14,245
<b>Extended Benefits</b>	101	91	10	1,612	1,713	1,708	4,486	3,049
<b>Interstate-Liable</b>	35	21	14	539	574	561	611	652
<b>Workshare</b>	80	71	9	1,054	1,134	989	1,582	3,799
<b>Workshare Equivalency</b>	19	16	3	264	283	244	390	864
<b>UI Exhaustions</b>	-	-	-	367	367	351	439	545
<b>EUC08 Exhaustions</b>	-	-	-	201	201	261	115	304
<b>EB Exhaustions</b>	-	-	-	43	43	68	697	153
<b>TDI Claims</b>	583	460	123	N/A	N/A	7,829	8,412	7,795
Change from:								
Previous Week	-295	-257	-38	N/A	N/A			
Year Ago	-246	-251	5	N/A	N/A			

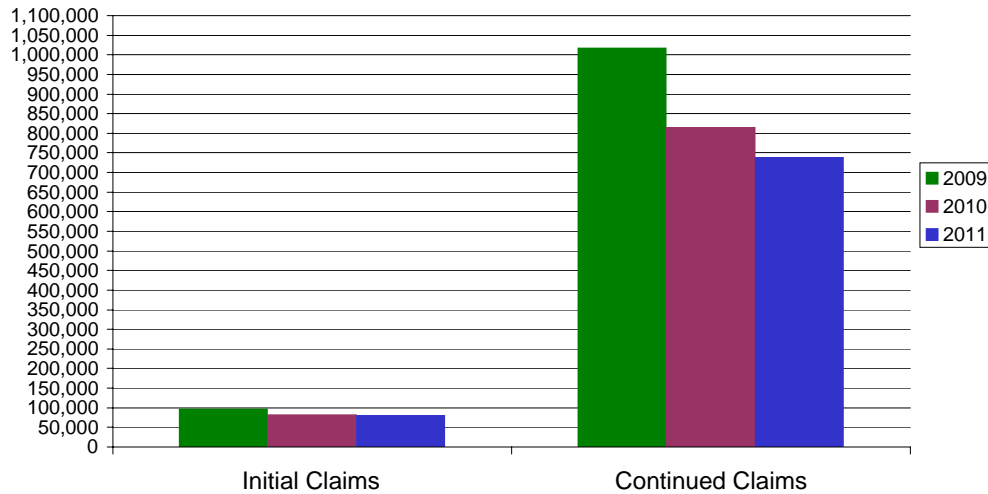
\* Includes UI, EUC08, EB, Workshare & Interstate Liable.

Equal Opportunity Employer / Program / Auxiliary aids and services available upon request to individuals with disabilities / TTY via RI Relay 711.

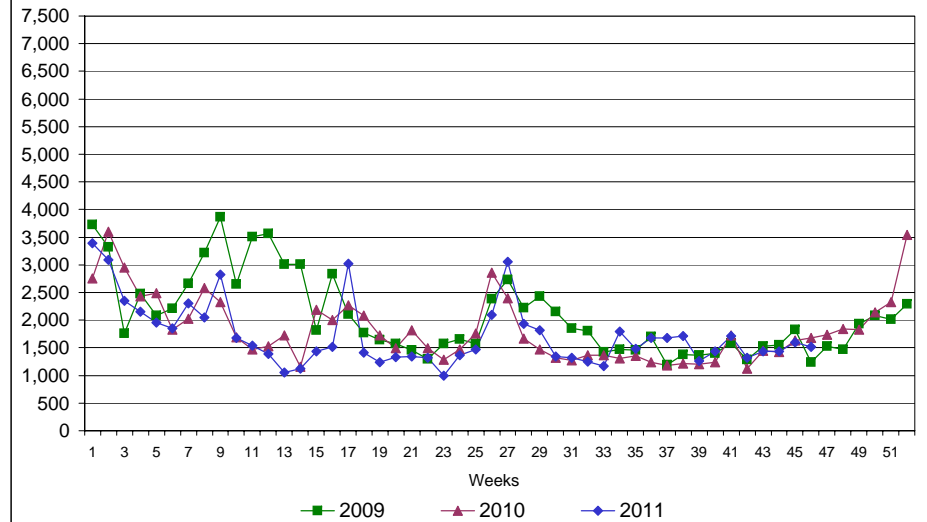
# Rhode Island Department of Labor and Training

## November 12, 2011

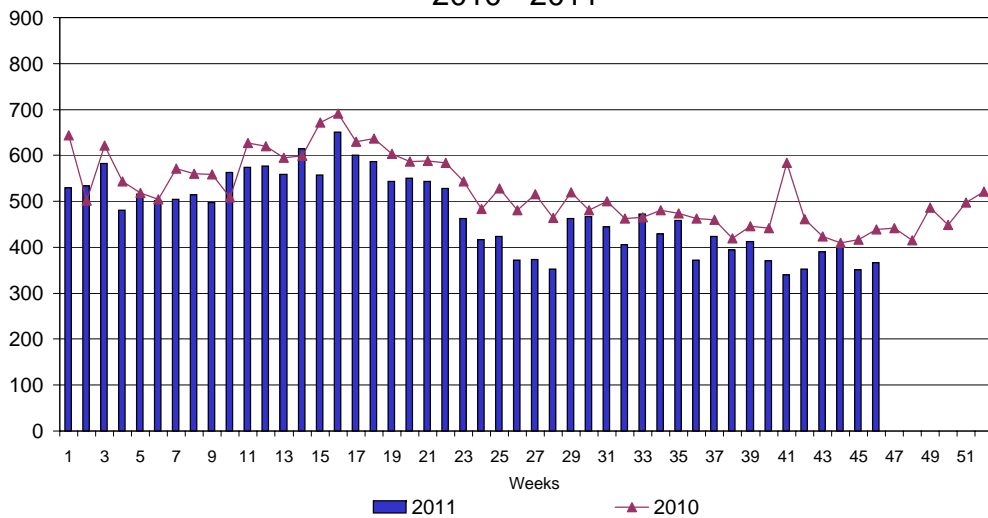
### UI Claims Comparison Year to Date



### UI Initial Claims 2009 - 2011



### UI Exhaustions 2010 - 2011



### TDI Claims Comparison Year to Date

