



Rhode Island Department of Labor and Training

Weekly Update of Claims Activity

Week Ending: December 31, 2011

Unemployment Insurance

Initial Claims – 3,720 initial claims were processed during the week ending 12/31/11, an increase of 881 from the previous week, and an increase of 325 from a year ago.

Continued Claims – 15,632 continued claims were processed during the week of 12/31/11, an increase of 321 from the previous week and a decrease of 2,112 from a year ago.

Workshare – gives employers an alternative to layoffs by allowing employees to work reduced hours and collect a percentage of regular UI benefits to compensate for lost pay. This week, 37 initial claims and 1,234 continued claims were processed. An estimated 11 layoffs were prevented this week, as a result of Workshare.

Emergency Unemployment Compensation 08 – EUC08, which became effective July 6, 2008, provides up to 53 weeks of federally funded benefits to eligible individuals who exhausted their UI claims. This week there were 286 new EUC08 claims processed and 12,250 continued claims processed (5,048 under tier I, 3,063 under tier II, 2,824 under tier III and 1,315 under tier IV).

Extended Benefits – are payable to individuals who have exhausted UI or EUC08 claims. This week, 106 new EB claims and 1,835 continued EB claims were processed.

Exhaustions – 391 individuals exhausted their regular payments this week, a decrease of 41 from the previous week and a decrease of 138 from a year ago. There were 233 individuals that exhausted EUC08 and 90 individuals that exhausted EB.

Temporary Disability Insurance

Temporary Disability Insurance – 402 initial claims and 5,905 continued claims were processed for Temporary Disability Insurance. The average weekly TDI payment is \$451 per week. Rhode Island is currently paying an average of 10.7 weeks per new claim.

	Initial Claims			Continued Claims	TOTAL - Initial and Continued Claims			
	Total	New	Additional		Current Week	Previous Week	Year Ago	Two Years Ago
Total - All programs*	4,406	2,053	2,353	31,523	35,929	35,235	40,830	44,976
UI Claims	3,720	1,614	2,106	15,632	19,352	18,150	21,139	21,131
Change from:								
Previous Week	881	227	654	321	1,202			
Year Ago	325	-66	391	-2,112	-1,787			
Two Years Ago	960	-265	1,225	-2,739	-1,779			
EUC08 Claims	497	286	211	12,250	12,747	13,259	14,026	19,466
Extended Benefits	119	106	13	1,835	1,954	1,963	3,842	1,864
Interstate-Liable	33	22	11	572	605	605	670	742
Workshare	37	25	12	1,234	1,271	1,258	1,153	1,773
Workshare Equivalency	11	7	4	311	322	333	276	437
UI Exhaustions	-	-	-	391	391	432	529	643
EUC08 Exhaustions	-	-	-	233	233	222	324	1
EB Exhaustions	-	-	-	90	90	48	75	142
TDI Claims	402	338	64	5,905	6,307	8,065	6,740	6,937
Change from:								
Previous Week	-149	-111	-38	-1,609	-1,758			
Year Ago	-149	-122	-27	-284	-433			

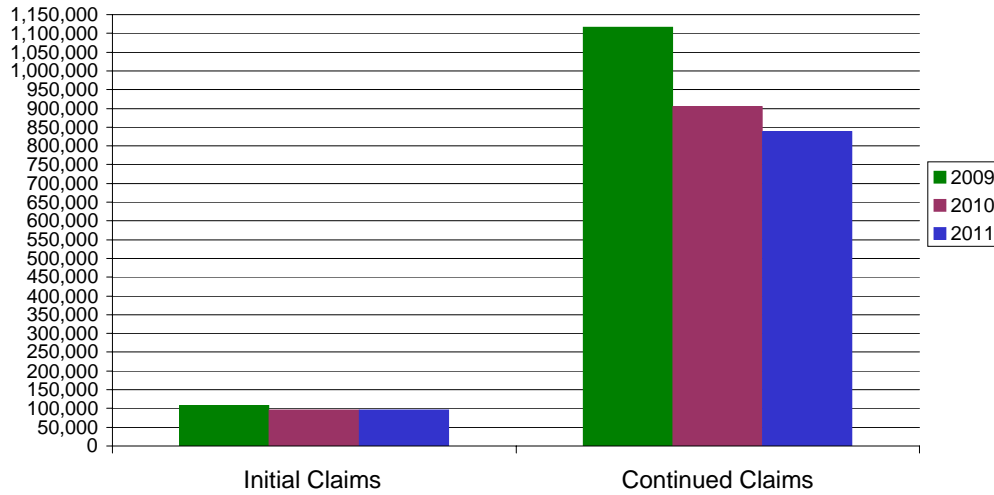
* Includes UI, EUC08, EB, Workshare & Interstate Liable.

Equal Opportunity Employer / Program / Auxiliary aids and services available upon request to individuals with disabilities / TTY via RI Relay 711.

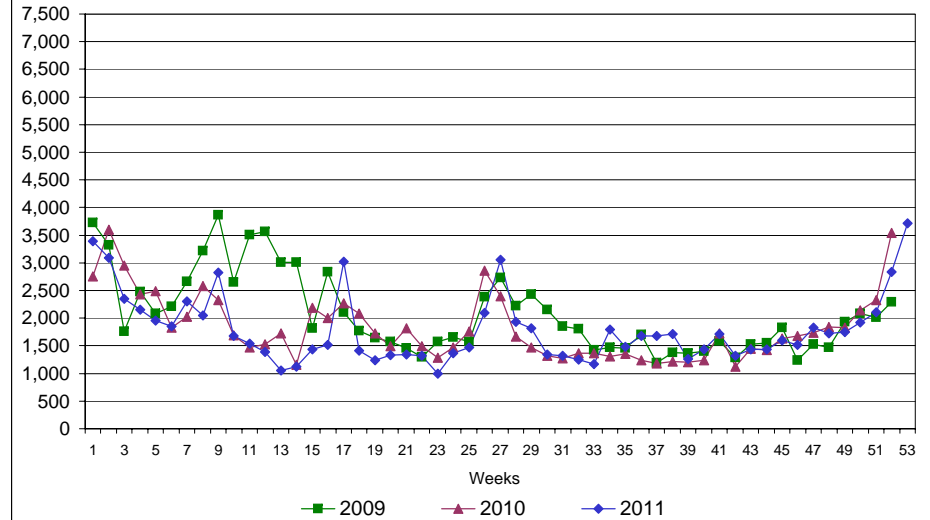
Rhode Island Department of Labor and Training

December 31, 2011

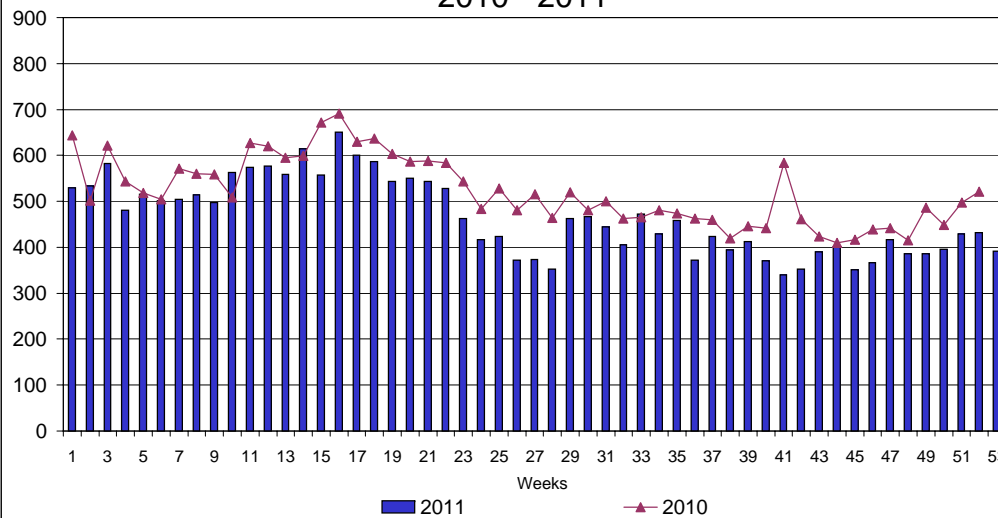
UI Claims Comparison Year to Date



UI Initial Claims 2009 - 2011



UI Exhaustions 2010 - 2011



TDI Claims Comparison Year to Date

