



Rhode Island Department of Labor and Training

Weekly Update of Claims Activity

Week Ending: January 28, 2012

Unemployment Insurance

Initial Claims – 1,955 initial claims were processed during the week ending 1/28/12, a decrease of 195 from the previous week, and an increase of 3 from a year ago.

Continued Claims – 18,970 continued claims were processed during the week of 1/28/12, an increase of 629 from the previous week and a decrease of 1,319 from a year ago.

Workshare – gives employers an alternative to layoffs by allowing employees to work reduced hours and collect a percentage of regular UI benefits to compensate for lost pay. This week, 72 initial claims and 1,097 continued claims were processed. An estimated 17 layoffs were prevented this week, as a result of Workshare.

Emergency Unemployment Compensation 08 – EUC08, which became effective July 6, 2008, provides up to 53 weeks of federally funded benefits to eligible individuals who exhausted their UI claims. This week there were 447 new EUC08 claims processed and 11,833 continued claims processed (4,842 under tier I, 2,932 under tier II, 2,844 under tier III and 1,215 under tier IV).

Extended Benefits – are payable to individuals who have exhausted UI or EUC08 claims. This week, 138 new EB claims and 1,850 continued EB claims were processed.

Exhaustions – 463 individuals exhausted their regular payments this week, an increase of 48 from the previous week and a decrease of 53 from a year ago. There were 204 individuals that exhausted EUC08 and 106 individuals that exhausted EB.

Temporary Disability Insurance

Temporary Disability Insurance – 684 initial claims and 7,145 continued claims were processed for Temporary Disability Insurance. The average weekly TDI payment is \$442 per week. Rhode Island is currently paying an average of 10.6 weeks per new claim.

	Initial Claims			Continued Claims	TOTAL - Initial and Continued Claims			
	Total	New	Additional		Current Week	Previous Week	Year Ago	Two Years Ago
Total - All programs*	2,914	1,927	987	34,320	37,234	35,888	42,199	51,420
UI Claims	1,955	1,283	672	18,970	20,925	20,491	22,241	26,077
Change from:								
Previous Week	-195	-190	-5	629	434			
Year Ago	3	49	-46	-1,319	-1,316			
Two Years Ago	-533	-571	38	-4,619	-5,152			
EUC08 Claims	690	447	243	11,833	12,523	12,299	13,843	20,884
Extended Benefits	152	138	14	1,850	2,002	1,947	3,530	1,211
Interstate-Liable	45	23	22	570	615	575	650	769
Workshare	72	36	36	1,097	1,169	576	1,935	2,479
Workshare Equivalency	17	10	7	266	283	164	612	625
UI Exhaustions	-	-	-	463	463	415	516	518
EUC08 Exhaustions	-	-	-	204	204	237	160	142
EB Exhaustions	-	-	-	106	106	82	149	107
TDI Claims	684	574	110	7,145	7,829	6,590	7,805	7,867
Change from:								
Previous Week	-33	-44	11	1,272	1,239			
Year Ago	-242	-203	-39	266	24			

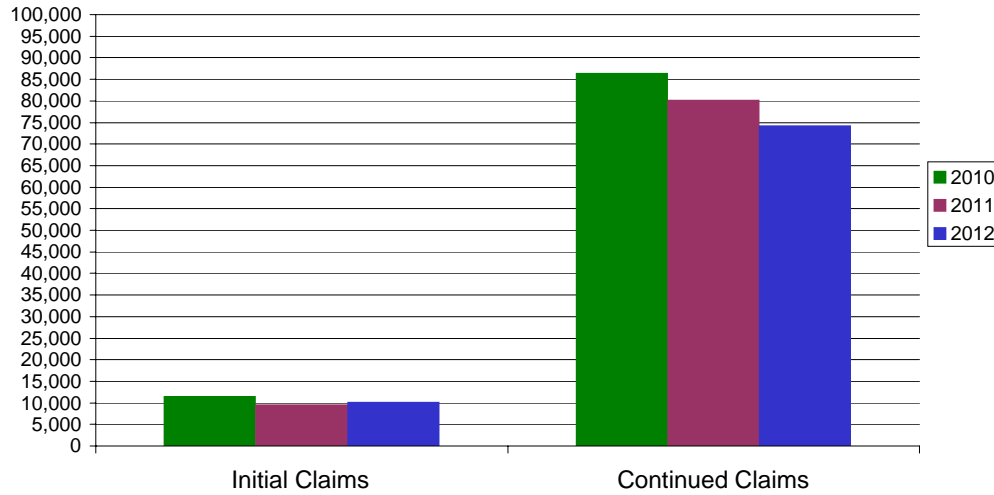
* Includes UI, EUC08, EB, Workshare & Interstate Liable.

Equal Opportunity Employer / Program / Auxiliary aids and services available upon request to individuals with disabilities / TTY via RI Relay 711.

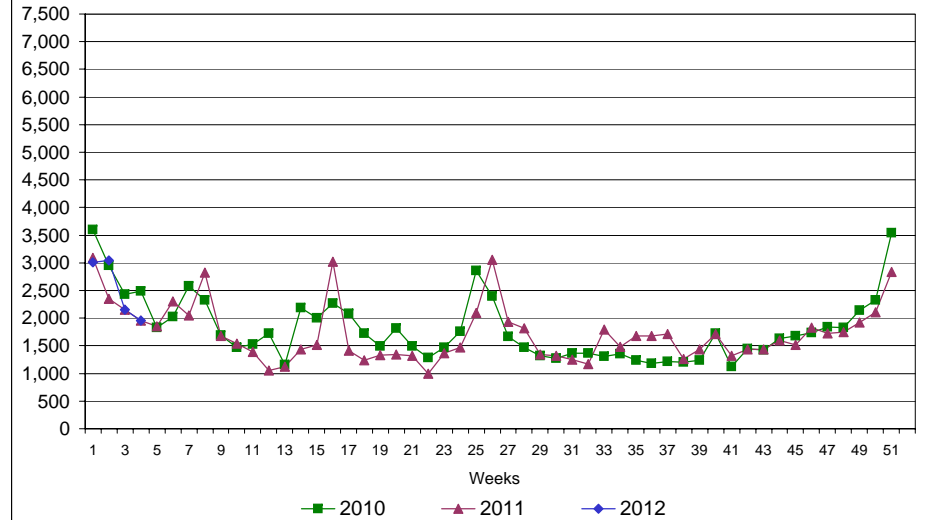
Rhode Island Department of Labor and Training

January 28, 2012

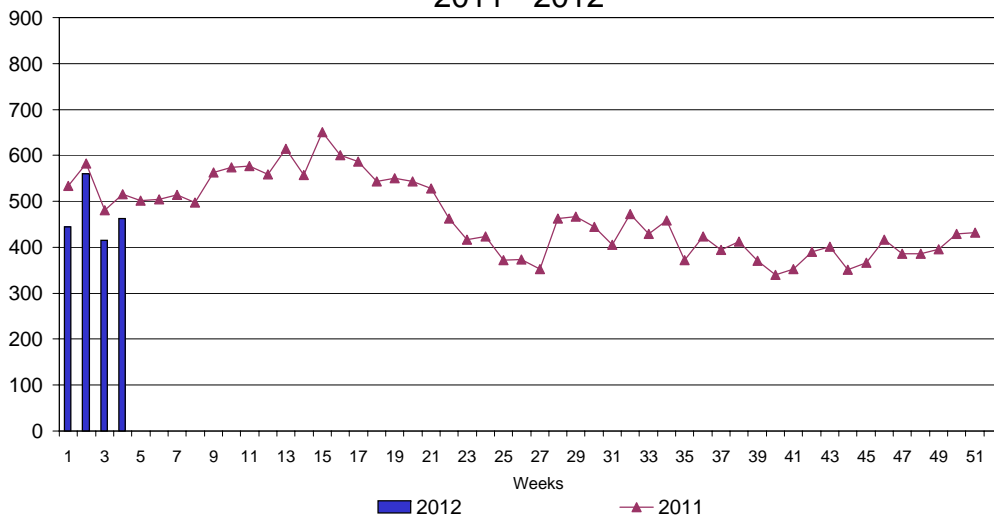
UI Claims Comparison Year to Date



UI Initial Claims 2010 - 2012



UI Exhaustions 2011 - 2012



TDI Claims Comparison Year to Date

