



Rhode Island Department of Labor and Training

Weekly Update of Claims Activity

Week Ending: February 11, 2012

Unemployment Insurance

Initial Claims – 1,795 initial claims were processed during the week ending 2/11/12, an increase of 55 from the previous week, and a decrease of 505 from a year ago.

Continued Claims – 19,244 continued claims were processed during the week of 2/11/12, an increase of 411 from the previous week and a decrease of 2,353 from a year ago.

Workshare – gives employers an alternative to layoffs by allowing employees to work reduced hours and collect a percentage of regular UI benefits to compensate for lost pay. This week, 65 initial claims and 1,191 continued claims were processed. An estimated 20 layoffs were prevented this week, as a result of Workshare.

Emergency Unemployment Compensation 08 – EUC08, which became effective July 6, 2008, provides up to 53 weeks of federally funded benefits to eligible individuals who exhausted their UI claims. This week there were 388 new EUC08 claims processed and 11,728 continued claims processed (4,800 under tier I, 2,981 under tier II, 2,782 under tier III and 1,165 under tier IV).

Extended Benefits – are payable to individuals who have exhausted UI or EUC08 claims. This week, 126 new EB claims and 1,842 continued EB claims were processed.

Exhaustions – 449 individuals exhausted their regular payments this week, an increase of 12 from the previous week and a decrease of 55 from a year ago. There were 237 individuals that exhausted EUC08 and 91 individuals that exhausted EB.

Temporary Disability Insurance

Temporary Disability Insurance – 887 initial claims and 6,903 continued claims were processed for Temporary Disability Insurance. The average weekly TDI payment is \$455 per week. Rhode Island is currently paying an average of 10.8 weeks per new claim.

	Initial Claims			Continued Claims	TOTAL - Initial and Continued Claims			
	Total	New	Additional		Current Week	Previous Week	Year Ago	Two Years Ago
Total - All programs*	2,641	1,743	898	34,599	37,240	36,635	43,524	48,086
UI Claims	1,795	1,148	647	19,244	21,039	20,573	23,897	23,816
Change from:								
Previous Week	55	-29	84	411	466			
Year Ago	-505	-316	-189	-2,353	-2,858			
Two Years Ago	-230	-88	-142	-2,547	-2,777			
EUC08 Claims	606	388	218	11,728	12,334	12,443	14,307	20,350
Extended Benefits	138	126	12	1,842	1,980	1,970	3,325	1,000
Interstate-Liable	37	23	14	594	631	618	699	752
Workshare	65	58	7	1,191	1,256	1,031	1,296	2,168
Workshare Equivalency	20	18	2	278	298	254	323	533
UI Exhaustions	-	-	-	449	449	437	504	571
EUC08 Exhaustions	-	-	-	237	237	221	169	316
EB Exhaustions	-	-	-	91	91	117	169	126
TDI Claims	887	732	155	6,903	7,790	8,430	8,974	8,214
Change from:								
Previous Week	159	127	32	-799	-640			
Year Ago	-321	-287	-34	-863	-1,184			

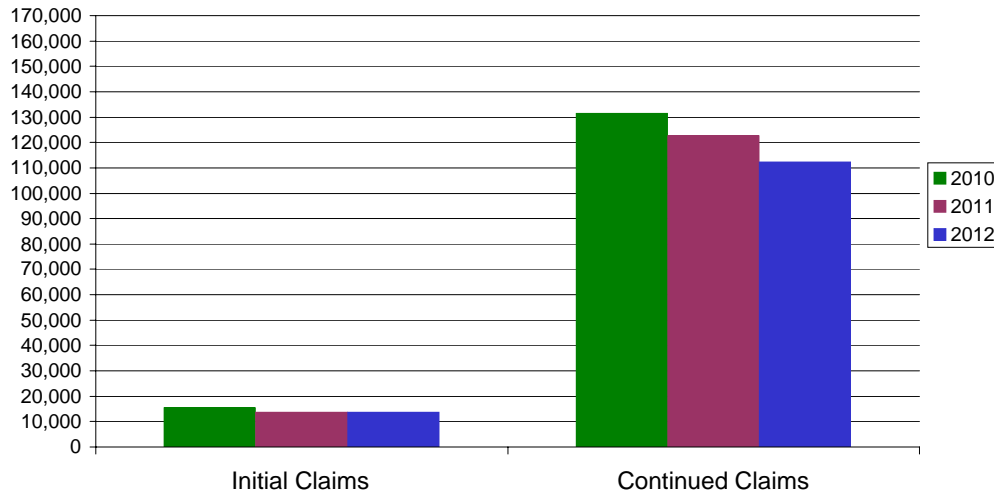
* Includes UI, EUC08, EB, Workshare & Interstate Liable.

Equal Opportunity Employer / Program / Auxiliary aids and services available upon request to individuals with disabilities / TTY via RI Relay 711.

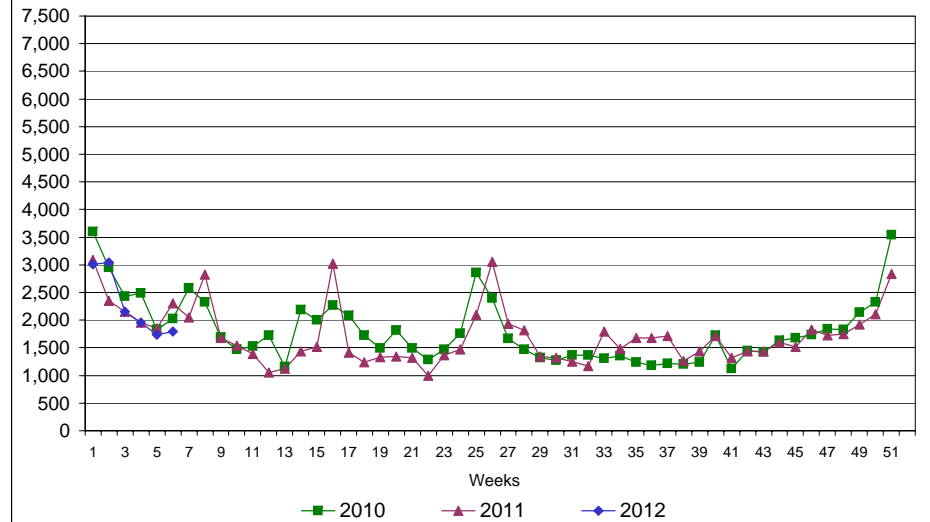
Rhode Island Department of Labor and Training

February 11, 2012

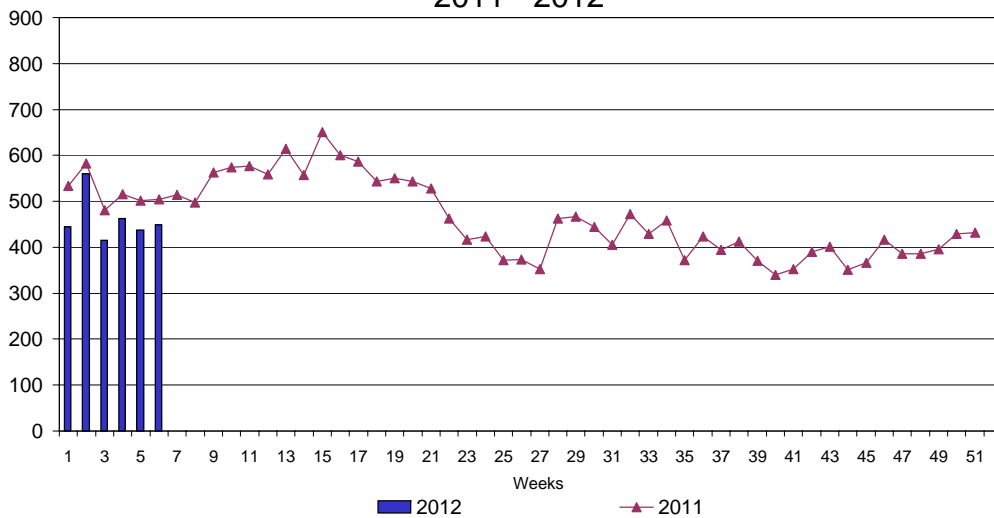
UI Claims Comparison Year to Date



UI Initial Claims 2010 - 2012



UI Exhaustions 2011 - 2012



TDI Claims Comparison Year to Date

