



## Rhode Island Department of Labor and Training

# *Weekly Update of Claims Activity*

*Week Ending: February 25, 2012*

### **Unemployment Insurance**

**Initial Claims** – 2,920 initial claims were processed during the week ending 2/25/12, an increase of 1,290 from the previous week, and an increase of 98 from a year ago. Initial claims are up due to school vacation week. The number of initial claims filed to date is down 1.7 percent below last year and down 9.9 percent from two years ago.

**Continued Claims** – 19,375 continued claims were processed during the week of 2/25/12, a decrease of 344 from the previous week and a decrease of 1,766 from a year ago. The number of continued claims filed to date is down 8.4 percent from last year and down 14.7 percent from two years ago.

**Workshare** – gives employers an alternative to layoffs by allowing employees to work reduced hours and collect a percentage of regular UI benefits to compensate for lost pay. This week, 126 initial claims and 1,595 continued claims were processed. An estimated 32 layoffs were prevented this week, as a result of Workshare.

**Emergency Unemployment Compensation 08** – EUC08, which became effective July 6, 2008, provides up to 53 weeks of federally funded benefits to eligible individuals who exhausted their UI claims. This week there were 314 new EUC08 claims processed and 11,611 continued claims processed (4,863 under tier I, 2,970 under tier II, 2,653 under tier III and 1,125 under tier IV).

**Extended Benefits** – are payable to individuals who have exhausted UI or EUC08 claims. This week, 108 new EB claims and 1,842 continued EB claims were processed.

**Exhaustions** – 444 individuals exhausted their regular payments this week, a decrease of 13 from the previous week and a decrease of 54 from a year ago. There were 193 individuals that exhausted EUC08 and 84 individuals that exhausted EB.

### **Temporary Disability Insurance**

**Temporary Disability Insurance** – 893 initial claims and 7,300 continued claims were processed for Temporary Disability Insurance. The average weekly TDI payment is \$446 per week. Rhode Island is currently paying an average of 10.7 weeks per new claim.

	Initial Claims			Continued Claims	TOTAL - Initial and Continued Claims			
	Total	New	Additional		Current Week	Previous Week	Year Ago	Two Years Ago
<b>Total - All programs*</b>	3,691	1,504	2,187	35,010	38,701	37,629	42,853	50,937
<b>UI Claims</b>	2,920	957	1,963	19,375	22,295	21,349	23,963	26,260
Change from:								
Previous Week	1,290	11	1,279	-344	946			
Year Ago	98	55	43	-1,766	-1,668			
Two Years Ago	593	-110	703	-4,558	-3,965			
<b>EUC08 Claims</b>	498	314	184	11,611	12,109	12,452	14,240	20,244
<b>Extended Benefits</b>	116	108	8	1,842	1,958	2,035	3,001	785
<b>Interstate-Liable</b>	31	18	13	587	618	655	580	692
<b>Workshare</b>	126	107	19	1,595	1,721	1,138	1,069	2,956
<b>Workshare Equivalency</b>	32	25	7	428	460	313	248	725
<b>UI Exhaustions</b>	-	-	-	444	444	457	498	558
<b>EUC08 Exhaustions</b>	-	-	-	193	193	234	148	261
<b>EB Exhaustions</b>	-	-	-	84	84	118	169	121
<b>TDI Claims</b>	893	718	175	7,300	8,193	8,047	8,257	8,853
Change from:								
Previous Week	-102	-89	-13	248	146			
Year Ago	146	95	51	-210	-64			

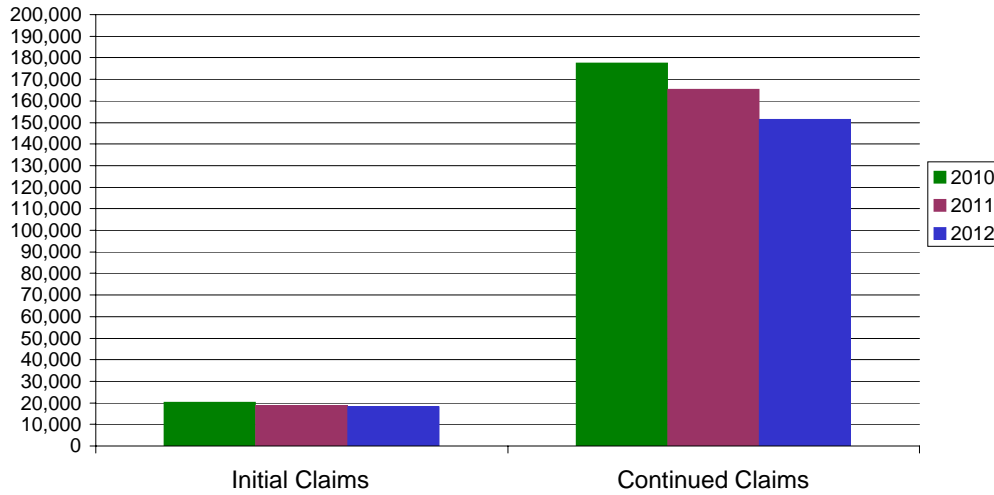
\* Includes UI, EUC08, EB, Workshare & Interstate Liable.

Equal Opportunity Employer / Program / Auxiliary aids and services available upon request to individuals with disabilities / TTY via RI Relay 711.

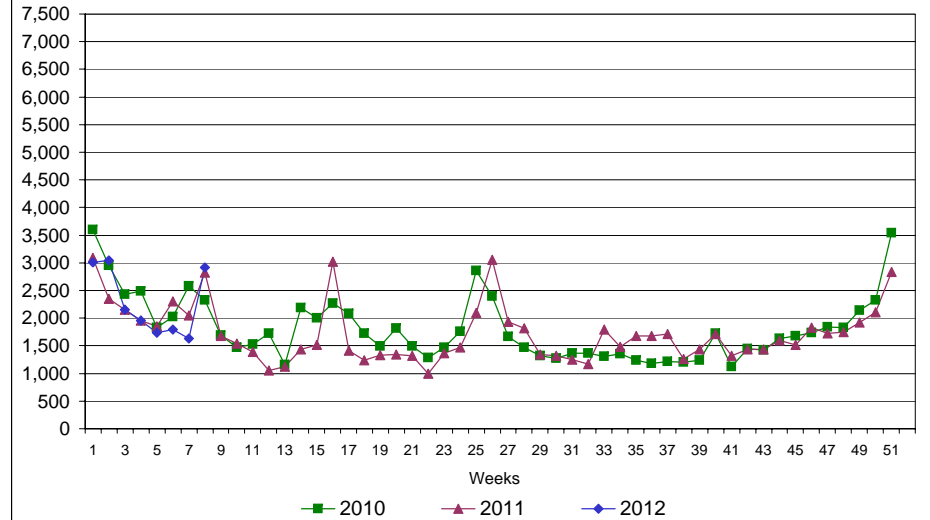
# Rhode Island Department of Labor and Training

## February 25, 2012

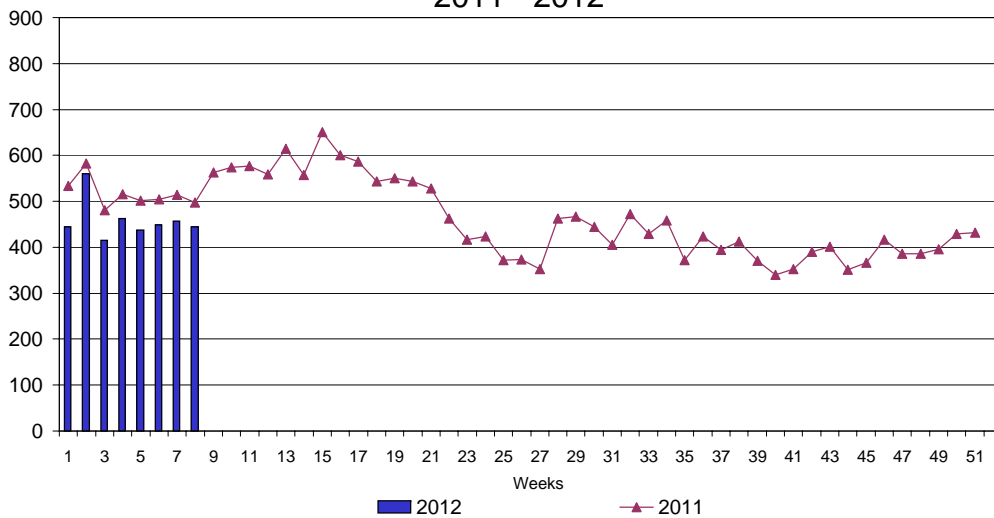
### UI Claims Comparison Year to Date



### UI Initial Claims 2010 - 2012



### UI Exhaustions 2011 - 2012



### TDI Claims Comparison Year to Date

