



Rhode Island Department of Labor and Training

Weekly Update of Claims Activity

Week Ending: March 3, 2012

Unemployment Insurance

Initial Claims – 1,856 initial claims were processed during the week ending 3/3/12, a decrease of 1,064 from the previous week, and an increase of 176 from a year ago. The number of initial claims filed to date is down 0.7 percent below last year and down 8.4 percent from two years ago.

Continued Claims – 21,432 continued claims were processed during the week of 3/3/12, an increase of 2,057 from the previous week and a decrease of 1,643 from a year ago. The number of continued claims filed to date is down 8.2 percent from last year and down 13.8 percent from two years ago.

Workshare – gives employers an alternative to layoffs by allowing employees to work reduced hours and collect a percentage of regular UI benefits to compensate for lost pay. This week, 88 initial claims and 836 continued claims were processed. An estimated 25 layoffs were prevented this week, as a result of Workshare.

Emergency Unemployment Compensation 08 – EUC08, which became effective July 6, 2008, provides up to 53 weeks of federally funded benefits to eligible individuals who exhausted their UI claims. This week there were 422 new EUC08 claims processed and 11,610 continued claims processed (4,851 under tier I, 2,937 under tier II, 2,660 under tier III and 1,162 under tier IV).

Extended Benefits – are payable to individuals who have exhausted UI or EUC08 claims. This week, 147 new EB claims and 1,862 continued EB claims were processed.

Exhaustions – 472 individuals exhausted their regular payments this week, an increase of 28 from the previous week and a decrease of 91 from a year ago. There were 224 individuals that exhausted EUC08 and 92 individuals that exhausted EB.

Temporary Disability Insurance

Temporary Disability Insurance – 1,014 initial claims and 7,359 continued claims were processed for Temporary Disability Insurance. The average weekly TDI payment is \$449 per week. Rhode Island is currently paying an average of 10.7 weeks per new claim.

	Initial Claims			Continued Claims	TOTAL - Initial and Continued Claims			
	Total	New	Additional		Current Week	Previous Week	Year Ago	Two Years Ago
Total - All programs*	2,760	1,562	1,198	36,350	39,110	38,701	44,557	49,430
UI Claims	1,856	907	949	21,432	23,288	22,295	24,755	24,769
Change from:								
Previous Week	-1,064	-50	-1,014	2,057	993			
Year Ago	176	-2	178	-1,643	-1,467			
Two Years Ago	168	112	56	-1,649	-1,481			
EUC08 Claims	628	422	206	11,610	12,238	12,109	14,492	20,205
Extended Benefits	158	147	11	1,862	2,020	1,958	2,829	699
Interstate-Liable	30	13	17	610	640	618	675	803
Workshare	88	73	15	836	924	1,721	1,806	2,954
Workshare Equivalency	25	21	4	220	245	460	432	729
UI Exhaustions	-	-	-	472	472	444	563	509
EUC08 Exhaustions	-	-	-	224	224	193	158	337
EB Exhaustions	-	-	-	92	92	84	194	116
TDI Claims	1,014	809	205	7,359	8,373	8,193	8,770	8,434
Change from:								
Previous Week	121	91	30	59	180			
Year Ago	163	108	55	-560	-397			

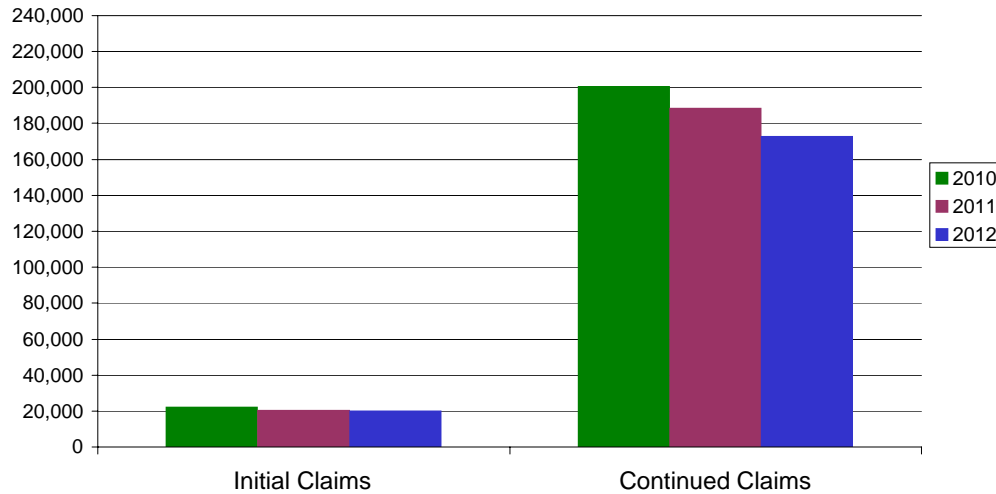
* Includes UI, EUC08, EB, Workshare & Interstate Liable.

Equal Opportunity Employer / Program / Auxiliary aids and services available upon request to individuals with disabilities / TTY via RI Relay 711.

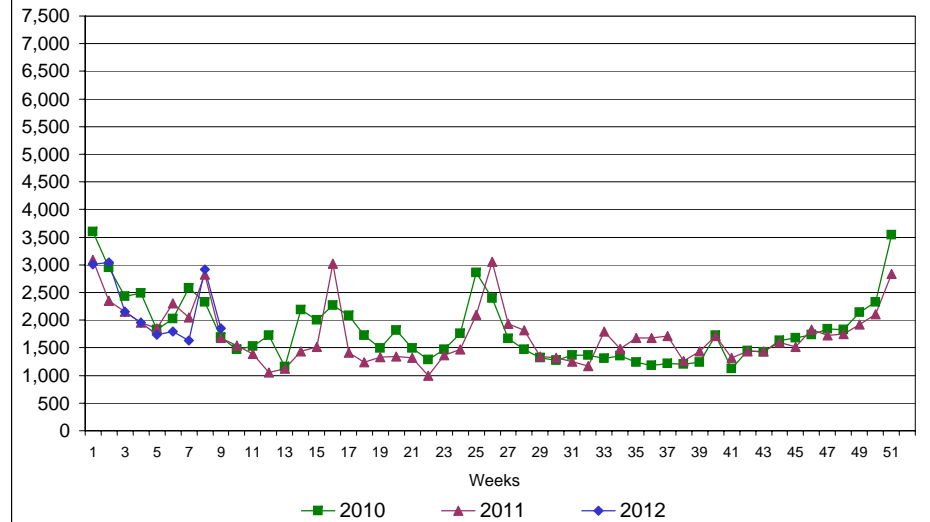
Rhode Island Department of Labor and Training

March 3, 2012

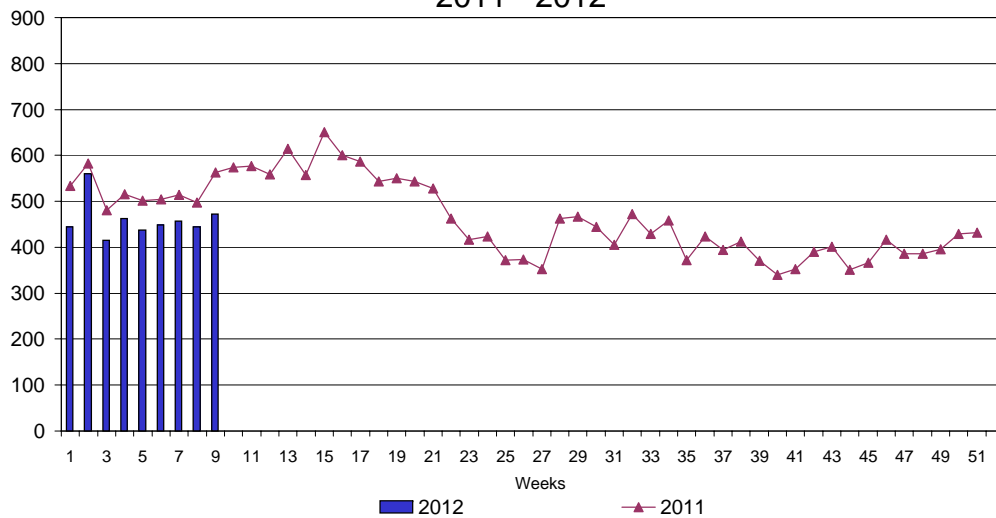
UI Claims Comparison Year to Date



UI Initial Claims 2010 - 2012



UI Exhaustions 2011 - 2012



TDI Claims Comparison Year to Date

