



Rhode Island Department of Labor and Training

Weekly Update of Claims Activity

Week Ending: March 17, 2012

Unemployment Insurance

Initial Claims – 1,302 initial claims were processed during the week ending 3/17/12, a decrease of 176 from the previous week, and a decrease of 89 from a year ago. The number of initial claims filed to date is down 1.3 percent below last year and down 8.2 percent from two years ago.

Continued Claims – 18,643 continued claims were processed during the week of 3/17/12, a decrease of 267 from the previous week and a decrease of 1,657 from a year ago. The number of continued claims filed to date is down 8.4 percent from last year and down 14.6 percent from two years ago.

Workshare – gives employers an alternative to layoffs by allowing employees to work reduced hours and collect a percentage of regular UI benefits to compensate for lost pay. This week, 58 initial claims and 786 continued claims were processed. An estimated 10 layoffs were prevented this week, as a result of Workshare.

Emergency Unemployment Compensation 08 – EUC08, which became effective July 6, 2008, provides up to 53 weeks of federally funded benefits to eligible individuals who exhausted their UI claims. This week there were 427 new EUC08 claims processed and 11,591 continued claims processed (4,926 under tier I, 2,958 under tier II, 2,600 under tier III and 1,107 under tier IV).

Extended Benefits – are payable to individuals who have exhausted UI or EUC08 claims. This week, 122 new EB claims and 1,873 continued EB claims were processed.

Exhaustions – 565 individuals exhausted their regular payments this week, an increase of 64 from the previous week and a decrease of 12 from a year ago. There were 185 individuals that exhausted EUC08 and 110 individuals that exhausted EB.

Temporary Disability Insurance

Temporary Disability Insurance – 768 initial claims and 7,045 continued claims were processed for Temporary Disability Insurance. The average weekly TDI payment is \$441 per week. Rhode Island is currently paying an average of 10.7 weeks per new claim.

	Initial Claims			Continued Claims	TOTAL - Initial and Continued Claims			
	Total	New	Additional		Current Week	Previous Week	Year Ago	Two Years Ago
Total - All programs*	2,151	1,335	816	33,468	35,619	37,255	42,309	49,953
UI Claims	1,302	716	586	18,643	19,945	20,388	21,691	24,088
Change from:								
Previous Week	-176	-212	36	-267	-443			
Year Ago	-89	-70	-19	-1,657	-1,746			
Two Years Ago	-223	-185	-38	-3,920	-4,143			
EUC08 Claims	629	427	202	11,591	12,220	12,456	14,694	21,698
Extended Benefits	130	122	8	1,873	2,003	2,026	2,620	697
Interstate-Liable	32	14	18	575	607	586	582	690
Workshare	58	56	2	786	844	1,799	2,722	2,780
Workshare Equivalency	10	10	0	263	273	465	774	725
UI Exhaustions	-	-	-	565	565	501	577	620
EUC08 Exhaustions	-	-	-	185	185	204	304	232
EB Exhaustions	-	-	-	110	110	109	106	131
TDI Claims	768	629	139	7,045	7,813	8,969	8,967	8,439
Change from:								
Previous Week	-78	-63	-15	-1,078	-1,156			
Year Ago	-93	-77	-16	-1,061	-1,154			

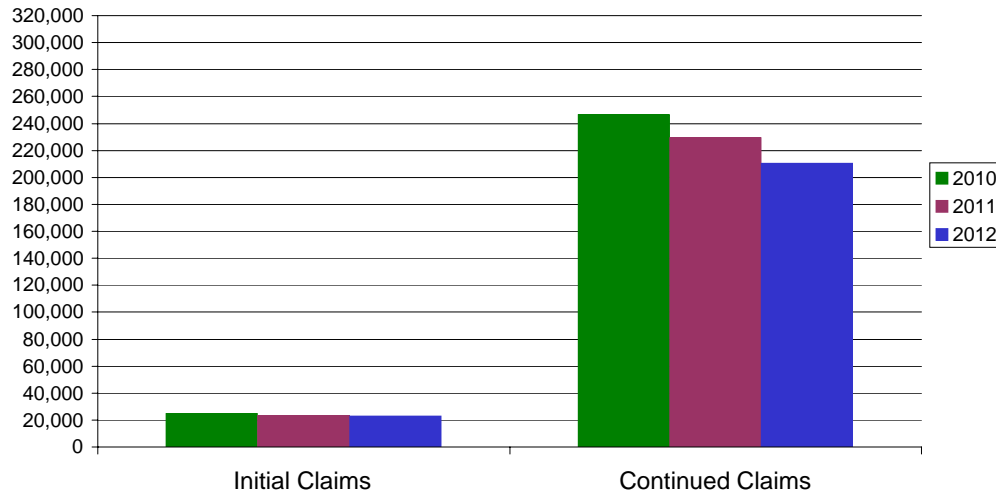
* Includes UI, EUC08, EB, Workshare & Interstate Liable.

Equal Opportunity Employer / Program / Auxiliary aids and services available upon request to individuals with disabilities / TTY via RI Relay 711.

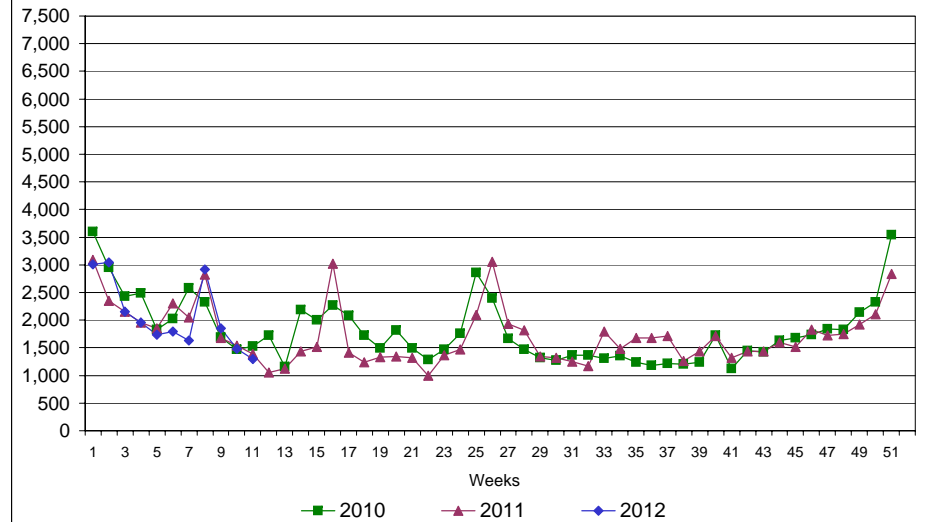
Rhode Island Department of Labor and Training

March 17, 2012

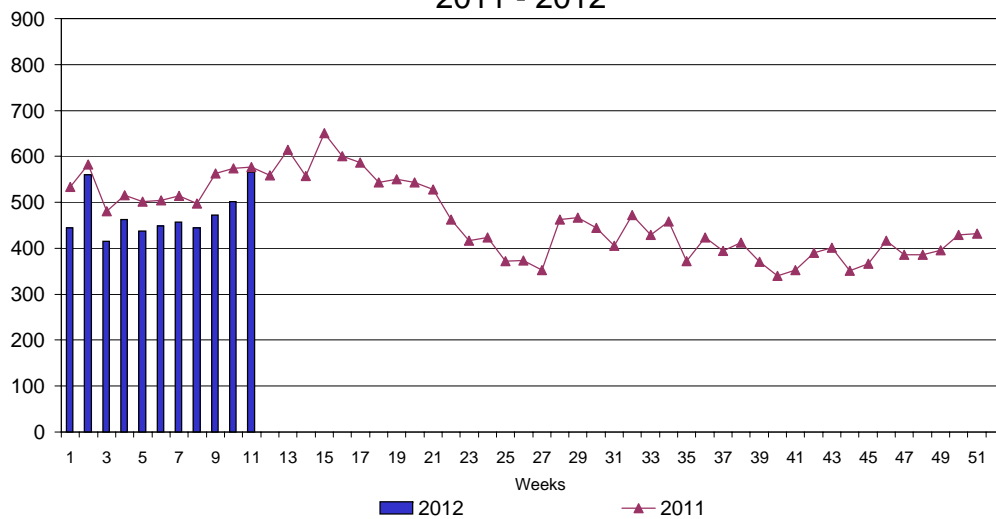
UI Claims Comparison Year to Date



UI Initial Claims 2010 - 2012



UI Exhaustions 2011 - 2012



TDI Claims Comparison Year to Date

