



Rhode Island Department of Labor and Training

Weekly Update of Claims Activity

Week Ending: April 7, 2012

Unemployment Insurance

Initial Claims – 1,368 initial claims were processed during the week ending 4/7/12, an increase of 241 from the previous week, and a decrease of 67 from a year ago. The number of initial claims filed to date is down 0.5 percent below last year and down 11.1 percent from two years ago.

Continued Claims – 16,029 continued claims were processed during the week of 4/7/12, a decrease of 884 from the previous week and a decrease of 1,631 from a year ago. The number of continued claims filed to date is down 8.8 percent from last year and down 15.3 percent from two years ago.

Workshare – gives employers an alternative to layoffs by allowing employees to work reduced hours and collect a percentage of regular UI benefits to compensate for lost pay. This week, 63 initial claims and 1,331 continued claims were processed. An estimated 20 layoffs were prevented this week, as a result of Workshare.

Emergency Unemployment Compensation 08 – EUC08, which became effective July 6, 2008, provides up to 53 weeks of federally funded benefits to eligible individuals who exhausted their UI claims. This week there were 390 new EUC08 claims processed and 11,317 continued claims processed (4,942 under tier I, 2,841 under tier II, 2,357 under tier III and 1,177 under tier IV).

Extended Benefits – are payable to individuals who have exhausted UI or EUC08 claims. This week, 93 new EB claims and 1,867 continued EB claims were processed.

Exhaustions – 527 individuals exhausted their regular payments this week, a decrease of 13 from the previous week and a decrease of 30 from a year ago. There were 191 individuals that exhausted EUC08 and 107 individuals that exhausted EB.

Temporary Disability Insurance

Temporary Disability Insurance – 844 initial claims and 7,290 continued claims were processed for Temporary Disability Insurance. The average weekly TDI payment is \$446 per week. Rhode Island is currently paying an average of 10.7 weeks per new claim.

	Initial Claims			Continued Claims	TOTAL - Initial and Continued Claims			
	Total	New	Additional		Current Week	Previous Week	Year Ago	Two Years Ago
Total - All programs*	2,122	1,358	764	31,091	33,213	33,515	38,199	44,842
UI Claims	1,368	815	553	16,029	17,397	18,040	19,095	21,840
Change from:								
Previous Week	241	205	36	-884	-643			
Year Ago	-67	-91	24	-1,631	-1,698			
Two Years Ago	-815	-656	-159	-3,628	-4,443			
EUC08 Claims	558	390	168	11,317	11,875	12,112	14,605	19,452
Extended Benefits	102	93	9	1,867	1,969	2,018	2,624	878
Interstate-Liable	31	15	16	547	578	596	531	687
Workshare	63	45	18	1,331	1,394	749	1,344	1,985
Workshare Equivalency	20	15	5	337	357	198	391	474
UI Exhaustions	-	-	-	527	527	540	557	672
EUC08 Exhaustions	-	-	-	191	191	213	265	617
EB Exhaustions	-	-	-	107	107	75	91	28
TDI Claims	844	696	148	7,290	8,134	8,016	8,397	8,435
Change from:								
Previous Week	95	112	-17	23	118			
Year Ago	57	64	-7	-320	-263			

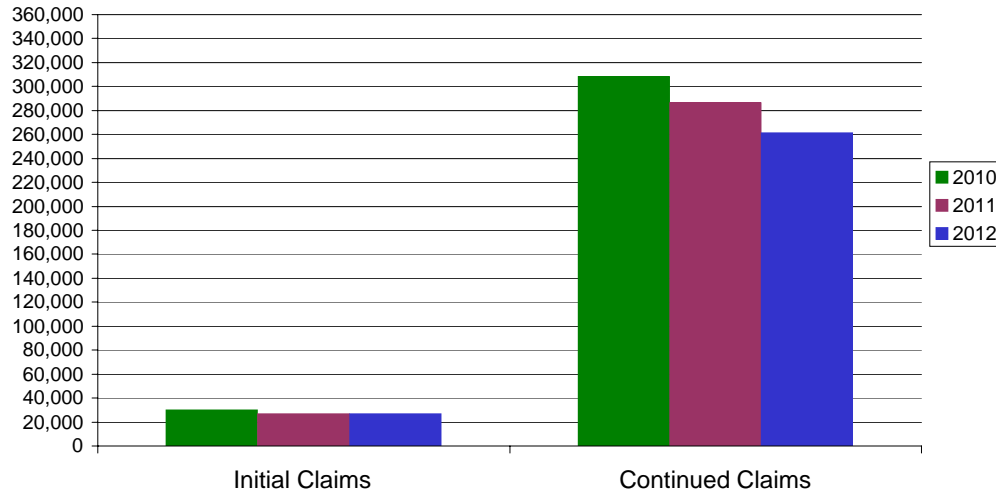
* Includes UI, EUC08, EB, Workshare & Interstate Liable.

Equal Opportunity Employer / Program / Auxiliary aids and services available upon request to individuals with disabilities / TTY via RI Relay 711.

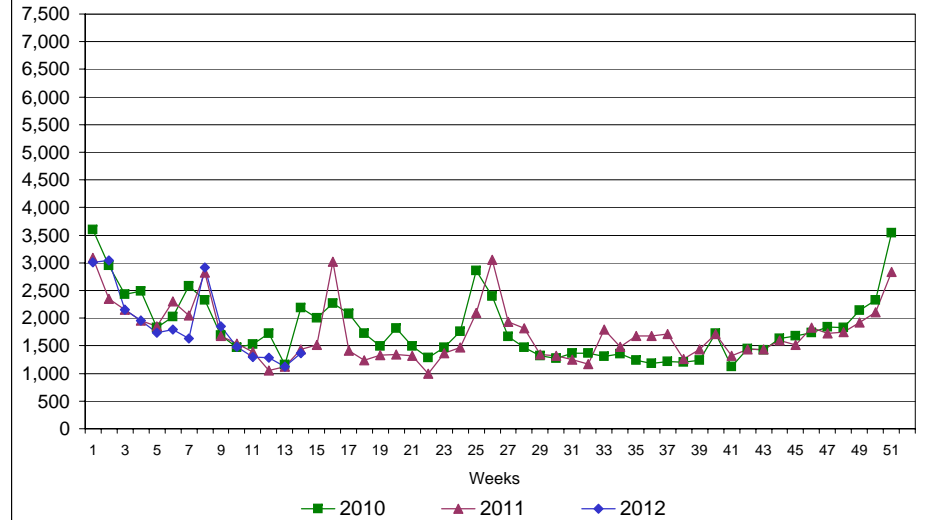
Rhode Island Department of Labor and Training

April 7, 2012

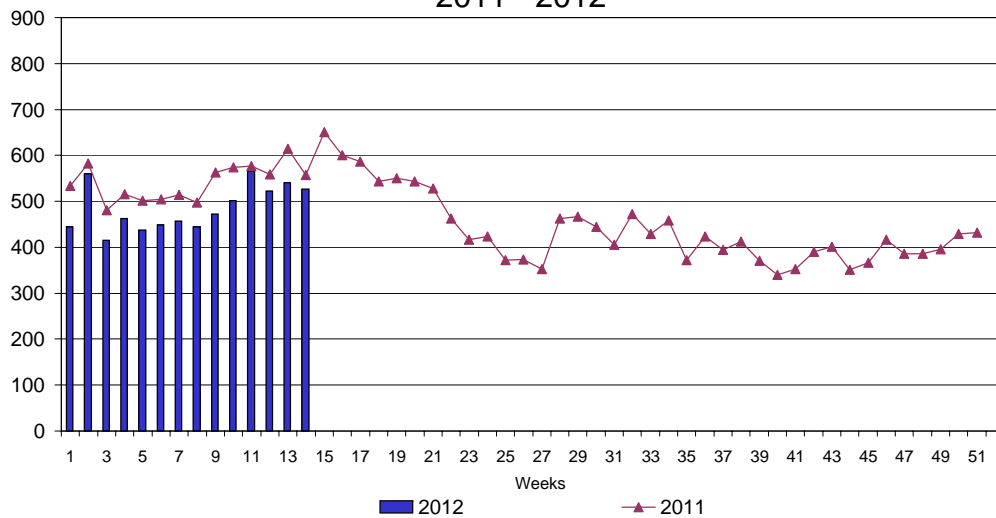
UI Claims Comparison Year to Date



UI Initial Claims 2010 - 2012



UI Exhaustions 2011 - 2012



TDI Claims Comparison Year to Date

