



Rhode Island Department of Labor and Training

Weekly Update of Claims Activity

Week Ending: April 14, 2012

Unemployment Insurance

Initial Claims – 1,419 initial claims were processed during the week ending 4/14/12, an increase of 51 from the previous week, and a decrease of 96 from a year ago. The number of initial claims filed to date is down 0.8 percent below last year and down 12.3 percent from two years ago.

Continued Claims – 14,819 continued claims were processed during the week of 4/14/12, a decrease of 1,210 from the previous week and a decrease of 1,983 from a year ago. The number of continued claims filed to date is down 8.9 percent from last year and down 15.5 percent from two years ago.

Workshare – gives employers an alternative to layoffs by allowing employees to work reduced hours and collect a percentage of regular UI benefits to compensate for lost pay. This week, 43 initial claims and 890 continued claims were processed. An estimated 11 layoffs were prevented this week, as a result of Workshare.

Emergency Unemployment Compensation 08 – EUC08, which became effective July 6, 2008, provides up to 53 weeks of federally funded benefits to eligible individuals who exhausted their UI claims. This week there were 452 new EUC08 claims processed and 11,040 continued claims processed (4,812 under tier I, 2,744 under tier II, 2,316 under tier III and 1,168 under tier IV).

Extended Benefits – are payable to individuals who have exhausted UI or EUC08 claims. This week, 95 new EB claims and 1,838 continued EB claims were processed.

Exhaustions – 598 individuals exhausted their regular payments this week, an increase of 71 from the previous week and a decrease of 52 from a year ago. There were 175 individuals that exhausted EUC08 and 93 individuals that exhausted EB.

Temporary Disability Insurance

Temporary Disability Insurance – 913 initial claims and 7,187 continued claims were processed for Temporary Disability Insurance. The average weekly TDI payment is \$456 per week. Rhode Island is currently paying an average of 10.6 weeks per new claim.

	Initial Claims			Continued Claims	TOTAL - Initial and Continued Claims			
	Total	New	Additional		Current Week	Previous Week	Year Ago	Two Years Ago
Total - All programs*	2,255	1,321	934	29,085	31,340	33,213	37,757	44,330
UI Claims	1,419	714	705	14,819	16,238	17,397	18,317	20,181
Change from:								
Previous Week	51	-101	152	-1,210	-1,159			
Year Ago	-96	-77	-19	-1,983	-2,079			
Two Years Ago	-585	-725	140	-3,358	-3,943			
EUC08 Claims	653	452	201	11,040	11,693	11,875	14,480	18,113
Extended Benefits	106	95	11	1,838	1,944	1,969	2,510	1,378
Interstate-Liable	34	24	10	498	532	578	545	595
Workshare	43	36	7	890	933	1,394	1,905	4,063
Workshare Equivalency	11	9	2	222	233	357	499	990
UI Exhaustions	-	-	-	598	598	527	650	691
EUC08 Exhaustions	-	-	-	175	175	191	258	526
EB Exhaustions	-	-	-	93	93	107	88	19
TDI Claims	913	755	158	7,187	8,100	8,134	8,226	7,681
Change from:								
Previous Week	69	59	10	-103	-34			
Year Ago	86	75	11	-212	-126			

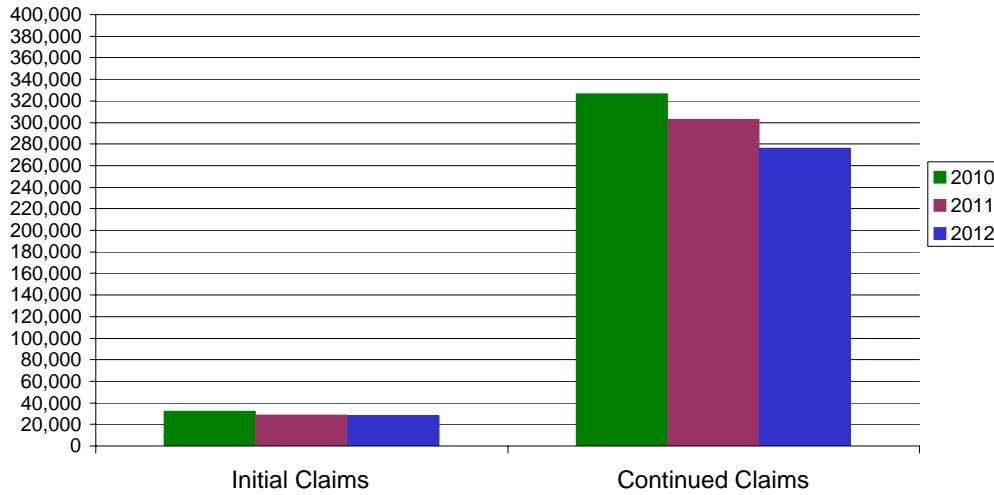
* Includes UI, EUC08, EB, Workshare & Interstate Liable.

Equal Opportunity Employer / Program / Auxiliary aids and services available upon request to individuals with disabilities / TTY via RI Relay 711.

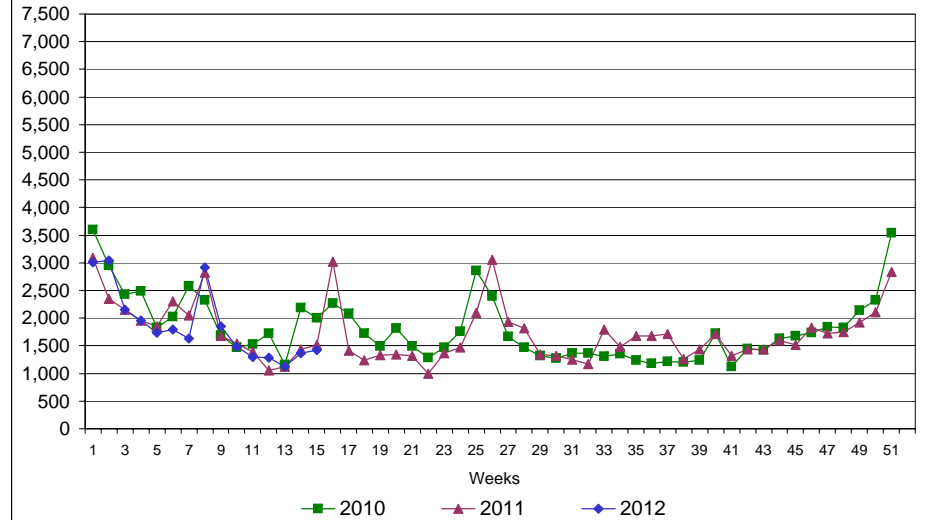
Rhode Island Department of Labor and Training

April 14, 2012

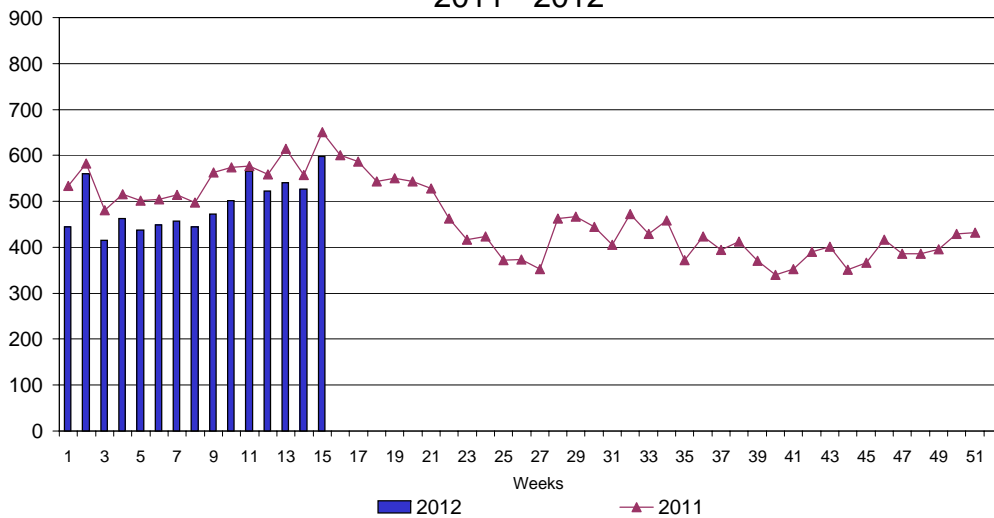
UI Claims Comparison Year to Date



UI Initial Claims 2010 - 2012



UI Exhaustions 2011 - 2012



TDI Claims Comparison Year to Date

