



Rhode Island Department of Labor and Training

Weekly Update of Claims Activity

Week Ending: April 28, 2012

Unemployment Insurance

Initial Claims – 1,936 initial claims were processed during the week ending 4/28/12, a decrease of 665 from the previous week, and an increase of 529 from a year ago. The number of initial claims filed to date is down 0.4 percent below last year and down 10.3 percent from two years ago.

Continued Claims – 15,551 continued claims were processed during the week of 4/28/12, an increase of 1,298 from the previous week and a decrease of 1,576 from a year ago. The number of continued claims filed to date is down 9.1 percent from last year and down 16.1 percent from two years ago.

Workshare – gives employers an alternative to layoffs by allowing employees to work reduced hours and collect a percentage of regular UI benefits to compensate for lost pay. This week, 27 initial claims and 586 continued claims were processed. An estimated 9 layoffs were prevented this week, as a result of Workshare.

Emergency Unemployment Compensation 08 – EUC08, which became effective July 6, 2008, provides up to 53 weeks of federally funded benefits to eligible individuals who exhausted their UI claims. This week there were 366 new EUC08 claims processed and 10,918 continued claims processed (4,900 under tier I, 2,660 under tier II, 2,229 under tier III and 1,129 under tier IV).

Extended Benefits – are payable to individuals who have exhausted UI or EUC08 claims. This week, 116 new EB claims and 1,824 continued EB claims were processed.

Exhaustions – 457 individuals exhausted their regular payments this week, a decrease of 44 from the previous week and a decrease of 130 from a year ago. There were 224 individuals that exhausted EUC08 and 67 individuals that exhausted EB.

Temporary Disability Insurance

Temporary Disability Insurance – 983 initial claims and 6,477 continued claims were processed for Temporary Disability Insurance. The average weekly TDI payment is \$441 per week. Rhode Island is currently paying an average of 10.6 weeks per new claim.

	Initial Claims			Continued Claims	TOTAL - Initial and Continued Claims			
	Total	New	Additional		Current Week	Previous Week	Year Ago	Two Years Ago
Total - All programs*	2,695	1,411	1,284	29,344	32,039	32,608	37,693	44,592
UI Claims	1,936	897	1,039	15,551	17,487	16,844	18,534	21,361
Change from:								
Previous Week	-655	62	-717	1,298	643			
Year Ago	529	151	378	-1,576	-1,047			
Two Years Ago	-142	-143	1	-3,732	-3,874			
EUC08 Claims	576	366	210	10,918	11,494	11,631	14,776	18,345
Extended Benefits	126	116	10	1,824	1,950	1,947	2,338	1,032
Interstate-Liable	30	13	17	465	495	523	568	525
Workshare	27	19	8	586	613	1,663	1,477	3,329
Workshare Equivalency	9	4	5	162	171	457	381	743
UI Exhaustions	-	-	-	457	457	501	587	636
EUC08 Exhaustions	-	-	-	224	224	206	179	432
EB Exhaustions	-	-	-	67	67	101	339	20
TDI Claims	983	824	159	6,477	7,460	6,912	7,921	8,443
Change from:								
Previous Week	483	418	65	65	548			
Year Ago	77	72	5	-538	-461			

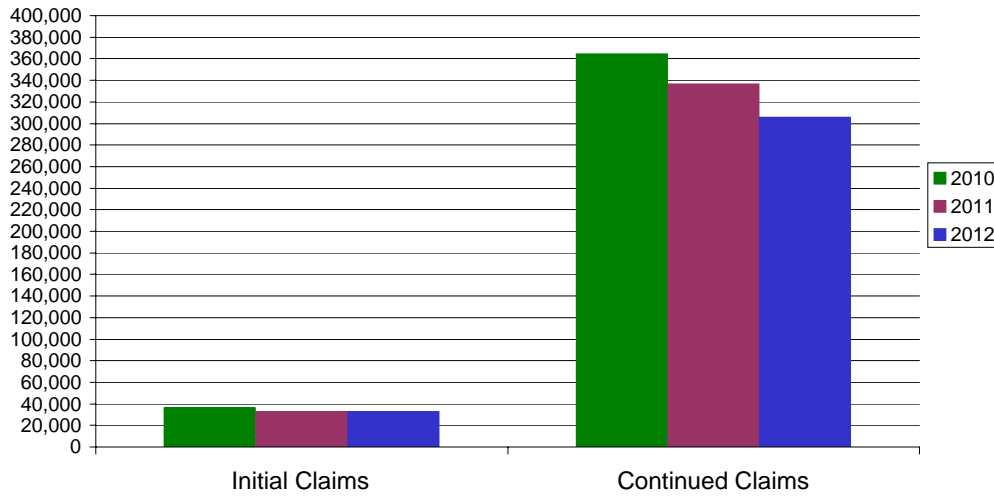
* Includes UI, EUC08, EB, Workshare & Interstate Liable.

Equal Opportunity Employer / Program / Auxiliary aids and services available upon request to individuals with disabilities / TTY via RI Relay 711.

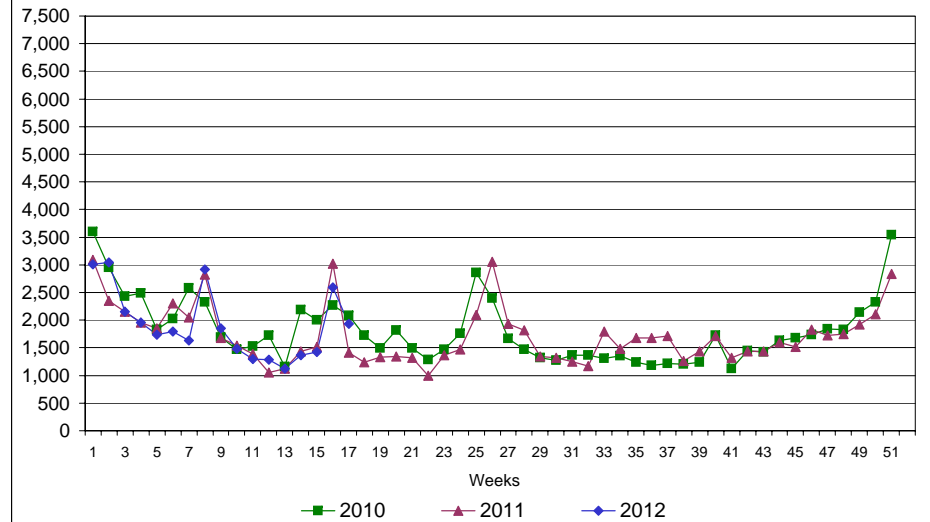
Rhode Island Department of Labor and Training

April 28, 2012

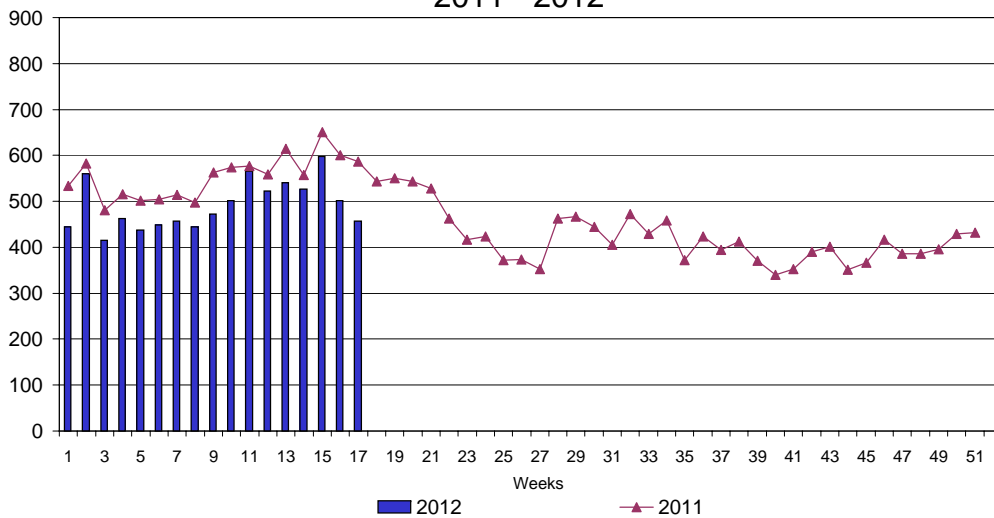
UI Claims Comparison Year to Date



UI Initial Claims 2010 - 2012



UI Exhaustions 2011 - 2012



TDI Claims Comparison Year to Date

