



Rhode Island Department of Labor and Training

Weekly Update of Claims Activity

Week Ending: May 12, 2012

Unemployment Insurance

Initial Claims – 1,257 initial claims were processed during the week ending 5/12/12, a decrease of 74 from the previous week, and a decrease of 75 from a year ago. The number of initial claims filed to date is down 0.3 percent below last year and down 11.0 percent from two years ago.

Continued Claims – 12,786 continued claims were processed during the week of 5/12/12, a decrease of 551 from the previous week and a decrease of 1,198 from a year ago. The number of continued claims filed to date is down 9.1 percent from last year and down 17.0 percent from two years ago.

Workshare – gives employers an alternative to layoffs by allowing employees to work reduced hours and collect a percentage of regular UI benefits to compensate for lost pay. This week, 32 initial claims and 1,056 continued claims were processed. An estimated 8 layoffs were prevented this week, as a result of Workshare.

Emergency Unemployment Compensation 08 – EUC08, which became effective July 6, 2008, provides up to 53 weeks of federally funded benefits to eligible individuals who exhausted their UI claims. This week there were 414 new EUC08 claims processed and 10,684 continued claims processed (4,855 under tier I, 2,638 under tier II, 2,180 under tier III and 1,011 under tier IV).

Extended Benefits – are payable to individuals who have exhausted UI or EUC08 claims. This week, 100 new EB claims and 1,875 continued EB claims were processed.

Exhaustions – 484 individuals exhausted their regular payments this week, a decrease of 14 from the previous week and a decrease of 67 from a year ago. There were 208 individuals that exhausted EUC08 and 65 individuals that exhausted EB.

Temporary Disability Insurance

Temporary Disability Insurance – 707 initial claims and 7,231 continued claims were processed for Temporary Disability Insurance. The average weekly TDI payment is \$445 per week. Rhode Island is currently paying an average of 10.7 weeks per new claim.

	Initial Claims			Continued Claims	TOTAL - Initial and Continued Claims			
	Total	New	Additional		Current Week	Previous Week	Year Ago	Two Years Ago
Total - All programs*	2,007	1,239	768	26,844	28,851	30,159	34,030	41,557
UI Claims	1,257	685	572	12,786	14,043	14,668	15,316	18,607
Change from:								
Previous Week	-74	-69	-5	-551	-625			
Year Ago	-75	-91	16	-1,198	-1,273			
Two Years Ago	-234	-218	-16	-4,330	-4,564			
EUC08 Claims	590	414	176	10,684	11,274	11,472	15,037	18,080
Extended Benefits	107	100	7	1,875	1,982	1,968	1,739	1,371
Interstate-Liable	21	13	8	443	464	495	546	566
Workshare	32	27	5	1,056	1,088	1,556	1,392	2,933
Workshare Equivalency	8	7	1	318	326	393	428	723
UI Exhaustions	-	-	-	484	484	498	551	586
EUC08 Exhaustions	-	-	-	208	208	240	206	336
EB Exhaustions	-	-	-	65	65	64	149	18
TDI Claims	707	577	130	7,231	7,938	9,350	7,759	8,626
Change from:								
Previous Week	-106	-83	-23	-1,306	-1,412			
Year Ago	19	21	-2	160	179			

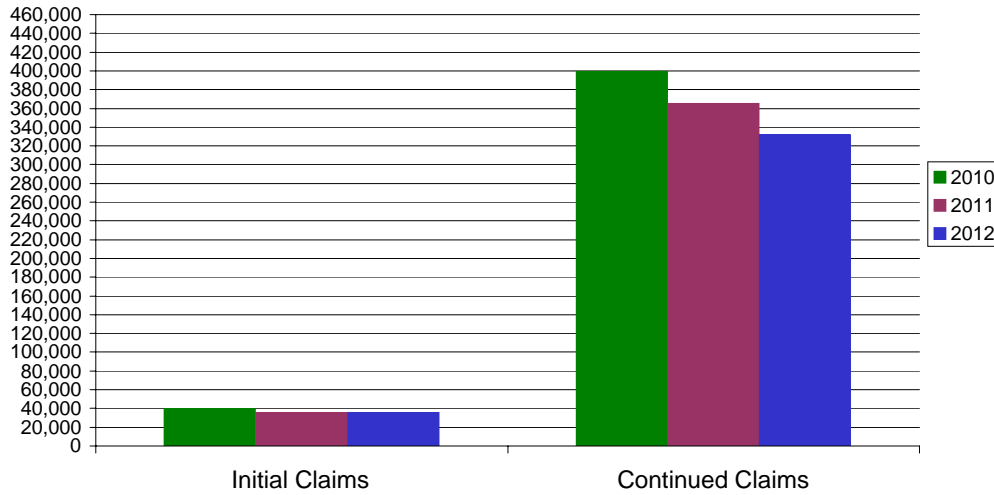
* Includes UI, EUC08, EB, Workshare & Interstate Liable.

Equal Opportunity Employer / Program / Auxiliary aids and services available upon request to individuals with disabilities / TTY via RI Relay 711.

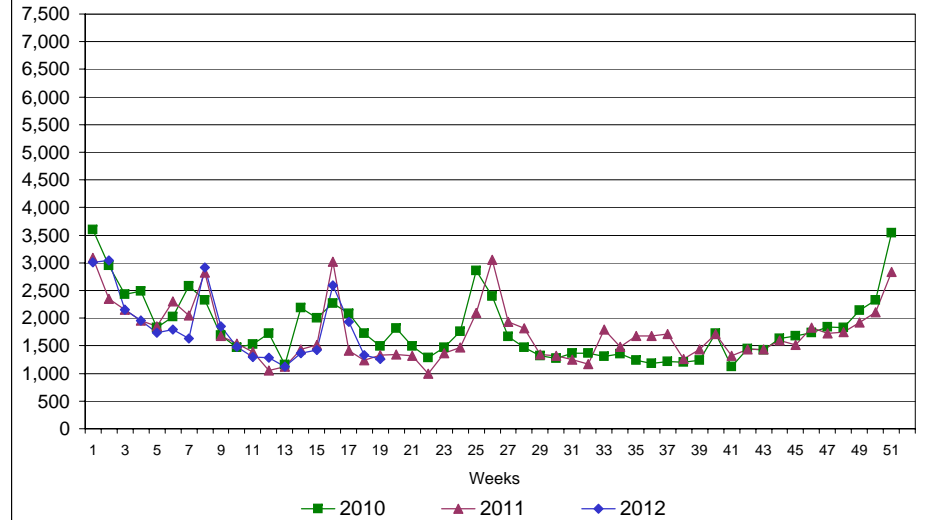
Rhode Island Department of Labor and Training

May 12, 2012

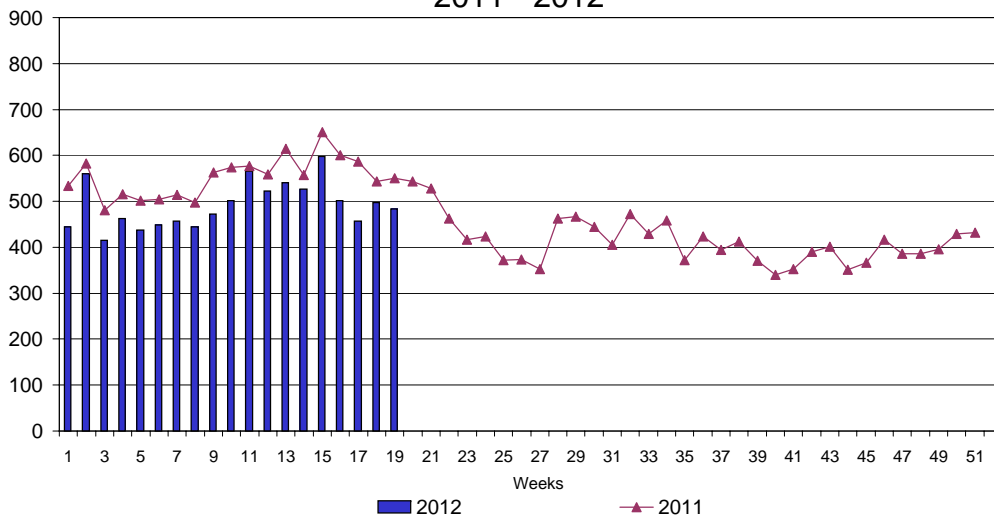
UI Claims Comparison Year to Date



UI Initial Claims 2010 - 2012



UI Exhaustions 2011 - 2012



TDI Claims Comparison Year to Date

