



Rhode Island Department of Labor and Training

Weekly Update of Claims Activity

Week Ending: May 19, 2012

Unemployment Insurance

Initial Claims – 1,351 initial claims were processed during the week ending 5/19/12, an increase of 94 from the previous week, and an increase of 3 from a year ago. The number of initial claims filed to date is down 0.3 percent below last year and down 11.7 percent from two years ago.

Continued Claims – 12,641 continued claims were processed during the week of 5/19/12, a decrease of 145 from the previous week and a decrease of 1,152 from a year ago. The number of continued claims filed to date is down 9.1 percent from last year and down 17.3 percent from two years ago.

Workshare – gives employers an alternative to layoffs by allowing employees to work reduced hours and collect a percentage of regular UI benefits to compensate for lost pay. This week, 28 initial claims and 1,375 continued claims were processed. An estimated 9 layoffs were prevented this week, as a result of Workshare.

Emergency Unemployment Compensation 08 – EUC08, which became effective July 6, 2008, provides up to 53 weeks of federally funded benefits to eligible individuals who exhausted their UI claims. This week there were 371 new EUC08 claims processed and 10,595 continued claims processed (4,866 under tier I, 2,591 under tier II, 2,142 under tier III and 996 under tier IV).

Extended Benefits – are payable to individuals who have exhausted UI or EUC08 claims. This week, 109 new EB claims and 1,865 continued EB claims were processed.

Exhaustions – 478 individuals exhausted their regular payments this week, a decrease of 6 from the previous week and a decrease of 65 from a year ago. There were 158 individuals that exhausted EUC08 and 93 individuals that exhausted EB.

Temporary Disability Insurance

Temporary Disability Insurance – 888 initial claims and 7,751 continued claims were processed for Temporary Disability Insurance. The average weekly TDI payment is \$443 per week. Rhode Island is currently paying an average of 10.6 weeks per new claim.

	Initial Claims			Continued Claims	TOTAL - Initial and Continued Claims			
	Total	New	Additional		Current Week	Previous Week	Year Ago	Two Years Ago
Total - All programs*	2,101	1,283	818	26,927	29,028	28,851	33,542	41,478
UI Claims	1,351	765	586	12,641	13,992	14,043	15,141	18,566
Change from:								
Previous Week	94	80	14	-145	-51			
Year Ago	3	10	-7	-1,152	-1,149			
Two Years Ago	-466	-323	-143	-4,108	-4,574			
EUC08 Claims	569	371	198	10,595	11,164	11,274	15,018	18,190
Extended Benefits	119	109	10	1,865	1,984	1,982	1,701	1,548
Interstate-Liable	34	18	16	451	485	464	521	517
Workshare	28	20	8	1,375	1,403	1,088	1,161	2,657
Workshare Equivalency	9	6	3	338	347	326	301	635
UI Exhaustions	-	-	-	478	478	484	543	588
EUC08 Exhaustions	-	-	-	158	158	208	242	369
EB Exhaustions	-	-	-	93	93	65	109	32
TDI Claims	888	734	154	7,751	8,639	7,938	8,996	8,389
Change from:								
Previous Week	181	157	24	520	701			
Year Ago	59	64	-5	-416	-357			

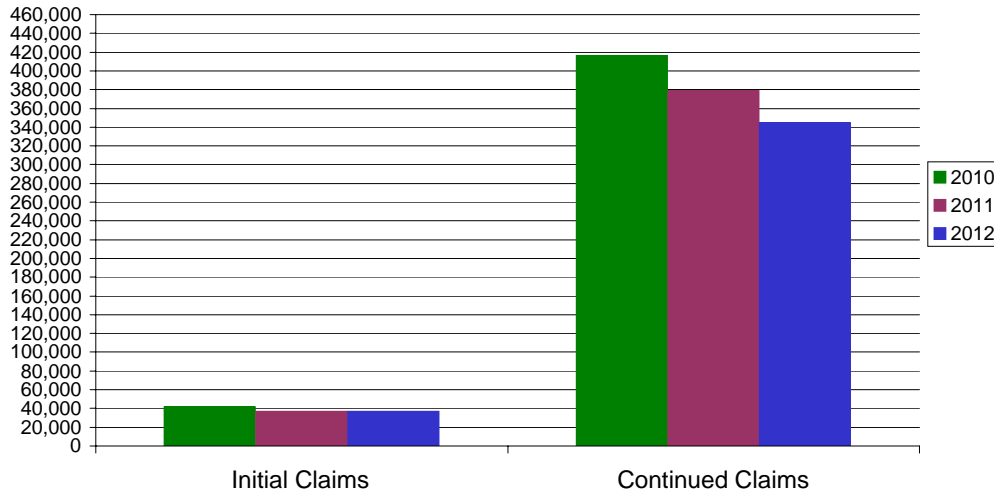
* Includes UI, EUC08, EB, Workshare & Interstate Liable.

Equal Opportunity Employer / Program / Auxiliary aids and services available upon request to individuals with disabilities / TTY via RI Relay 711.

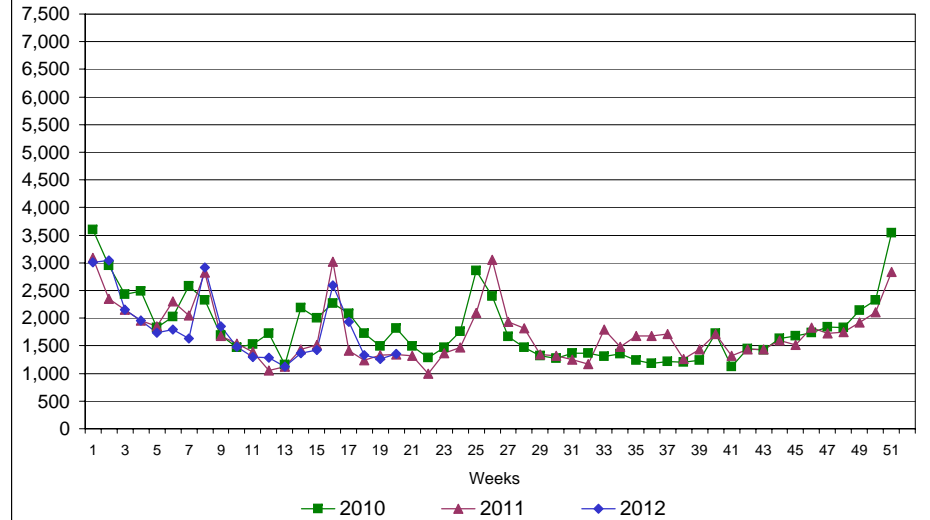
Rhode Island Department of Labor and Training

May 19, 2012

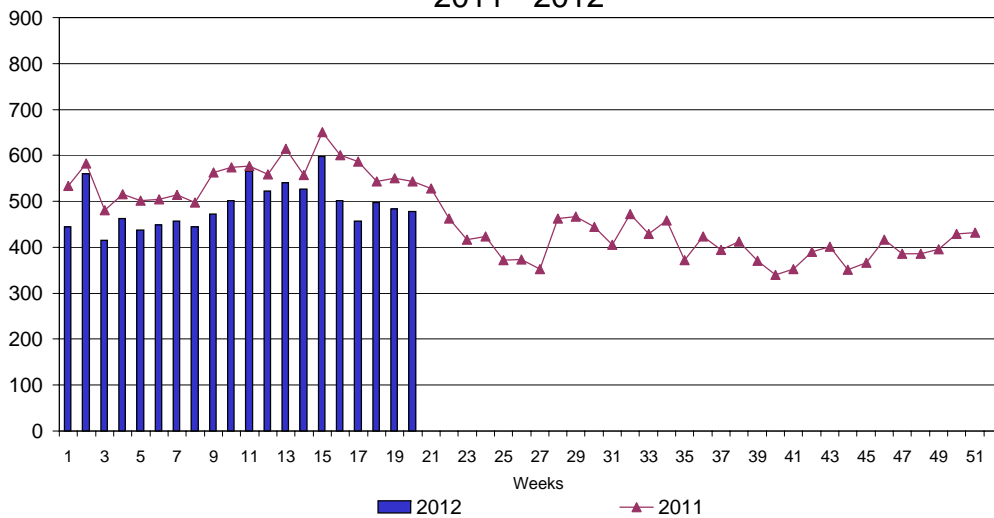
UI Claims Comparison Year to Date



UI Initial Claims 2010 - 2012



UI Exhaustions 2011 - 2012



TDI Claims Comparison Year to Date

