



Rhode Island Department of Labor and Training

Weekly Update of Claims Activity

Week Ending: May 26, 2012

Unemployment Insurance

Initial Claims – 1,420 initial claims were processed during the week ending 5/26/12, an increase of 69 from the previous week, and an increase of 105 from a year ago. The number of initial claims filed to date is unchanged from a year ago and down 11.5 percent from two years ago.

Continued Claims – 12,380 continued claims were processed during the week of 5/26/12, a decrease of 261 from the previous week and a decrease of 1,328 from a year ago. The number of continued claims filed to date is down 9.1 percent from last year and down 17.6 percent from two years ago.

Workshare – gives employers an alternative to layoffs by allowing employees to work reduced hours and collect a percentage of regular UI benefits to compensate for lost pay. This week, 63 initial claims and 966 continued claims were processed. An estimated 24 layoffs were prevented this week, as a result of Workshare.

Emergency Unemployment Compensation 08 – EUC08, which became effective July 6, 2008, provides up to 53 weeks of federally funded benefits to eligible individuals who exhausted their UI claims. This week there were 338 new EUC08 claims processed and 10,470 continued claims processed (4,811 under tier I, 2,515 under tier II, 2,187 under tier III and 957 under tier IV).

Extended Benefits – are payable to individuals who have exhausted UI or EUC08 claims. This week, 112 new EB claims and 1,866 continued EB claims were processed.

Exhaustions – 447 individuals exhausted their regular payments this week, a decrease of 31 from the previous week and a decrease of 81 from a year ago. There were 176 individuals that exhausted EUC08 and 110 individuals that exhausted EB.

Temporary Disability Insurance

Temporary Disability Insurance – 799 initial claims and 6,925 continued claims were processed for Temporary Disability Insurance. The average weekly TDI payment is \$441 per week. Rhode Island is currently paying an average of 10.6 weeks per new claim.

	<u>Initial Claims</u>			<u>Continued Claims</u>	<u>TOTAL - Initial and Continued Claims</u>			
	<u>Total</u>	<u>New</u>	<u>Additional</u>		<u>Current Week</u>	<u>Previous Week</u>	<u>Year Ago</u>	<u>Two Years Ago</u>
Total - All programs*	2,186	1,393	793	26,165	28,351	29,028	33,710	41,788
UI Claims	1,420	863	557	12,380	13,800	13,992	15,023	18,137
Change from:								
Previous Week	69	98	-29	-261	-192			
Year Ago	105	95	10	-1,328	-1,223			
Two Years Ago	-77	-65	-12	-4,260	-4,337			
EUC08 Claims	530	338	192	10,470	11,000	11,164	14,903	18,315
Extended Benefits	123	112	11	1,866	1,989	1,984	1,649	1,812
Interstate-Liable	50	26	24	483	533	485	503	605
Workshare	63	54	9	966	1,029	1,403	1,632	2,919
Workshare Equivalency	24	21	3	284	308	347	424	692
UI Exhaustions	-	-	-	447	447	478	528	584
EUC08 Exhaustions	-	-	-	176	176	158	228	307
EB Exhaustions	-	-	-	110	110	93	127	16
TDI Claims	799	654	145	6,925	7,724	8,639	7,876	8,505
Change from:								
Previous Week	-89	-80	-9	-826	-915			
Year Ago	50	53	-3	-202	-152			

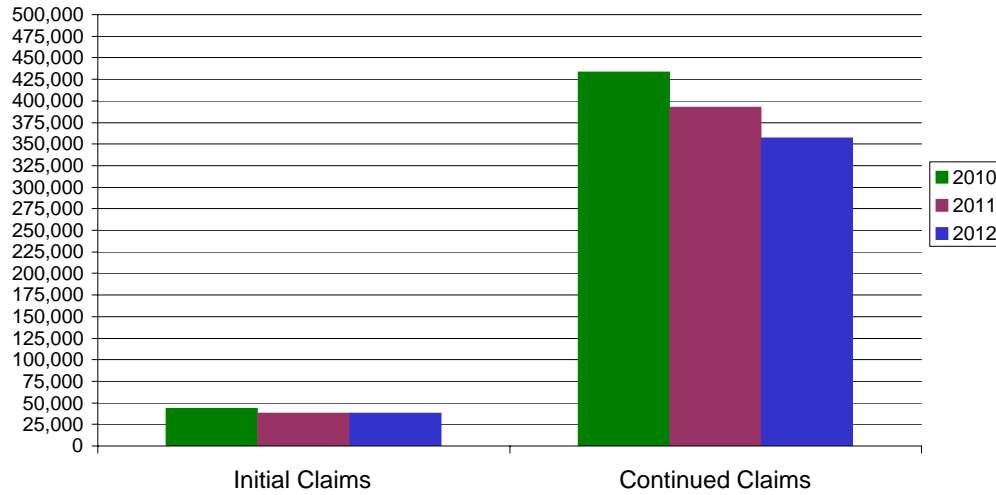
* Includes UI, EUC08, EB, Workshare & Interstate Liable.

Equal Opportunity Employer / Program / Auxiliary aids and services available upon request to individuals with disabilities / TTY via RI Relay 711.

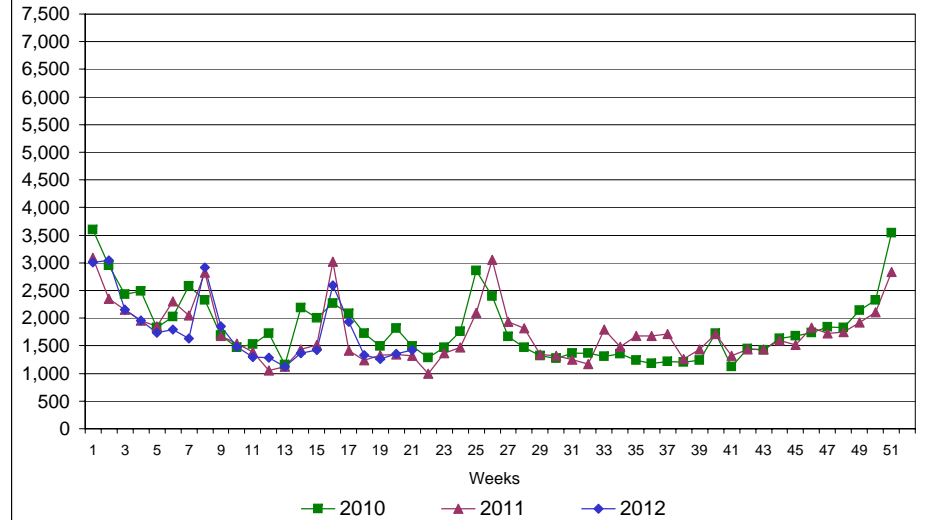
Rhode Island Department of Labor and Training

May 26, 2012

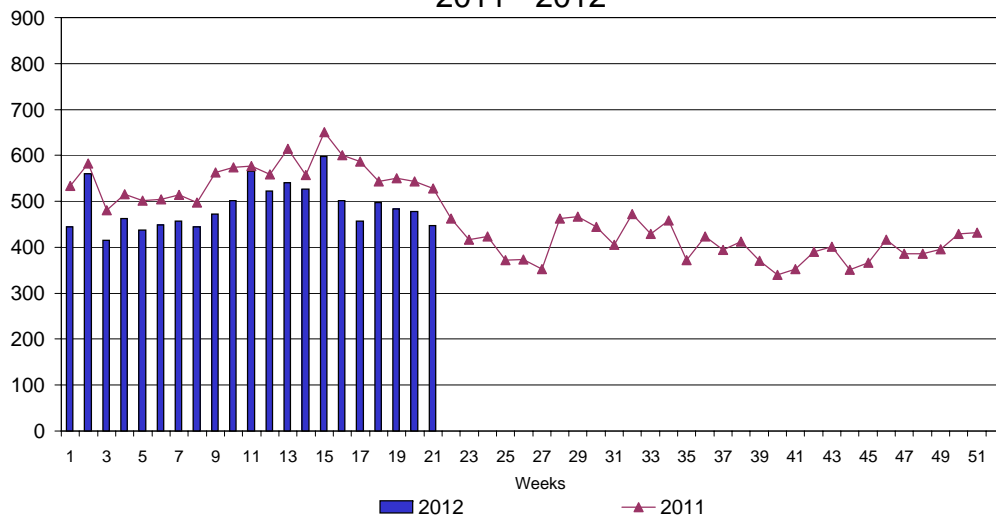
UI Claims Comparison Year to Date



UI Initial Claims 2010 - 2012



UI Exhaustions 2011 - 2012



TDI Claims Comparison Year to Date

