



## Rhode Island Department of Labor and Training

# *Weekly Update of Claims Activity*

*Week Ending: June 2, 2012*

### **Unemployment Insurance**

**Initial Claims** – 1,126 initial claims were processed during the week ending 6/2/12, a decrease of 294 from the previous week, and an increase of 135 from a year ago. The number of initial claims filed to date is up 0.4 percent from last year ago and down 11.5 percent from two years ago.

**Continued Claims** – 12,089 continued claims were processed during the week of 6/2/12, a decrease of 291 from the previous week and a decrease of 952 from a year ago. The number of continued claims filed to date is down 9.1 percent from last year and down 17.7 percent from two years ago.

**Workshare** – gives employers an alternative to layoffs by allowing employees to work reduced hours and collect a percentage of regular UI benefits to compensate for lost pay. This week, 32 initial claims and 1,349 continued claims were processed. An estimated 7 layoffs were prevented this week, as a result of Workshare.

**Emergency Unemployment Compensation 08** – EUC08, which became effective July 6, 2008, provides up to 53 weeks of federally funded benefits to eligible individuals who exhausted their UI claims. This week there were 276 new EUC08 claims processed and 10,280 continued claims processed (4,720 under tier I, 2,498 under tier II, 2,148 under tier III and 914 under tier IV).

**Extended Benefits** – are payable to individuals who have exhausted UI or EUC08 claims. This week, 112 new EB claims and 1,855 continued EB claims were processed.

**Exhaustions** – 391 individuals exhausted their regular payments this week, a decrease of 56 from the previous week and a decrease of 72 from a year ago. There were 209 individuals that exhausted EUC08 and 675 individuals that exhausted EB.

### **Temporary Disability Insurance**

**Temporary Disability Insurance** – 700 initial claims and 6,371 continued claims were processed for Temporary Disability Insurance. The average weekly TDI payment is \$447 per week. Rhode Island is currently paying an average of 10.6 weeks per new claim.

	<b>Initial Claims</b>			<b>Continued Claims</b>	<b>TOTAL - Initial and Continued Claims</b>			
	<b>Total</b>	<b>New</b>	<b>Additional</b>		<b>Current Week</b>	<b>Previous Week</b>	<b>Year Ago</b>	<b>Two Years Ago</b>
<b>Total - All programs*</b>	1,728	1,107	621	26,068	27,796	28,351	31,774	38,377
<b>UI Claims</b>	1,126	689	437	12,089	13,215	13,800	14,032	16,393
Change from:								
Previous Week	-294	-174	-120	-291	-585			
Year Ago	135	148	-13	-952	-817			
Two Years Ago	-156	-100	-56	-3,022	-3,178			
<b>EUC08 Claims</b>	431	276	155	10,280	10,711	11,000	14,594	17,336
<b>Extended Benefits</b>	114	112	2	1,855	1,969	1,989	1,580	2,380
<b>Interstate-Liable</b>	25	18	7	495	520	533	492	497
<b>Workshare</b>	32	12	20	1,349	1,381	1,029	1,076	1,771
<b>Workshare Equivalency</b>	7	3	4	317	324	308	313	461
<b>UI Exhaustions</b>	-	-	-	391	391	447	463	544
<b>EUC08 Exhaustions</b>	-	-	-	209	209	176	201	293
<b>EB Exhaustions</b>	-	-	-	675	675	110	98	33
<b>TDI Claims</b>	700	571	129	6,371	7,071	7,724	7,550	7,945
Change from:								
Previous Week	-99	-83	-16	-554	-653			
Year Ago	121	94	27	-600	-479			

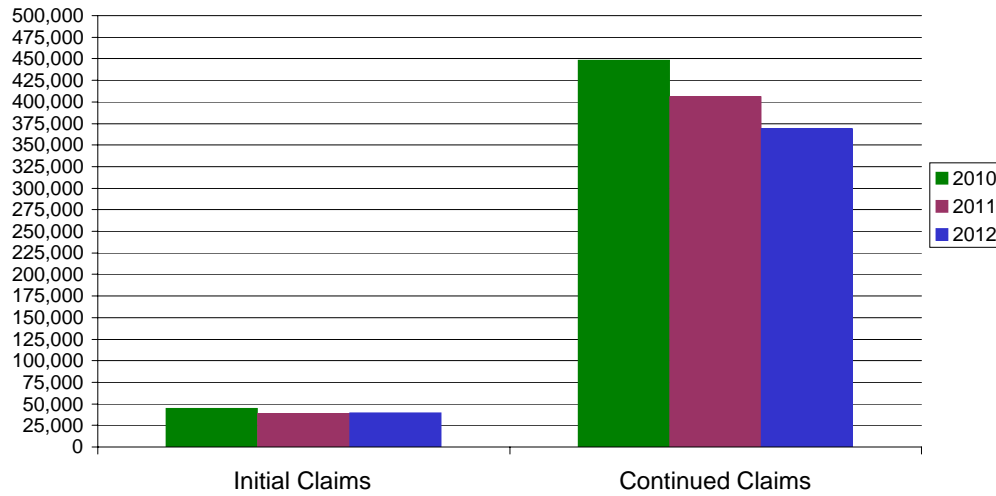
\* Includes UI, EUC08, EB, Workshare & Interstate Liable.

Equal Opportunity Employer / Program / Auxiliary aids and services available upon request to individuals with disabilities / TTY via RI Relay 711.

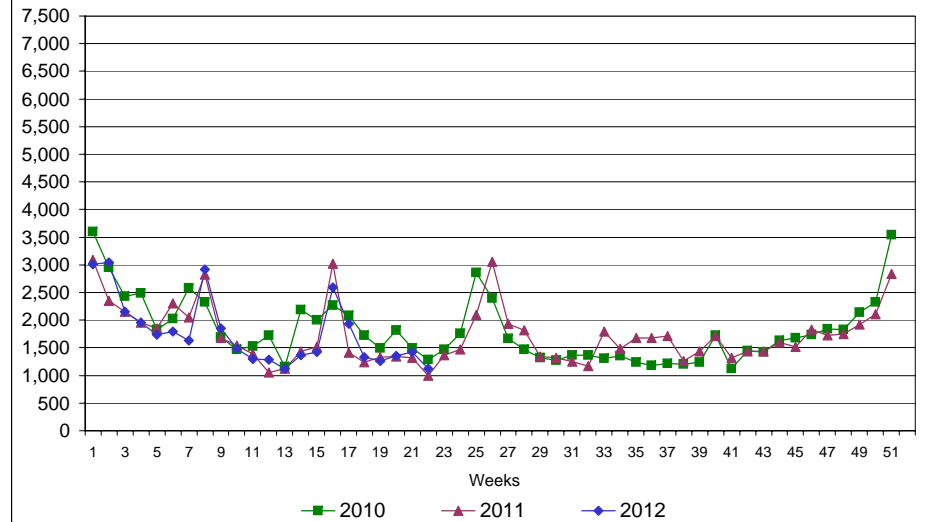
# Rhode Island Department of Labor and Training

## June 2, 2012

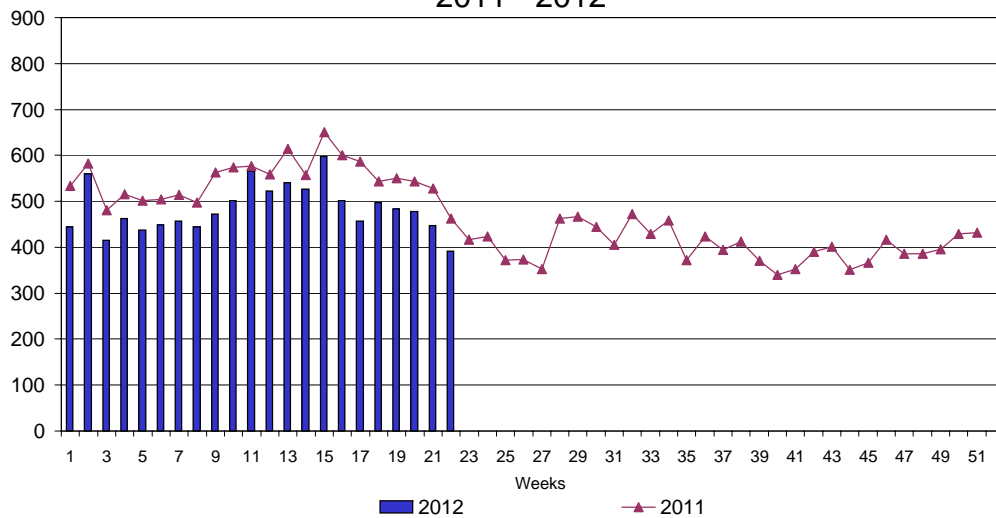
### UI Claims Comparison Year to Date



### UI Initial Claims 2010 - 2012



### UI Exhaustions 2011 - 2012



### TDI Claims Comparison Year to Date

