



Rhode Island Department of Labor and Training

Weekly Update of Claims Activity

Week Ending: June 9, 2012

Unemployment Insurance

Initial Claims – 1,407 initial claims were processed during the week ending 6/9/12, an increase of 281 from the previous week, and an increase of 41 from a year ago. The number of initial claims filed to date is up 0.5 percent from last year ago and down 11.2 percent from two years ago.

Continued Claims – 12,208 continued claims were processed during the week of 6/9/12, an increase of 119 from the previous week and a decrease of 791 from a year ago. The number of continued claims filed to date is down 9.0 percent from last year and down 17.8 percent from two years ago.

Workshare – gives employers an alternative to layoffs by allowing employees to work reduced hours and collect a percentage of regular UI benefits to compensate for lost pay. This week, 19 initial claims and 672 continued claims were processed. An estimated 8 layoffs were prevented this week, as a result of Workshare.

Emergency Unemployment Compensation 08 – EUC08, which became effective July 6, 2008, provides up to 53 weeks of federally funded benefits to eligible individuals who exhausted their UI claims. This week there were 343 new EUC08 claims processed and 10,225 continued claims processed (4,643 under tier I, 2,574 under tier II, 2,150 under tier III and 858 under tier IV).

Extended Benefits – are payable to individuals who have exhausted UI or EUC08 claims. This week, 118 new EB claims and 1,716 continued EB claims were processed.

Exhaustions – 355 individuals exhausted their regular payments this week, a decrease of 36 from the previous week and a decrease of 61 from a year ago. There were 171 individuals that exhausted EUC08 and 80 individuals that exhausted EB.

Temporary Disability Insurance

Temporary Disability Insurance – 806 initial claims and 7,338 continued claims were processed for Temporary Disability Insurance. The average weekly TDI payment is \$446 per week. Rhode Island is currently paying an average of 10.6 weeks per new claim.

	Initial Claims			Continued Claims	TOTAL - Initial and Continued Claims			
	Total	New	Additional		Current Week	Previous Week	Year Ago	Two Years Ago
Total - All programs*	2,100	1,298	802	25,328	27,428	27,796	32,652	40,675
UI Claims	1,407	803	604	12,208	13,615	13,215	14,365	16,929
Change from:								
Previous Week	281	114	167	119	400			
Year Ago	41	12	29	-791	-750			
Two Years Ago	-61	-29	-32	-3,253	-3,314			
EUC08 Claims	511	343	168	10,225	10,736	10,711	14,809	17,074
Extended Benefits	123	118	5	1,716	1,839	1,969	1,571	3,354
Interstate-Liable	40	19	21	507	547	520	534	527
Workshare	19	15	4	672	691	1,381	1,373	2,791
Workshare Equivalency	8	7	1	200	208	324	351	685
UI Exhaustions	-	-	-	355	355	391	416	483
EUC08 Exhaustions	-	-	-	171	171	209	215	340
EB Exhaustions	-	-	-	80	80	675	67	29
TDI Claims	806	687	119	7,338	8,144	7,071	7,941	8,655
Change from:								
Previous Week	106	116	-10	967	1,073			
Year Ago	-111	-70	-41	314	203			

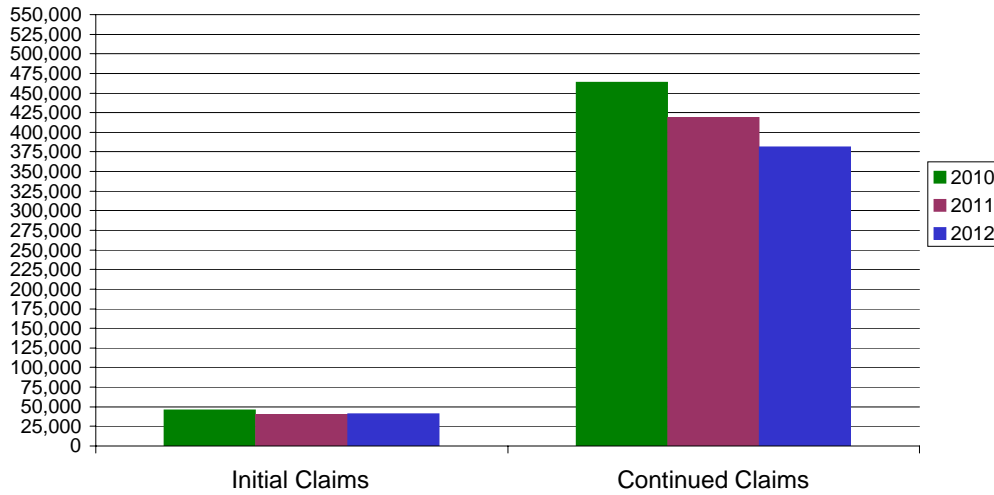
* Includes UI, EUC08, EB, Workshare & Interstate Liable.

Equal Opportunity Employer / Program / Auxiliary aids and services available upon request to individuals with disabilities / TTY via RI Relay 711.

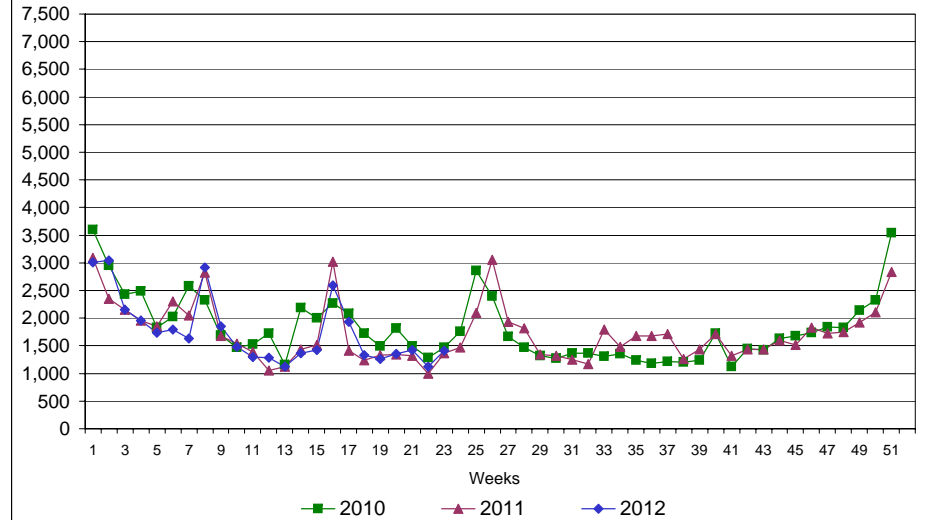
Rhode Island Department of Labor and Training

June 9, 2012

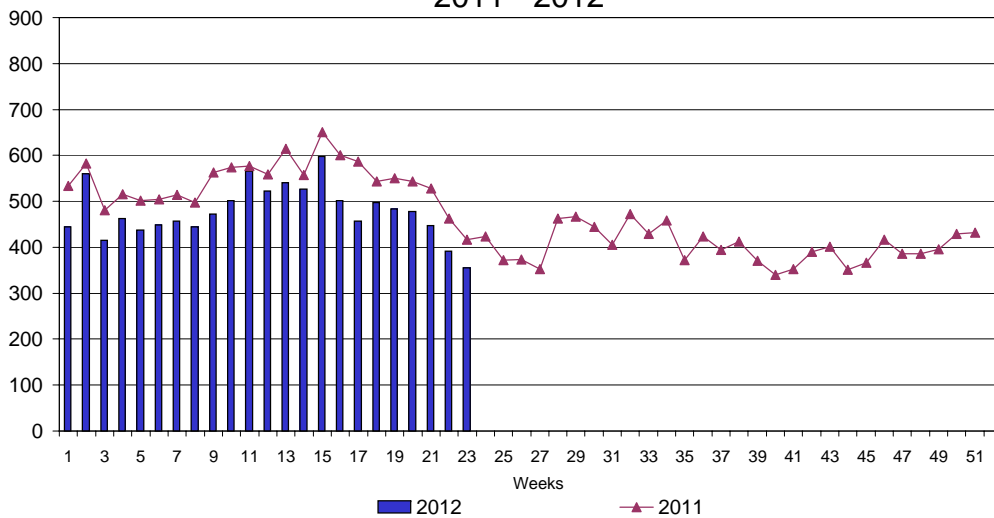
UI Claims Comparison Year to Date



UI Initial Claims 2010 - 2012



UI Exhaustions 2011 - 2012



TDI Claims Comparison Year to Date

