



Rhode Island Department of Labor and Training

Weekly Update of Claims Activity

Week Ending: June 16, 2012

Unemployment Insurance

Initial Claims – 1,597 initial claims were processed during the week ending 6/16/12, an increase of 190 from the previous week, and an increase of 128 from a year ago. The number of initial claims filed to date is up 0.7 percent from last year ago and down 11.2 percent from two years ago.

Continued Claims – 12,105 continued claims were processed during the week of 6/16/12, a decrease of 103 from the previous week and a decrease of 745 from a year ago. The number of continued claims filed to date is down 8.9 percent from last year and down 17.9 percent from two years ago.

Workshare – gives employers an alternative to layoffs by allowing employees to work reduced hours and collect a percentage of regular UI benefits to compensate for lost pay. This week, 31 initial claims and 1,281 continued claims were processed. An estimated 11 layoffs were prevented this week, as a result of Workshare.

Emergency Unemployment Compensation 08 – EUC08, which became effective July 6, 2008, provides up to 53 weeks of federally funded benefits to eligible individuals who exhausted their UI claims. This week there were 353 new EUC08 claims processed and 10,105 continued claims processed (4,559 under tier I, 2,546 under tier II, 2,135 under tier III and 865 under tier IV).

Extended Benefits – are payable to individuals who have exhausted UI or EUC08 claims. This week, 93 new EB claims and 1,708 continued EB claims were processed.

Exhaustions – 411 individuals exhausted their regular payments this week, an increase of 56 from the previous week and a decrease of 12 from a year ago. There were 149 individuals that exhausted EUC08 and 84 individuals that exhausted EB.

Temporary Disability Insurance

Temporary Disability Insurance – 1,084 initial claims and 7,122 continued claims were processed for Temporary Disability Insurance. The average weekly TDI payment is \$451 per week. Rhode Island is currently paying an average of 10.6 weeks per new claim.

	Initial Claims			Continued Claims	TOTAL - Initial and Continued Claims			
	Total	New	Additional		Current Week	Previous Week	Year Ago	Two Years Ago
Total - All programs*	2,285	1,270	1,015	25,639	27,924	27,428	31,776	39,953
UI Claims	1,597	788	809	12,105	13,702	13,615	14,319	17,329
Change from:								
Previous Week	190	-15	205	-103	87			
Year Ago	128	-91	219	-745	-617			
Two Years Ago	-165	-190	25	-3,462	-3,627			
EUC08 Claims	530	353	177	10,105	10,635	10,736	14,568	15,844
Extended Benefits	102	93	9	1,708	1,810	1,839	1,498	4,501
Interstate-Liable	25	9	16	440	465	547	516	494
Workshare	31	27	4	1,281	1,312	691	875	1,785
Workshare Equivalency	11	10	1	317	328	208	215	440
UI Exhaustions	-	-	-	411	411	355	423	528
EUC08 Exhaustions	-	-	-	149	149	171	210	318
EB Exhaustions	-	-	-	84	84	80	53	38
TDI Claims	1,084	904	180	7,122	8,206	8,144	7,681	8,323
Change from:								
Previous Week	278	217	61	-216	62			
Year Ago	188	154	34	337	525			

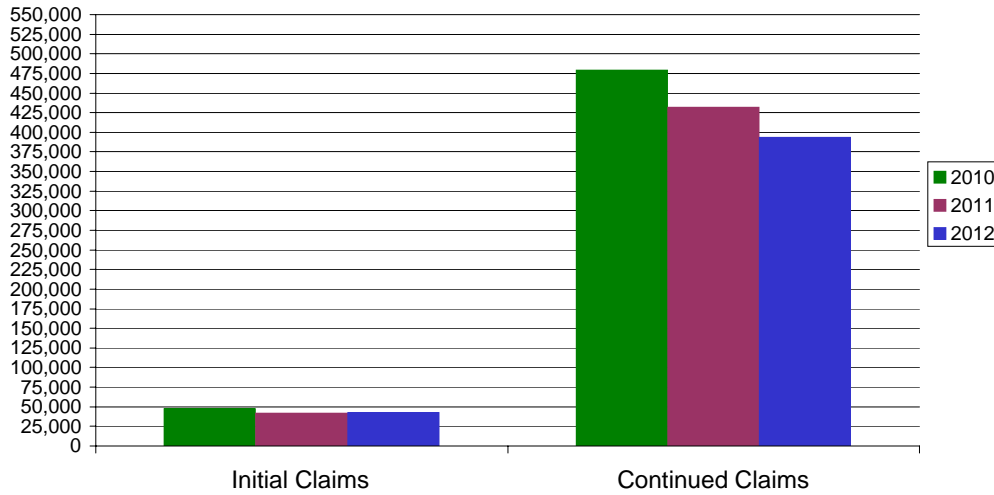
* Includes UI, EUC08, EB, Workshare & Interstate Liable.

Equal Opportunity Employer / Program / Auxiliary aids and services available upon request to individuals with disabilities / TTY via RI Relay 711.

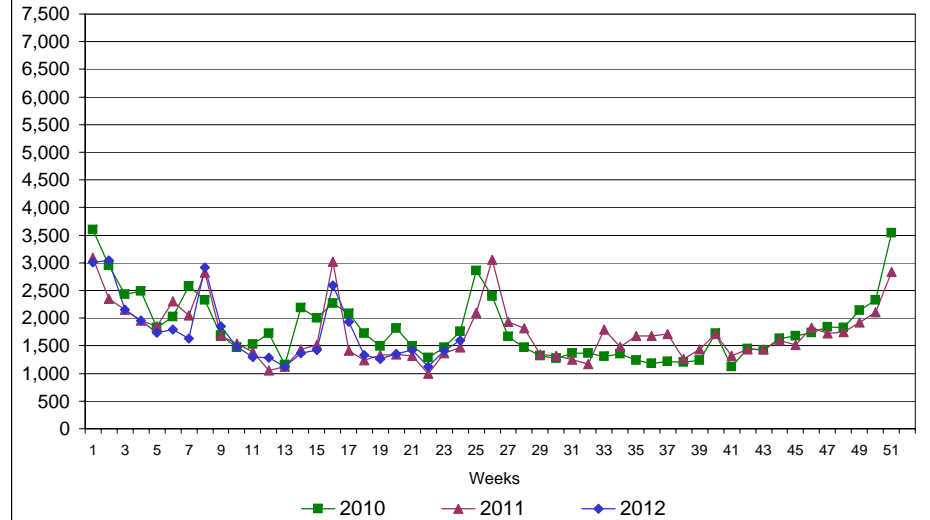
Rhode Island Department of Labor and Training

June 16, 2012

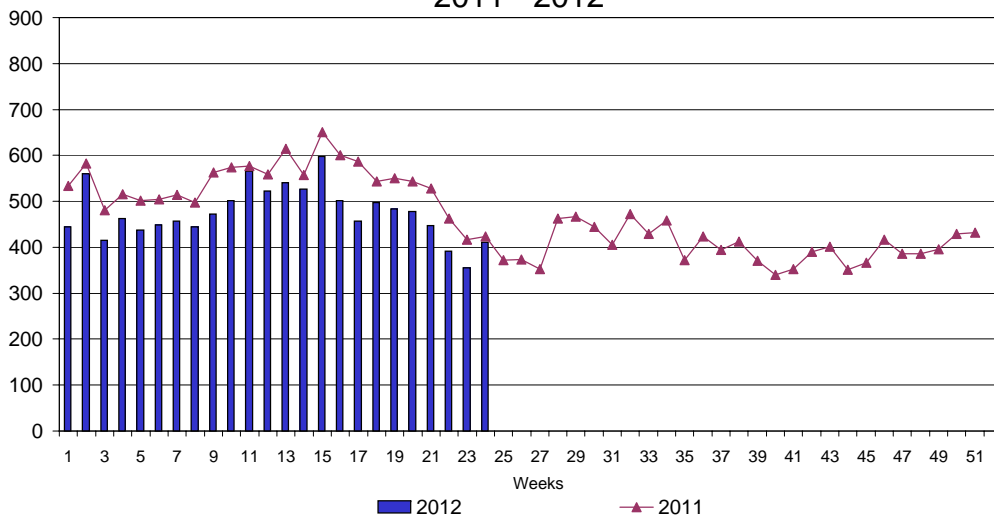
UI Claims Comparison Year to Date



UI Initial Claims 2010 - 2012



UI Exhaustions 2011 - 2012



TDI Claims Comparison Year to Date

