



## Rhode Island Department of Labor and Training

# *Weekly Update of Claims Activity*

*Week Ending: June 23, 2012*

### **Unemployment Insurance**

**Initial Claims** – 2,290 initial claims were processed during the week ending 6/23/12, an increase of 693 from the previous week, and an increase of 200 from a year ago. The number of initial claims filed to date is up 1.2 percent from last year ago and down 11.7 percent from two years ago.

**Continued Claims** – 12,330 continued claims were processed during the week of 6/23/12, an increase of 225 from the previous week and a decrease of 750 from a year ago. The number of continued claims filed to date is down 8.8 percent from last year and down 17.9 percent from two years ago.

**Workshare** – gives employers an alternative to layoffs by allowing employees to work reduced hours and collect a percentage of regular UI benefits to compensate for lost pay. This week, 37 initial claims and 831 continued claims were processed. An estimated 14 layoffs were prevented this week, as a result of Workshare.

**Emergency Unemployment Compensation 08** – EUC08, which became effective July 6, 2008, provides up to 53 weeks of federally funded benefits to eligible individuals who exhausted their UI claims. This week there were 285 new EUC08 claims processed and 9,989 continued claims processed (4,491 under tier I, 2,543 under tier II, 2,091 under tier III and 864 under tier IV).

**Extended Benefits** – are payable to individuals who have exhausted UI or EUC08 claims. This week, 88 new EB claims and 1,694 continued EB claims were processed.

**Exhaustions** – 384 individuals exhausted their regular payments this week, a decrease of 27 from the previous week and an increase of 12 from a year ago. There were 157 individuals that exhausted EUC08 and 84 individuals that exhausted EB.

### **Temporary Disability Insurance**

**Temporary Disability Insurance** – 562 initial claims and 8,107 continued claims were processed for Temporary Disability Insurance. The average weekly TDI payment is \$442 per week. Rhode Island is currently paying an average of 10.6 weeks per new claim.

	Initial Claims			Continued Claims	TOTAL - Initial and Continued Claims			
	Total	New	Additional		Current Week	Previous Week	Year Ago	Two Years Ago
<b>Total - All programs*</b>	2,915	1,403	1,512	25,293	28,208	27,924	33,033	40,204
<b>UI Claims</b>	2,290	989	1,301	12,330	14,620	13,702	15,170	17,677
Change from:								
Previous Week	693	201	492	225	918			
Year Ago	200	75	125	-750	-550			
Two Years Ago	-569	-379	-190	-2,488	-3,057			
<b>EUC08 Claims</b>	457	285	172	9,989	10,446	10,635	14,518	14,227
<b>Extended Benefits</b>	100	88	12	1,694	1,794	1,810	1,477	5,603
<b>Interstate-Liable</b>	31	13	18	449	480	465	494	495
<b>Workshare</b>	37	28	9	831	868	1,312	1,374	2,202
<b>Workshare Equivalency</b>	14	10	4	287	301	328	409	570
<b>UI Exhaustions</b>	-	-	-	384	384	411	372	480
<b>EUC08 Exhaustions</b>	-	-	-	157	157	149	191	358
<b>EB Exhaustions</b>	-	-	-	84	84	84	57	36
<b>TDI Claims</b>	562	463	99	8,107	8,669	8,206	8,329	8,907
Change from:								
Previous Week	-522	-441	-81	985	463			
Year Ago	-266	-211	-55	606	340			

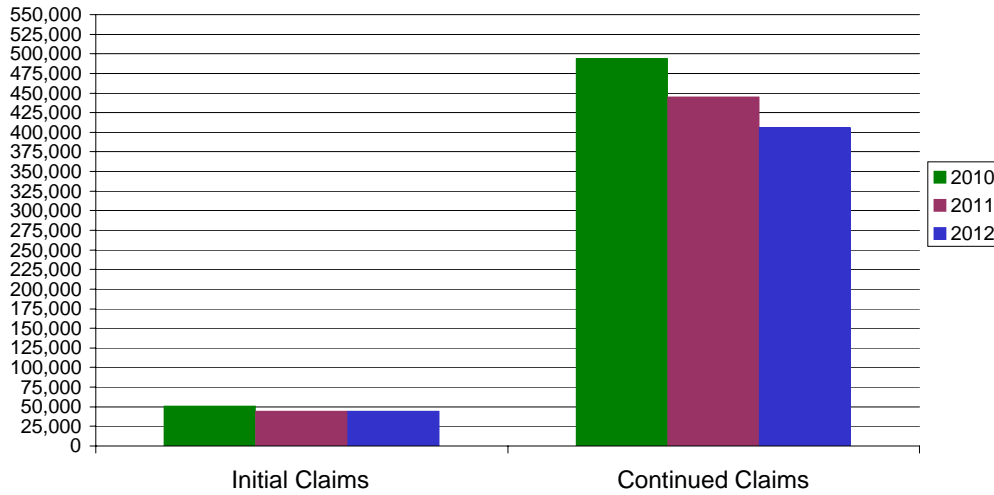
\* Includes UI, EUC08, EB, Workshare & Interstate Liable.

Equal Opportunity Employer / Program / Auxiliary aids and services available upon request to individuals with disabilities / TTY via RI Relay 711.

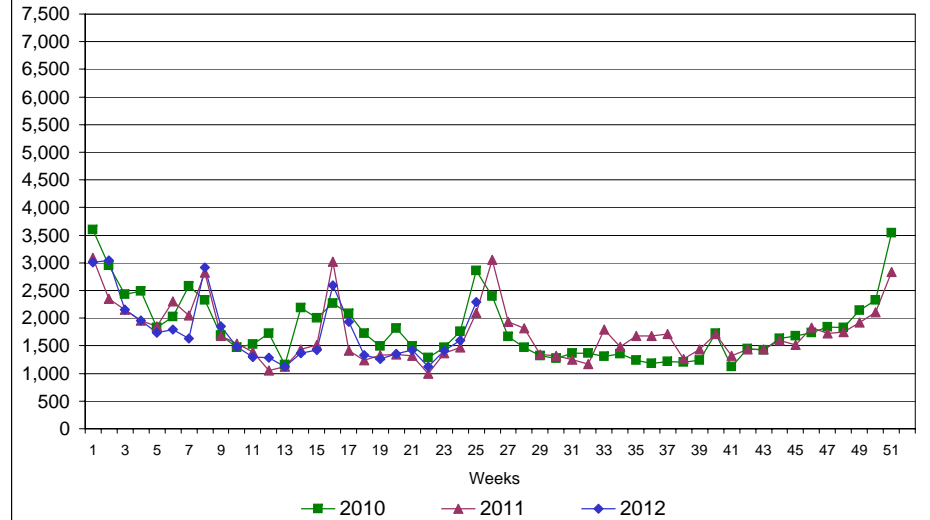
# Rhode Island Department of Labor and Training

## June 23, 2012

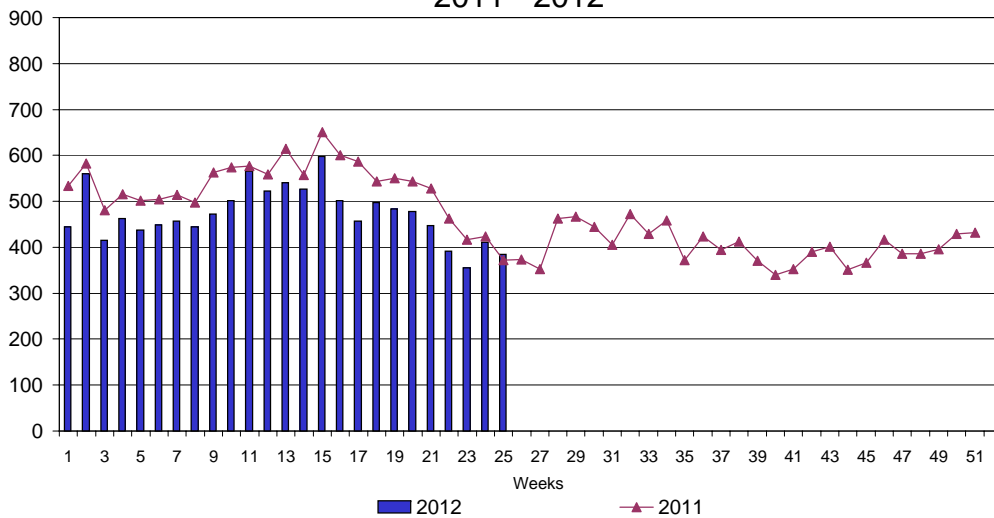
### UI Claims Comparison Year to Date



### UI Initial Claims 2010 - 2012



### UI Exhaustions 2011 - 2012



### TDI Claims Comparison Year to Date

