



## Rhode Island Department of Labor and Training

# *Weekly Update of Claims Activity*

*Week Ending: June 30, 2012*

### **Unemployment Insurance**

**Initial Claims** – 2,202 initial claims were processed during the week ending 6/30/12, a decrease of 88 from the previous week, and a decrease of 856 from a year ago. The number of initial claims filed to date is down 0.7 percent from last year and down 11.5 percent from two years ago.

**Continued Claims** – 13,815 continued claims were processed during the week of 6/30/12, an increase of 1,485 from the previous week and an increase of 349 from a year ago. The number of continued claims filed to date is down 8.5 percent from last year and down 17.9 percent from two years ago.

**Workshare** – gives employers an alternative to layoffs by allowing employees to work reduced hours and collect a percentage of regular UI benefits to compensate for lost pay. This week, 9 initial claims and 1,113 continued claims were processed. An estimated 4 layoffs were prevented this week, as a result of Workshare.

**Emergency Unemployment Compensation 08** – EUC08, which became effective July 6, 2008, provides up to 53 weeks of federally funded benefits to eligible individuals who exhausted their UI claims. This week there were 311 new EUC08 claims processed and 9,935 continued claims processed (4,492 under tier I, 2,505 under tier II, 2,056 under tier III and 882 under tier IV).

**Extended Benefits** – are payable to individuals who have exhausted UI or EUC08 claims. This week, 86 new EB claims and 1,713 continued EB claims were processed.

**Exhaustions** – 375 individuals exhausted their regular payments this week, a decrease of 9 from the previous week and an increase of 2 from a year ago. There were 156 individuals that exhausted EUC08 and 83 individuals that exhausted EB.

### **Temporary Disability Insurance**

**Temporary Disability Insurance** – 1,014 initial claims and 6,801 continued claims were processed for Temporary Disability Insurance. The average weekly TDI payment is \$452 per week. Rhode Island is currently paying an average of 10.5 weeks per new claim.

|                              | <u>Initial Claims</u> |            |                   | <u>Continued Claims</u> | <u>TOTAL - Initial and Continued Claims</u> |                      |                 |                      |
|------------------------------|-----------------------|------------|-------------------|-------------------------|---|----------------------|-----------------|----------------------|
|                              | <u>Total</u>          | <u>New</u> | <u>Additional</u> |                         | <u>Current Week</u>                         | <u>Previous Week</u> | <u>Year Ago</u> | <u>Two Years Ago</u> |
| <b>Total - All programs*</b> | 2,822                 | 1,445      | 1,377             | 27,022                  | 29,844                                      | 28,208               | 33,517          | 41,505               |
| <b>UI Claims</b>             | 2,202                 | 1,031      | 1,171             | 13,815                  | 16,017                                      | 14,620               | 16,524          | 19,202               |
| Change from:                 |                       |            |                   |                         |   |                      |                 |                      |
| Previous Week                | -88                   | 42         | -130              | 1,485                   | 1,397                                       |                      |                 |                      |
| Year Ago                     | -856                  | -556       | -300              | 349                     | -507  |                      |                 |                      |
| Two Years Ago                | -189                  | -342       | 153               | -2,996                  | -3,185                                      |                      |                 |                      |
| <b>EUC08 Claims</b>          | 486                   | 311        | 175               | 9,935                   | 10,421                                      | 10,446               | 14,293          | 12,832               |
| <b>Extended Benefits</b>     | 98                    | 86         | 12                | 1,713                   | 1,811                                       | 1,794                | 1,461           | 6,964                |
| <b>Interstate-Liable</b>     | 27                    | 9          | 18                | 446                     | 473   | 480                  | 477             | 517                  |
| <b>Workshare</b>             | 9                     | 8          | 1                 | 1,113                   | 1,122                                       | 868                  | 762             | 1,990                |
| <b>Workshare Equivalency</b> | 4                     | 3          | 1                 | 263                     | 267   | 301                  | 206             | 459                  |
| <b>UI Exhaustions</b>        | -                     | -          | -                 | 375                     | 375   | 384                  | 373             | 515                  |
| <b>EUC08 Exhaustions</b>     | -                     | -          | -                 | 156                     | 156   | 157                  | 186             | 394                  |
| <b>EB Exhaustions</b>        | -                     | -          | -                 | 83                      | 83  | 84                   | 54              | 40                   |
| <b>TDI Claims</b>            | 1,014                 | 858        | 156               | 6,801                   | 7,815                                       | 8,669                | 8,032           | 8,158                |
| Change from:                 |                       |            |                   |                         |   |                      |                 |                      |
| Previous Week                | 452                   | 395        | 57                | -1,306                  | -854  |                      |                 |                      |
| Year Ago                     | 287                   | 260        | 27                | -504                    | -217  |                      |                 |                      |

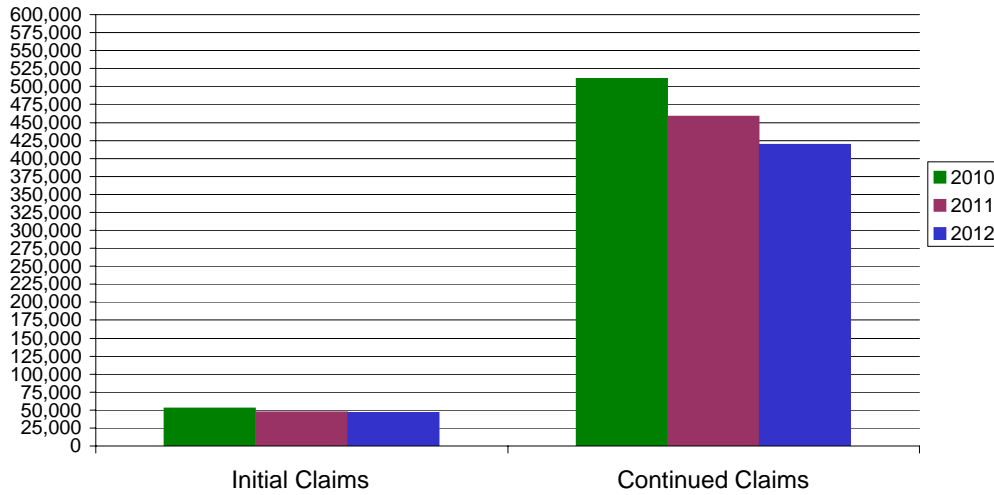
\* Includes UI, EUC08, EB, Workshare & Interstate Liable.

Equal Opportunity Employer / Program / Auxiliary aids and services available upon request to individuals with disabilities / TTY via RI Relay 711.

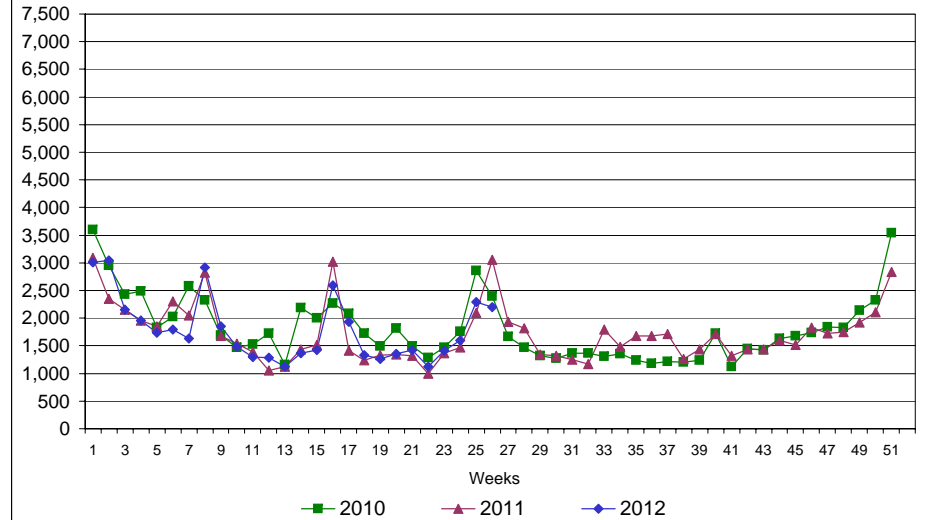
# Rhode Island Department of Labor and Training

## June 30, 2012

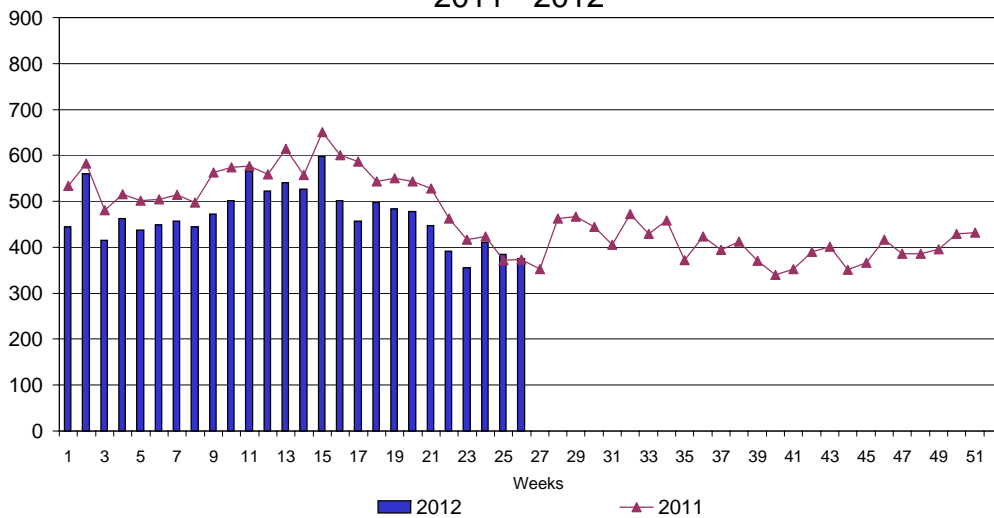
### UI Claims Comparison Year to Date



### UI Initial Claims 2010 - 2012



### UI Exhaustions 2011 - 2012



### TDI Claims Comparison Year to Date

