



Rhode Island Department of Labor and Training

Weekly Update of Claims Activity

Week Ending: July 7, 2012

Unemployment Insurance

Initial Claims – 1,873 initial claims were processed during the week ending 7/7/12, a decrease of 329 from the previous week, and a decrease of 57 from a year ago. The number of initial claims filed to date is down 0.8 percent from last year and down 10.8 percent from two years ago.

Continued Claims – 14,121 continued claims were processed during the week of 7/7/12, an increase of 306 from the previous week and a decrease of 802 from a year ago. The number of continued claims filed to date is down 8.4 percent from last year and down 17.7 percent from two years ago.

Workshare – gives employers an alternative to layoffs by allowing employees to work reduced hours and collect a percentage of regular UI benefits to compensate for lost pay. This week, 17 initial claims and 585 continued claims were processed. An estimated 6 layoffs were prevented this week, as a result of Workshare.

Emergency Unemployment Compensation 08 – EUC08, which became effective July 6, 2008, provides up to 53 weeks of federally funded benefits to eligible individuals who exhausted their UI claims. This week there were 206 new EUC08 claims processed and 9,643 continued claims processed (4,379 under tier I, 2,433 under tier II, 1,984 under tier III and 847 under tier IV).

Extended Benefits – are payable to individuals who have exhausted UI or EUC08 claims. This week, 54 new EB claims and 1,652 continued EB claims were processed.

Exhaustions – 353 individuals exhausted their regular payments this week, a decrease of 22 from the previous week and an increase of 1 from a year ago. There were 150 individuals that exhausted EUC08 and 94 individuals that exhausted EB.

Temporary Disability Insurance

Temporary Disability Insurance – 620 initial claims and 6,656 continued claims were processed for Temporary Disability Insurance. The average weekly TDI payment is \$456 per week. Rhode Island is currently paying an average of 10.5 weeks per new claim.

	<u>Initial Claims</u>			<u>Continued Claims</u>	<u>TOTAL - Initial and Continued Claims</u>			
	<u>Total</u>	<u>New</u>	<u>Additional</u>		<u>Current Week</u>	<u>Previous Week</u>	<u>Year Ago</u>	<u>Two Years Ago</u>
Total - All programs*	2,326	1,376	950	26,445	28,771	29,844	33,523	38,773
UI Claims	1,873	1,087	786	14,121	15,994	16,017	16,853	17,904
Change from:								
Previous Week	-329	56	-385	306	-23			
Year Ago	-57	-61	4	-802	-859			
Two Years Ago	205	-22	227	-2,115	-1,910			
EUC08 Claims	342	206	136	9,643	9,985	10,421	13,930	11,023
Extended Benefits	66	54	12	1,652	1,718	1,811	1,431	7,720
Interstate-Liable	28	15	13	444	472	473	425	495
Workshare	17	14	3	585	602	1,122	884	1,631
Workshare Equivalency	6	0	6	251	257	267	236	433
UI Exhaustions	-	-	-	353	353	375	352	464
EUC08 Exhaustions	-	-	-	150	150	156	200	387
EB Exhaustions	-	-	-	94	94	83	45	53
TDI Claims	620	517	103	6,656	7,276	7,815	7,298	8,039
Change from:								
Previous Week	-394	-341	-53	-145	-539			
Year Ago	-19	-14	-5	-3	-22			

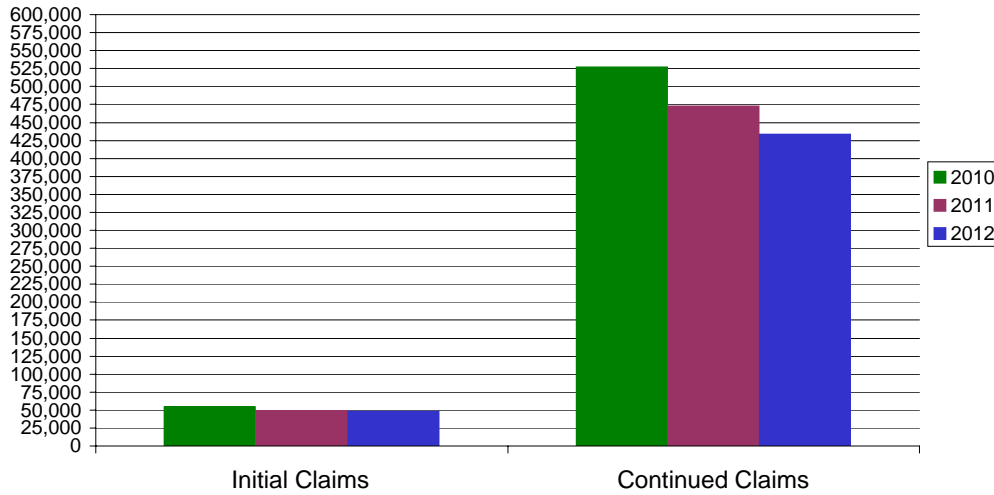
* Includes UI, EUC08, EB, Workshare & Interstate Liable.

Equal Opportunity Employer / Program / Auxiliary aids and services available upon request to individuals with disabilities / TTY via RI Relay 711.

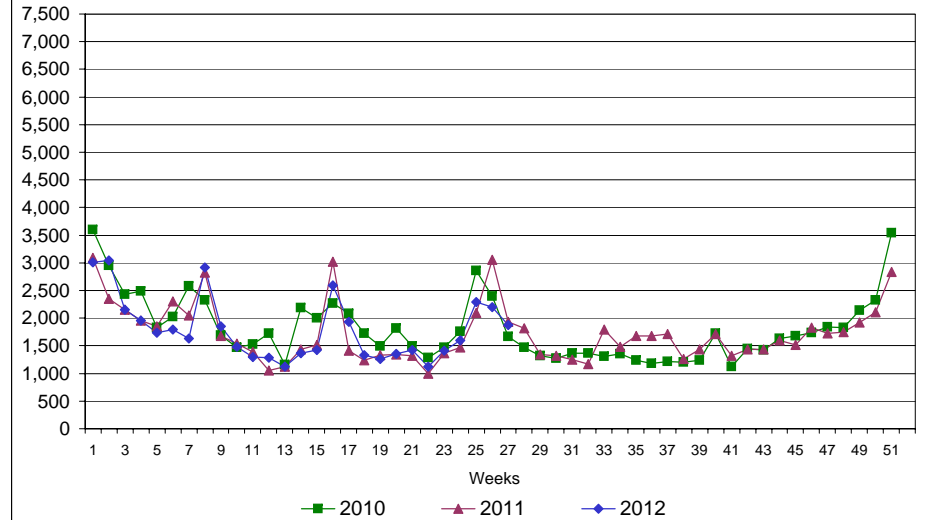
Rhode Island Department of Labor and Training

July 7, 2012

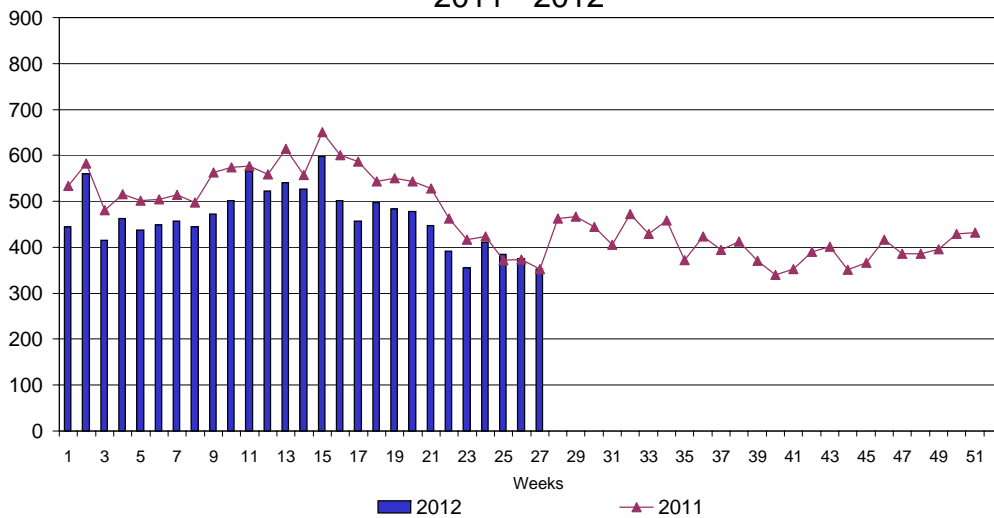
UI Claims Comparison Year to Date



UI Initial Claims 2010 - 2012



UI Exhaustions 2011 - 2012



TDI Claims Comparison Year to Date

