



## Rhode Island Department of Labor and Training

# *Weekly Update of Claims Activity*

*Week Ending: July 21, 2012*

### **Unemployment Insurance**

**Initial Claims** – 1,409 initial claims were processed during the week ending 7/21/12, a decrease of 548 from the previous week, and an increase of 69 from a year ago. The number of initial claims filed to date is down 0.4 percent from last year and down 9.2 percent from two years ago.

**Continued Claims** – 14,725 continued claims were processed during the week of 7/21/12, an increase of 22 from the previous week and a decrease of 1,326 from a year ago. The number of continued claims filed to date is down 8.4 percent from last year and down 17.7 percent from two years ago.

**Workshare** – gives employers an alternative to layoffs by allowing employees to work reduced hours and collect a percentage of regular UI benefits to compensate for lost pay. This week, 12 initial claims and 573 continued claims were processed. An estimated 2 layoffs were prevented this week, as a result of Workshare.

**Emergency Unemployment Compensation 08** – EUC08, which became effective July 6, 2008, provides up to 53 weeks of federally funded benefits to eligible individuals who exhausted their UI claims. This week there were 337 new EUC08 claims processed and 9,444 continued claims processed (4,302 under tier I, 2,416 under tier II, 1,868 under tier III and 858 under tier IV).

**Extended Benefits** – based on data released by the Bureau of Labor Statistics on June 15, 2012, the three month average, seasonally adjusted total unemployment rate for Rhode Island (11.1) was not at least ten percent greater than the comparable rate in any of the three prior years, a necessary criterion for the program to remain on. Therefore, the payable period for the EB program in RI ended July 7, 2012.

**Exhaustions** – 427 individuals exhausted their regular payments this week, a decrease of 40 from a year ago. There were 152 individuals that exhausted EUC08 and 14 individuals that exhausted EB.

### **Temporary Disability Insurance**

**Temporary Disability Insurance** – 548 initial claims and 8,278 continued claims were processed for Temporary Disability Insurance. The average weekly TDI payment is \$443 per week. Rhode Island is currently paying an average of 10.5 weeks per new claim.

|                              | Initial Claims |       |            | Continued Claims | TOTAL - Initial and Continued Claims |               |          |               |
|------------------------------|----------------|-------|------------|------------------|--------------------------------------|---------------|----------|---------------|
|                              | Total          | New   | Additional |                  | Current Week                         | Previous Week | Year Ago | Two Years Ago |
| <b>Total - All programs*</b> | 1,995          | 1,224 | 771        | 25,265           | 27,260                               | 29,793        | 34,309   | 40,230        |
| <b>UI Claims</b>             | 1,409          | 857   | 552        | 14,725           | 16,134                               | 16,660        | 17,391   | 18,946        |
| Change from:                 |                |       |            |                  |                                      |               |          |               |
| Previous Week                | -548           | -276  | -272       | 22               | -526                                 |               |          |               |
| Year Ago                     | 69             | 81    | -12        | -1,326           | -1,257                               |               |          |               |
| Two Years Ago                | 88             | -26   | 114        | -2,900           | -2,812                               |               |          |               |
| <b>EUC08 Claims</b>          | 530            | 337   | 193        | 9,444            | 9,974                                | 9,960         | 13,993   | 8,592         |
| <b>Extended Benefits</b>     | 10             | 7     | 3          | 62               | 72                                   | 1,606         | 1,439    | 9,510         |
| <b>Interstate-Liable</b>     | 34             | 23    | 11         | 461              | 495                                  | 496           | 469      | 558           |
| <b>Workshare</b>             | 12             | 0     | 12         | 573              | 585                                  | 1,071         | 1,017    | 2,624         |
| <b>Workshare Equivalency</b> | 2              | 0     | 2          | 201              | 203                                  | 310           | 288      | 832           |
| <b>UI Exhaustions</b>        | -              | -     | -          | 427              | 427                                  | 425           | 467      | 481           |
| <b>EUC08 Exhaustions</b>     | -              | -     | -          | 152              | 152                                  | 133           | 189      | 150           |
| <b>EB Exhaustions</b>        | -              | -     | -          | 14               | 14                                   | 651           | 44       | 36            |
| <b>TDI Claims</b>            | 548            | 444   | 104        | 8,278            | 8,826                                | 7,384         | 8,005    | 8,998         |
| Change from:                 |                |       |            |                  |                                      |               |          |               |
| Previous Week                | -333           | -298  | -35        | 1,775            | 1,442                                |               |          |               |
| Year Ago                     | -158           | -149  | -9         | 979              | 821                                  |               |          |               |

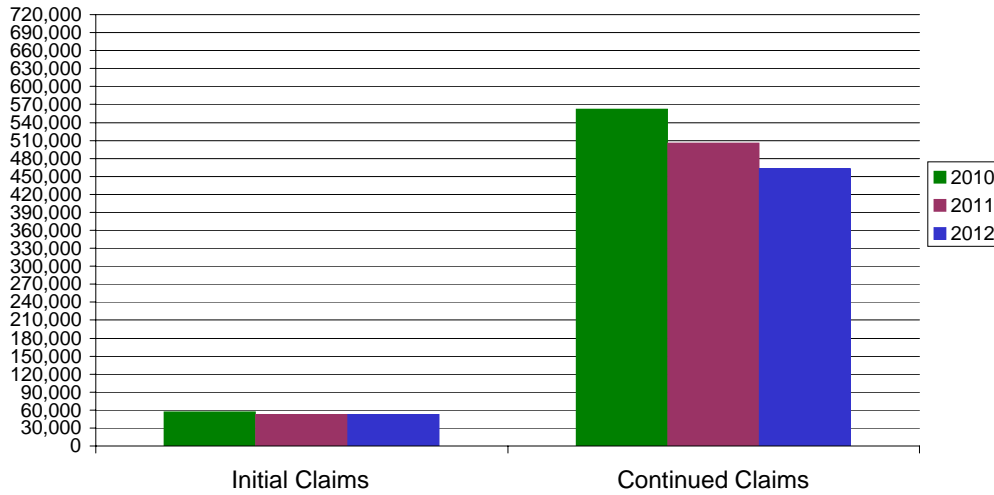
\* Includes UI, EUC08, EB, Workshare & Interstate Liable.

Equal Opportunity Employer / Program / Auxiliary aids and services available upon request to individuals with disabilities / TTY via RI Relay 711.

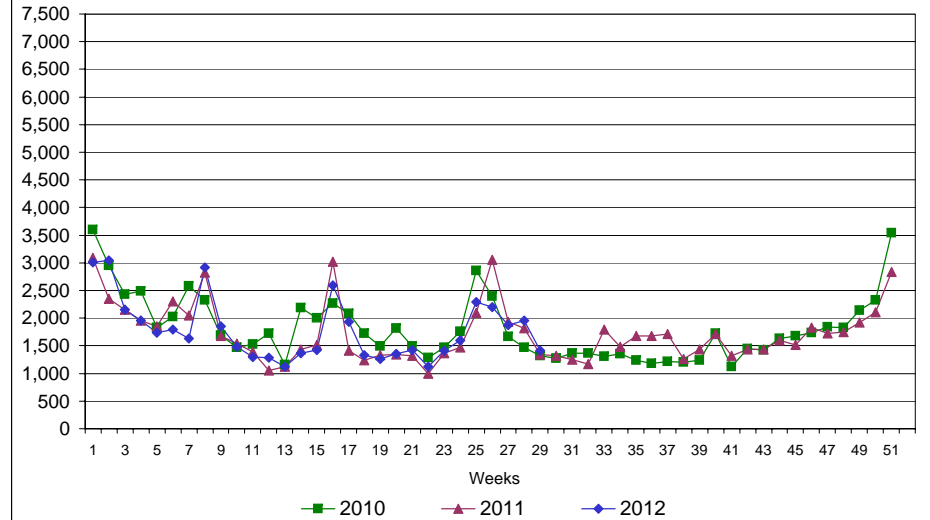
# Rhode Island Department of Labor and Training

## July 21, 2012

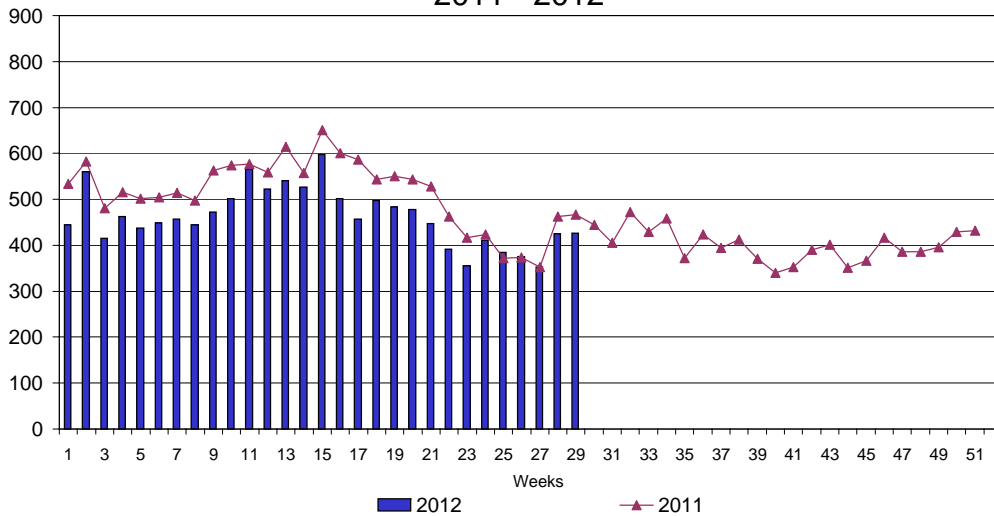
### UI Claims Comparison Year to Date



### UI Initial Claims 2010 - 2012



### UI Exhaustions 2011 - 2012



### TDI Claims Comparison Year to Date

