



Rhode Island Department of Labor and Training

Weekly Update of Claims Activity

Week Ending: July 28, 2012

Unemployment Insurance

Initial Claims – 1,405 initial claims were processed during the week ending 7/28/12, a decrease of 4 from the previous week, and an increase of 88 from a year ago. The number of initial claims filed to date is down 0.2 percent from last year and down 8.8 percent from two years ago.

Continued Claims – 14,461 continued claims were processed during the week of 7/28/12, a decrease of 264 from the previous week and a decrease of 1,196 from a year ago. The number of continued claims filed to date is down 8.4 percent from last year and down 17.6 percent from two years ago.

Workshare – gives employers an alternative to layoffs by allowing employees to work reduced hours and collect a percentage of regular UI benefits to compensate for lost pay. This week, 23 initial claims and 896 continued claims were processed. An estimated 7 layoffs were prevented this week, as a result of Workshare.

Emergency Unemployment Compensation 08 – EUC08, which became effective July 6, 2008, provides up to 53 weeks of federally funded benefits to eligible individuals who exhausted their UI claims. This week there were 337 new EUC08 claims processed and 9,484 continued claims processed (4,346 under tier I, 2,432 under tier II, 1,827 under tier III and 879 under tier IV).

Extended Benefits – based on data released by the Bureau of Labor Statistics on June 15, 2012, the three month average, seasonally adjusted total unemployment rate for Rhode Island (11.1) was not at least ten percent greater than the comparable rate in any of the three prior years, a necessary criterion for the program to remain on. Therefore, the payable period for the EB program in RI ended July 7, 2012.

Exhaustions – 405 individuals exhausted their regular payments this week, a decrease of 22 from a year ago. There were 169 individuals that exhausted EUC08 and 6 individuals that exhausted EB.

Temporary Disability Insurance

Temporary Disability Insurance – 1,007 initial claims and 7,339 continued claims were processed for Temporary Disability Insurance. The average weekly TDI payment is \$445 per week. Rhode Island is currently paying an average of 10.5 weeks per new claim.

	Initial Claims			Continued Claims	TOTAL - Initial and Continued Claims			
	Total	New	Additional		Current Week	Previous Week	Year Ago	Two Years Ago
Total - All programs*	1,971	1,164	807	25,333	27,304	27,260	33,611	40,186
UI Claims	1,405	802	603	14,461	15,866	16,134	16,974	18,599
Change from:								
Previous Week	-4	-55	51	-264	-268			
Year Ago	88	24	64	-1,196	-1,108			
Two Years Ago	129	13	116	-2,862	-2,733			
EUC08 Claims	516	337	179	9,484	10,000	9,974	13,893	9,828
Extended Benefits	4	2	2	25	29	72	1,472	9,210
Interstate-Liable	23	13	10	467	490	495	461	553
Workshare	23	10	13	896	919	585	811	1,996
Workshare Equivalency	7	4	3	231	238	203	262	521
UI Exhaustions	-	-	-	405	405	427	444	500
EUC08 Exhaustions	-	-	-	169	169	152	182	92
EB Exhaustions	-	-	-	6	6	14	71	48
TDI Claims	1,007	836	171	7,339	8,346	8,826	9,329	8,892
Change from:								
Previous Week	459	392	67	-939	-480			
Year Ago	34	19	15	-1,017	-983			

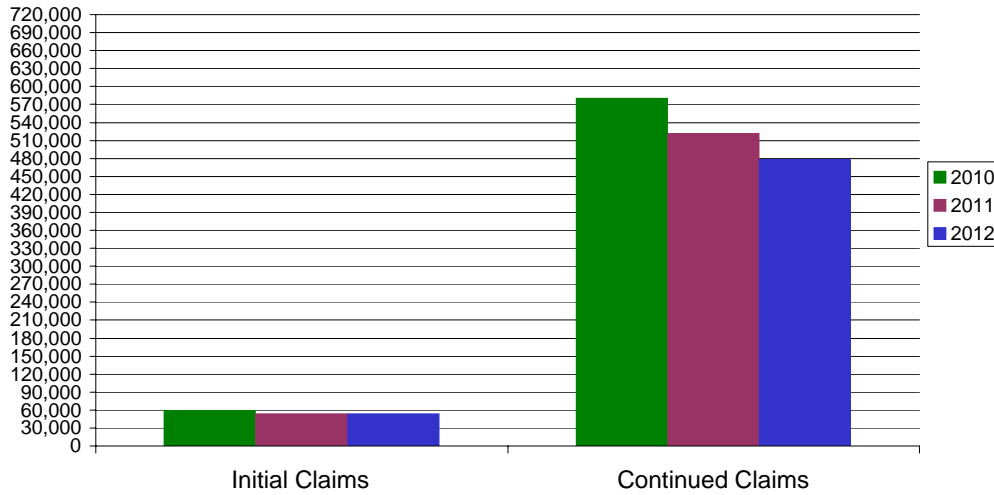
* Includes UI, EUC08, EB, Workshare & Interstate Liable.

Equal Opportunity Employer / Program / Auxiliary aids and services available upon request to individuals with disabilities / TTY via RI Relay 711.

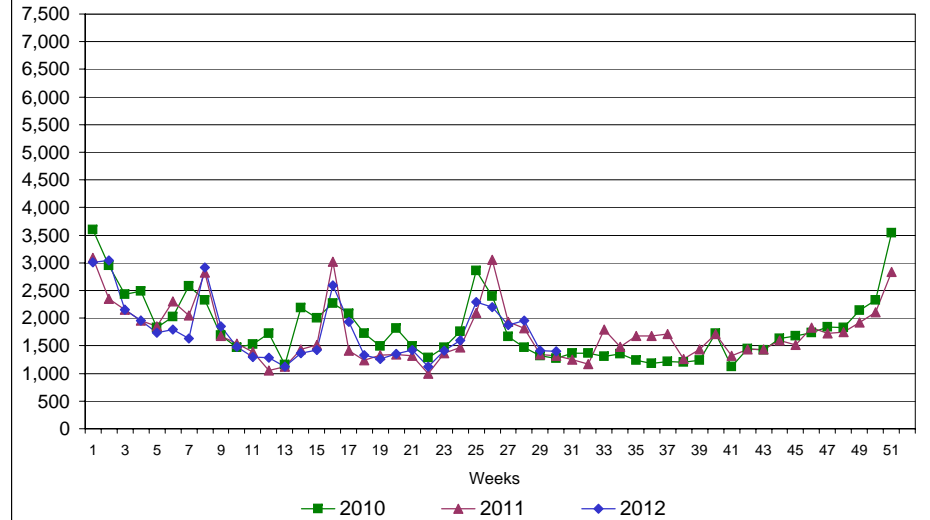
Rhode Island Department of Labor and Training

July 28, 2012

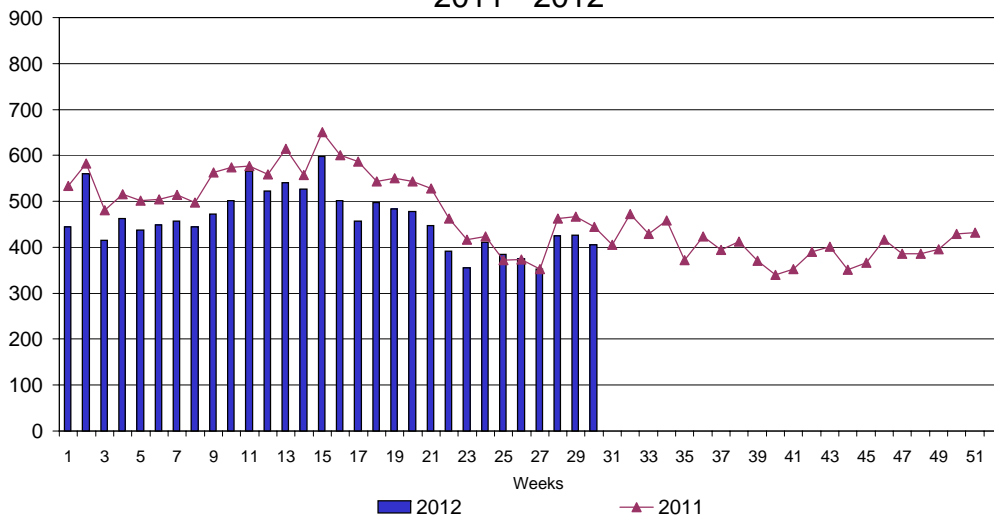
UI Claims Comparison Year to Date



UI Initial Claims 2010 - 2012



UI Exhaustions 2011 - 2012



TDI Claims Comparison Year to Date

