



Rhode Island Department of Labor and Training

Weekly Update of Claims Activity

Week Ending: August 4, 2012

Unemployment Insurance

Initial Claims – 1,222 initial claims were processed during the week ending 8/4/12, a decrease of 183 from the previous week, and a decrease of 32 from a year ago. The number of initial claims filed to date is down 0.3 percent from last year and down 8.8 percent from two years ago.

Continued Claims – 13,892 continued claims were processed during the week of 8/4/12, a decrease of 569 from the previous week and a decrease of 1,576 from a year ago. The number of continued claims filed to date is down 8.4 percent from last year and down 17.6 percent from two years ago.

Workshare – gives employers an alternative to layoffs by allowing employees to work reduced hours and collect a percentage of regular UI benefits to compensate for lost pay. This week, 44 initial claims and 651 continued claims were processed. An estimated 11 layoffs were prevented this week, as a result of Workshare.

Emergency Unemployment Compensation 08 – EUC08, which became effective July 6, 2008, provides up to 53 weeks of federally funded benefits to eligible individuals who exhausted their UI claims. This week there were 224 new EUC08 claims processed and 9,375 continued claims processed (4,285 under tier I, 2,450 under tier II, 1,828 under tier III and 812 under tier IV).

Extended Benefits – based on data released by the Bureau of Labor Statistics on June 15, 2012, the three month average, seasonally adjusted total unemployment rate for Rhode Island (11.1) was not at least ten percent greater than the comparable rate in any of the three prior years, a necessary criterion for the program to remain on. Therefore, the payable period for the EB program in RI ended July 7, 2012.

Exhaustions – 342 individuals exhausted their regular payments this week, a decrease of 63 from a year ago. There were 149 individuals that exhausted EUC08 and 3 individuals that exhausted EB.

Temporary Disability Insurance

Temporary Disability Insurance – 782 initial claims and 8,692 continued claims were processed for Temporary Disability Insurance. The average weekly TDI payment is \$446 per week. Rhode Island is currently paying an average of 10.6 weeks per new claim.

	Initial Claims			Continued Claims	TOTAL - Initial and Continued Claims			
	Total	New	Additional		Current Week	Previous Week	Year Ago	Two Years Ago
Total - All programs*	1,637	934	703	24,386	26,023	27,304	33,521	40,501
UI Claims	1,222	683	539	13,892	15,114	15,866	16,722	18,286
Change from:								
Previous Week	-183	-119	-64	-569	-752			
Year Ago	-32	-43	11	-1,576	-1,608			
Two Years Ago	-142	-159	17	-3,030	-3,172			
EUC08 Claims	343	224	119	9,375	9,718	10,000	14,016	10,134
Extended Benefits	1	0	1	10	11	29	1,453	9,033
Interstate-Liable	27	16	11	458	485	490	495	590
Workshare	44	11	33	651	695	919	835	2,458
Workshare Equivalency	11	4	7	170	181	238	199	667
UI Exhaustions	-	-	-	342	342	405	406	463
EUC08 Exhaustions	-	-	-	149	149	169	153	103
EB Exhaustions	-	-	-	3	3	6	117	63
TDI Claims	782	649	133	8,692	9,474	8,346	8,377	8,623
Change from:								
Previous Week	-225	-187	-38	1,353	1,128			
Year Ago	-154	-132	-22	1,251	1,097			

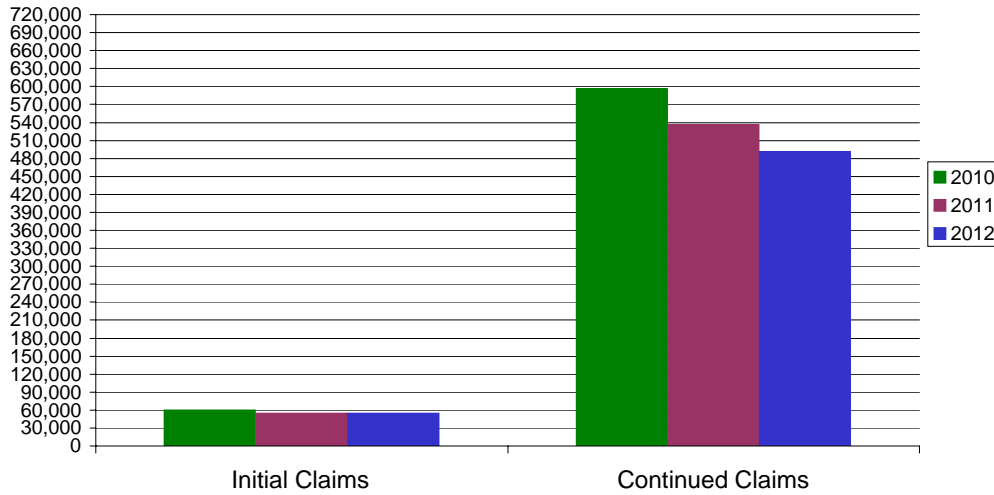
* Includes UI, EUC08, EB, Workshare & Interstate Liable.

Equal Opportunity Employer / Program / Auxiliary aids and services available upon request to individuals with disabilities / TTY via RI Relay 711.

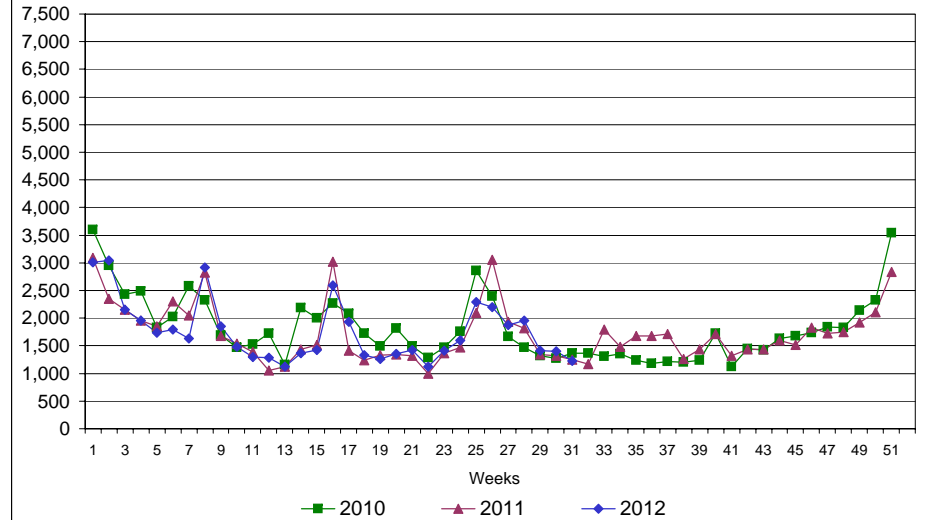
Rhode Island Department of Labor and Training

August 4, 2012

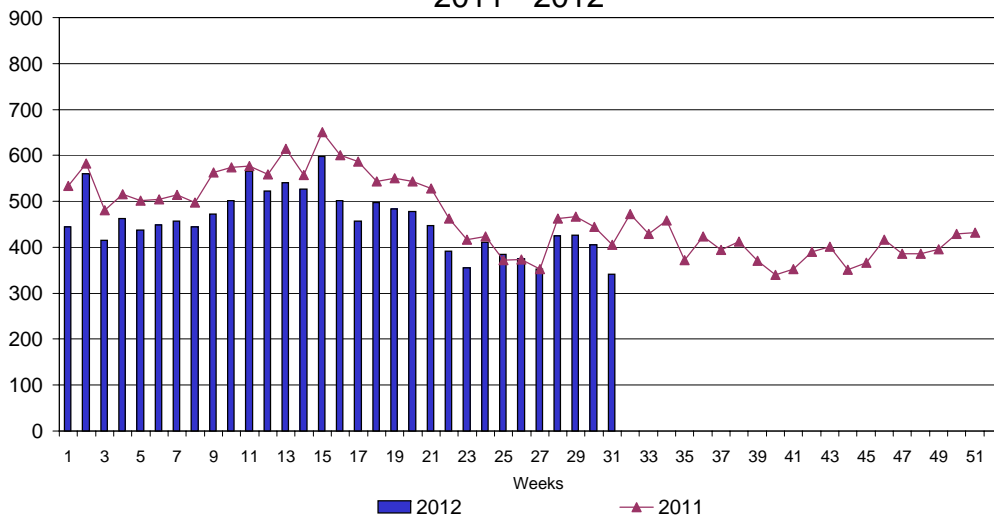
UI Claims Comparison Year to Date



UI Initial Claims 2010 - 2012



UI Exhaustions 2011 - 2012



TDI Claims Comparison Year to Date

