



Rhode Island Department of Labor and Training

Weekly Update of Claims Activity

Week Ending: August 11, 2012

Unemployment Insurance

Initial Claims – 1,349 initial claims were processed during the week ending 8/11/12, an increase of 127 from the previous week, and an increase of 183 from a year ago. The number of initial claims filed to date is up 0.1 percent from last year and down 8.7 percent from two years ago.

Continued Claims – 13,520 continued claims were processed during the week of 8/11/12, a decrease of 372 from the previous week and a decrease of 1,665 from a year ago. The number of continued claims filed to date is down 8.5 percent from last year and down 17.7 percent from two years ago.

Workshare – gives employers an alternative to layoffs by allowing employees to work reduced hours and collect a percentage of regular UI benefits to compensate for lost pay. This week, 18 initial claims and 766 continued claims were processed. An estimated 6 layoffs were prevented this week, as a result of Workshare.

Emergency Unemployment Compensation 08 – EUC08, which became effective July 6, 2008, provides up to 53 weeks of federally funded benefits to eligible individuals who exhausted their UI claims. This week there were 315 new EUC08 claims processed and 9,207 continued claims processed (4,210 under tier I, 2,448 under tier II, 1,756 under tier III and 793 under tier IV).

Extended Benefits – based on data released by the Bureau of Labor Statistics on June 15, 2012, the three month average, seasonally adjusted total unemployment rate for Rhode Island (11.1) was not at least ten percent greater than the comparable rate in any of the three prior years, a necessary criterion for the program to remain on. Therefore, the payable period for the EB program in RI ended July 7, 2012.

Exhaustions – 376 individuals exhausted their regular payments this week, an increase of 34 from a year ago. There were 152 individuals that exhausted EUC08.

Temporary Disability Insurance

Temporary Disability Insurance – 1,015 initial claims and 7,357 continued claims were processed for Temporary Disability Insurance. The average weekly TDI payment is \$442 per week. Rhode Island is currently paying an average of 10.5 weeks per new claim.

	Initial Claims			Continued Claims	TOTAL - Initial and Continued Claims			
	Total	New	Additional		Current Week	Previous Week	Year Ago	Two Years Ago
Total - All programs*	1,844	1,104	740	23,958	25,802	26,023	33,210	39,017
UI Claims	1,349	763	586	13,520	14,869	15,114	16,351	18,014
Change from:								
Previous Week	127	80	47	-372	-245			
Year Ago	183	105	78	-1,665	-1,482			
Two Years Ago	-14	-21	7	-3,131	-3,145			
EUC08 Claims	456	315	141	9,207	9,663	9,718	13,917	10,161
Extended Benefits	4	1	3	6	10	11	1,435	8,886
Interstate-Liable	17	11	6	459	476	485	444	646
Workshare	18	14	4	766	784	695	1,063	1,310
Workshare Equivalency	6	5	1	201	207	181	267	329
UI Exhaustions	-	-	-	376	376	342	472	465
EUC08 Exhaustions	-	-	-	152	152	149	215	109
EB Exhaustions	-	-	-	0	0	3	101	74
TDI Claims	1,015	833	182	7,357	8,372	9,474	7,753	8,064
Change from:								
Previous Week	233	184	49	-1,335	-1,102			
Year Ago	436	342	94	183	619			

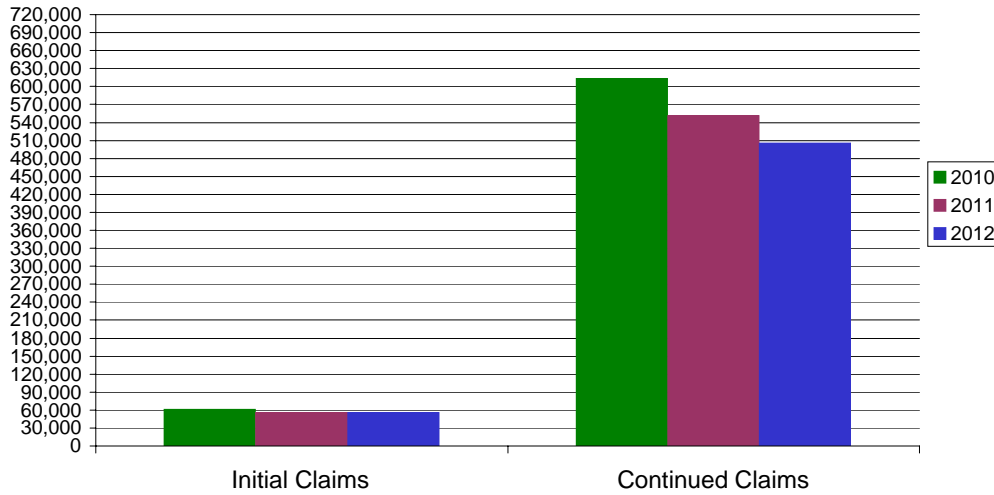
* Includes UI, EUC08, EB, Workshare & Interstate Liable.

Equal Opportunity Employer / Program / Auxiliary aids and services available upon request to individuals with disabilities / TTY via RI Relay 711.

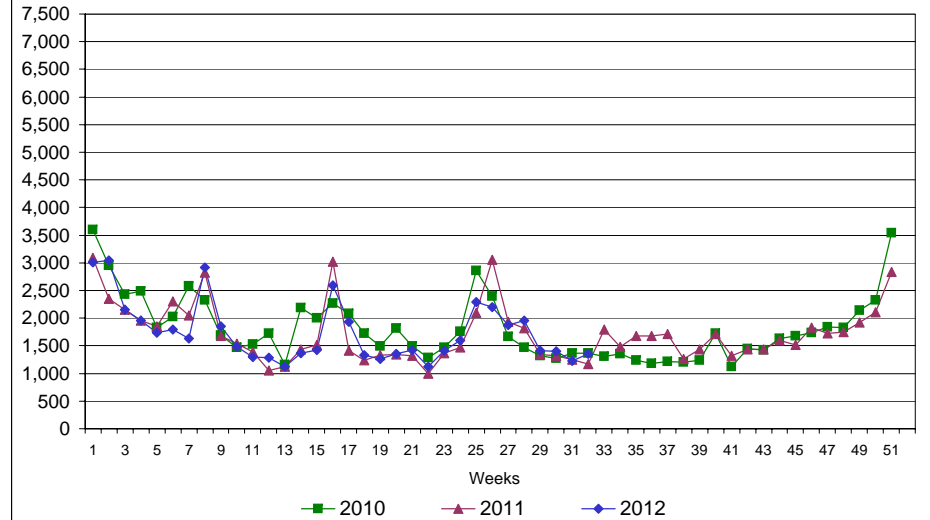
Rhode Island Department of Labor and Training

August 11, 2012

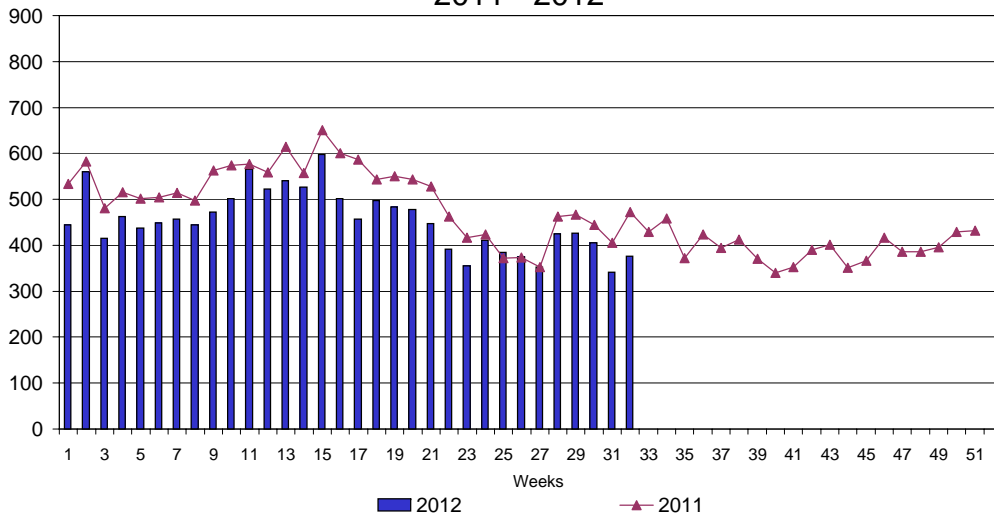
UI Claims Comparison Year to Date



UI Initial Claims 2010 - 2012



UI Exhaustions 2011 - 2012



TDI Claims Comparison Year to Date

