



## Rhode Island Department of Labor and Training

# *Weekly Update of Claims Activity*

*Week Ending: August 18, 2012*

### **Unemployment Insurance**

**Initial Claims** – 1,200 initial claims were processed during the week ending 8/18/12, a decrease of 149 from the previous week, and a decrease of 599 from a year ago. The number of initial claims filed to date is down 1.0 percent from last year and down 8.7 percent from two years ago.

**Continued Claims** – 13,000 continued claims were processed during the week of 8/12/12, a decrease of 520 from the previous week and a decrease of 2,395 from a year ago. The number of continued claims filed to date is down 8.7 percent from last year and down 17.8 percent from two years ago.

**Workshare** – gives employers an alternative to layoffs by allowing employees to work reduced hours and collect a percentage of regular UI benefits to compensate for lost pay. This week, 4 initial claims and 550 continued claims were processed. An estimated 2 layoffs were prevented this week, as a result of Workshare.

**Emergency Unemployment Compensation 08** – EUC08, which became effective July 6, 2008, provides up to 53 weeks of federally funded benefits to eligible individuals who exhausted their UI claims. This week there were 211 new EUC08 claims processed and 8,896 continued claims processed (4,097 under tier I, 2,349 under tier II, 1,723 under tier III and 727 under tier IV).

**Extended Benefits** – based on data released by the Bureau of Labor Statistics on June 15, 2012, the three month average, seasonally adjusted total unemployment rate for Rhode Island (11.1) was not at least ten percent greater than the comparable rate in any of the three prior years, a necessary criterion for the program to remain on. Therefore, the payable period for the EB program in RI ended July 7, 2012.

**Exhaustions** – 337 individuals exhausted their regular payments this week, a decrease of 39 from a year ago. There were 151 individuals that exhausted EUC08.

### **Temporary Disability Insurance**

**Temporary Disability Insurance** – 685 initial claims and 7,125 continued claims were processed for Temporary Disability Insurance. The average weekly TDI payment is \$443 per week. Rhode Island is currently paying an average of 10.5 weeks per new claim.

	Initial Claims			Continued Claims	TOTAL - Initial and Continued Claims			
	Total	New	Additional		Current Week	Previous Week	Year Ago	Two Years Ago
<b>Total - All programs*</b>	1,515	891	624	22,874	24,389	25,802	34,004	40,103
<b>UI Claims</b>	1,200	672	528	13,000	14,200	14,869	17,194	18,237
Change from:								
Previous Week	-149	-91	-58	-520	-669			
Year Ago	-599	-493	-106	-2,395	-2,994			
Two Years Ago	-112	-124	12	-3,925	-4,037			
<b>EUC08 Claims</b>	296	211	85	8,896	9,192	9,663	13,964	10,446
<b>Extended Benefits</b>	1	0	1	2	3	10	1,463	8,753
<b>Interstate-Liable</b>	14	8	6	426	440	476	453	537
<b>Workshare</b>	4	0	4	550	554	784	930	2,130
<b>Workshare Equivalency</b>	2	0	2	193	195	207	293	562
<b>UI Exhaustions</b>	-	-	-	337	337	376	429	480
<b>EUC08 Exhaustions</b>	-	-	-	151	151	152	250	136
<b>EB Exhaustions</b>	-	-	-	0	0	0	83	142
<b>TDI Claims</b>	685	579	106	7,125	7,810	8,372	9,150	8,946
Change from:								
Previous Week	-330	-254	-76	-232	-562			
Year Ago	-203	-157	-46	-1,137	-1,340			

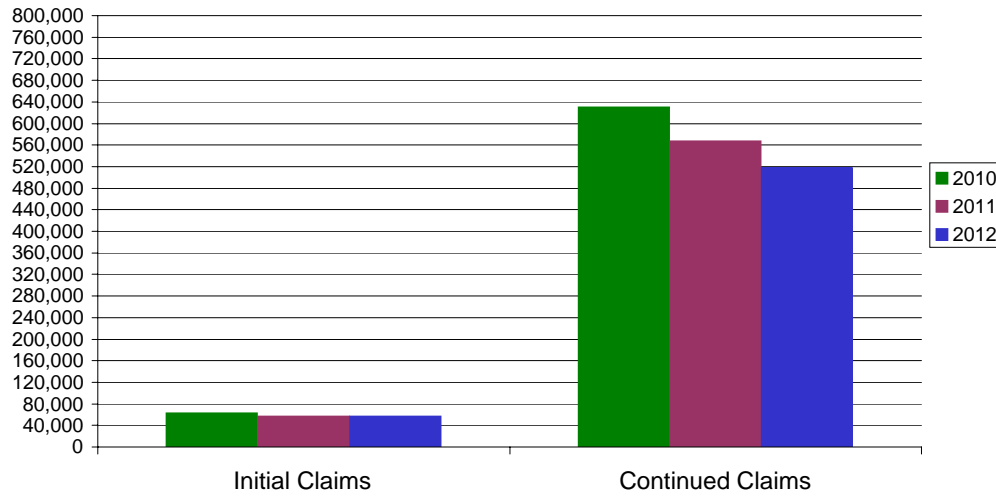
\* Includes UI, EUC08, EB, Workshare & Interstate Liable.

Equal Opportunity Employer / Program / Auxiliary aids and services available upon request to individuals with disabilities / TTY via RI Relay 711.

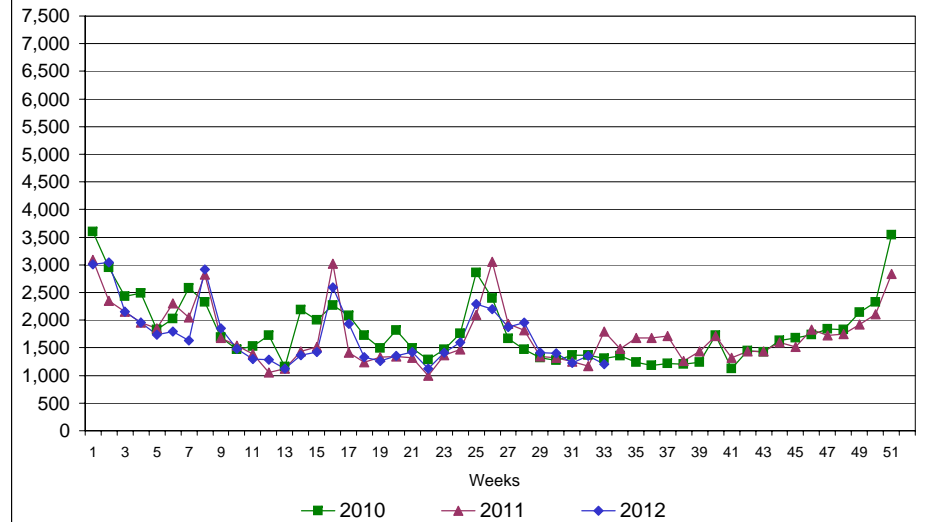
# Rhode Island Department of Labor and Training

## August 18, 2012

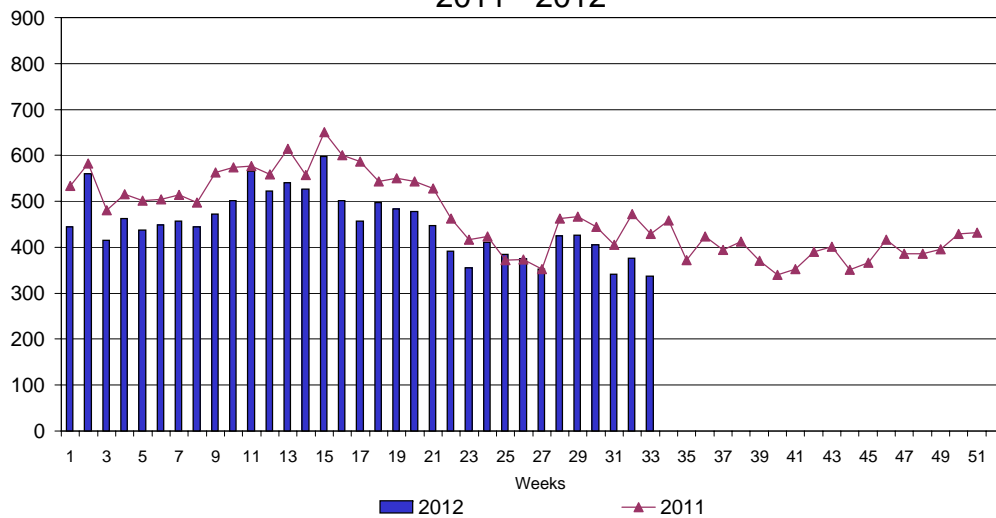
### UI Claims Comparison Year to Date



### UI Initial Claims 2010 - 2012



### UI Exhaustions 2011 - 2012



### TDI Claims Comparison Year to Date

