



## Rhode Island Department of Labor and Training

# *Weekly Update of Claims Activity*

*Week Ending: August 25, 2012*

### *Unemployment Insurance*

**Initial Claims** – 1,264 initial claims were processed during the week ending 8/25/12, an increase of 64 from the previous week, and a decrease of 219 from a year ago. The number of initial claims filed to date is down 1.3 percent from last year and down 8.6 percent from two years ago.

**Continued Claims** – 12,759 continued claims were processed during the week of 8/25/12, a decrease of 241 from the previous week and a decrease of 3,013 from a year ago. The number of continued claims filed to date is down 9.0 percent from last year and down 18.0 percent from two years ago.

**Workshare** – gives employers an alternative to layoffs by allowing employees to work reduced hours and collect a percentage of regular UI benefits to compensate for lost pay. This week, 17 initial claims and 557 continued claims were processed. An estimated 5 layoffs were prevented this week, as a result of Workshare.

**Emergency Unemployment Compensation 08** – EUC08, which became effective July 6, 2008, provides up to 53 weeks of federally funded benefits to eligible individuals who exhausted their UI claims. This week there were 305 new EUC08 claims processed and 8,831 continued claims processed (4,107 under tier I, 2,323 under tier II, 1,678 under tier III and 723 under tier IV).

**Exhaustions** – 349 individuals exhausted their regular payments this week, an increase of 12 from a year ago. There were 141 individuals that exhausted EUC08.

### *Temporary Disability Insurance*

**Temporary Disability Insurance** – 908 initial claims and 7,718 continued claims were processed for Temporary Disability Insurance. The average weekly TDI payment is \$438 per week. Rhode Island is currently paying an average of 10.5 weeks per new claim.

	Initial Claims			Continued Claims	TOTAL - Initial and Continued Claims			
	Total	New	Additional		Current Week	Previous Week	Year Ago	Two Years Ago
<b>Total - All programs*</b>	1,810	946	864	22,578	24,388	24,389	35,036	39,937
<b>UI Claims</b>	1,264	615	649	12,759	14,023	14,200	17,255	18,137
Change from:								
Previous Week	64	-57	121	-241	-177			
Year Ago	-219	-342	123	-3,013	-3,232			
Two Years Ago	-86	-148	62	-4,028	-4,114			
<b>EUC08 Claims</b>	495	305	190	8,831	9,326	9,192	14,068	10,673
<b>Extended Benefits</b>	1	0	1	0	1	3	1,462	8,620
<b>Interstate-Liable</b>	33	17	16	431	464	440	478	559
<b>Workshare</b>	17	9	8	557	574	554	1,773	1,948
<b>Workshare Equivalency</b>	5	3	2	165	170	195	298	597
<b>UI Exhaustions</b>	-	-	-	349	349	337	459	473
<b>EUC08 Exhaustions</b>	-	-	-	141	141	151	215	151
<b>EB Exhaustions</b>	-	-	-	0	0	0	95	183
<b>TDI Claims</b>	908	758	150	7,718	8,626	7,810	9,004	9,030
Change from:								
Previous Week	223	179	44	593	816			
Year Ago	68	65	3	-446	-378			

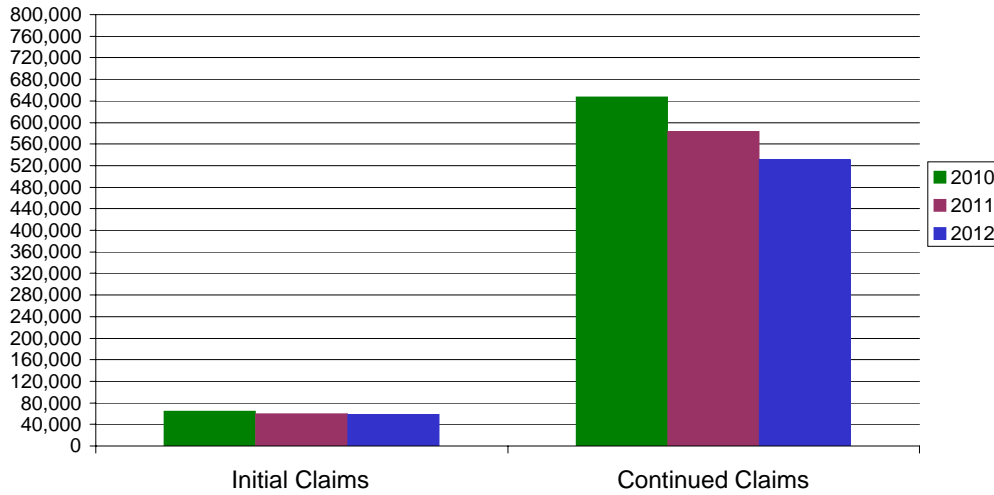
\* Includes UI, EUC08, EB, Workshare & Interstate Liable.

Equal Opportunity Employer / Program / Auxiliary aids and services available upon request to individuals with disabilities / TTY via RI Relay 711.

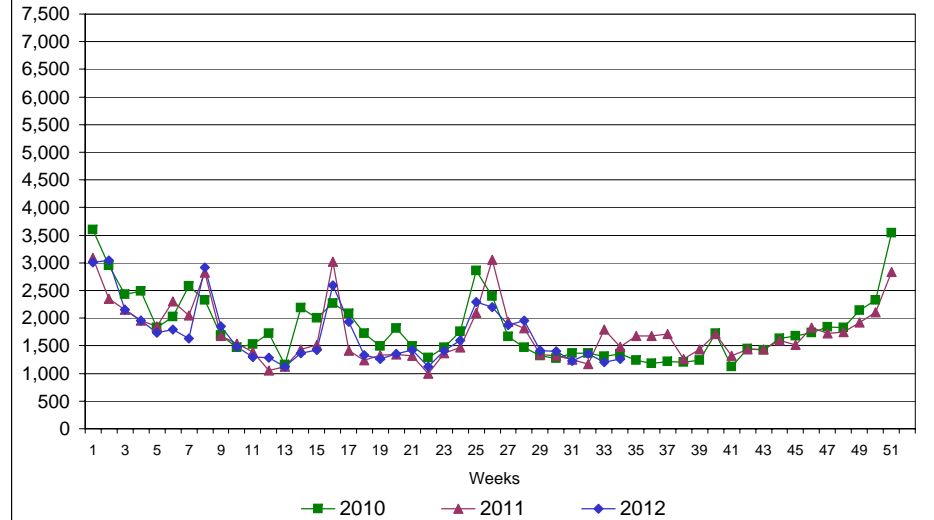
# Rhode Island Department of Labor and Training

## August 25, 2012

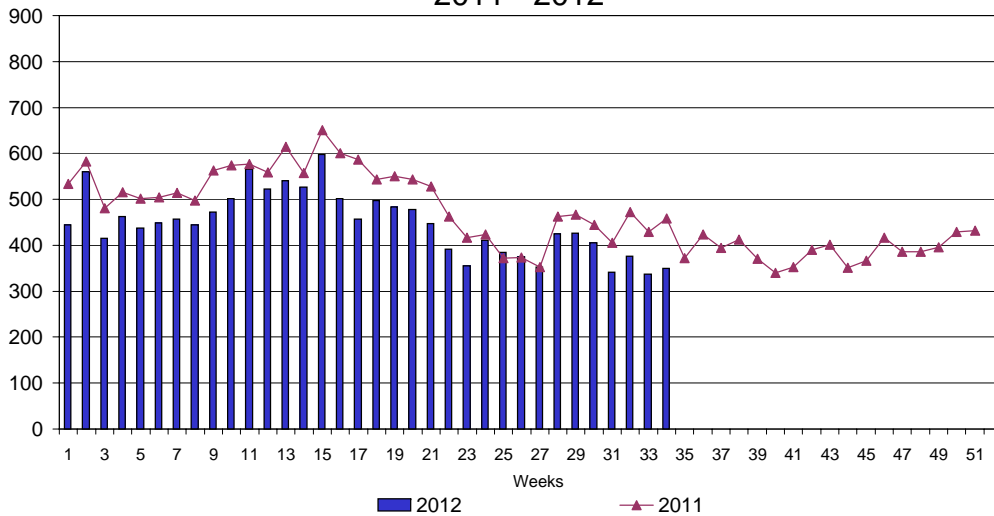
### UI Claims Comparison Year to Date



### UI Initial Claims 2010 - 2012



### UI Exhaustions 2011 - 2012



### TDI Claims Comparison Year to Date

