



Rhode Island Department of Labor and Training

Weekly Update of Claims Activity

Week Ending: September 1, 2012

Unemployment Insurance

Initial Claims – 943 initial claims were processed during the week ending 9/1/12, a decrease of 321 from the previous week, and a decrease of 735 from a year ago. The number of initial claims filed to date is down 2.5 percent from last year and down 8.9 percent from two years ago. Initial claims for September 2011 were unusually high as a result of Hurricane Irene.

Continued Claims – 12,974 continued claims were processed during the week of 9/1/12, an increase of 215 from the previous week and a decrease of 1,628 from a year ago. The number of continued claims filed to date is down 9.0 percent from last year and down 18.1 percent from two years ago.

Workshare – gives employers an alternative to layoffs by allowing employees to work reduced hours and collect a percentage of regular UI benefits to compensate for lost pay. This week, 83 initial claims and 593 continued claims were processed. An estimated 25 layoffs were prevented this week, as a result of Workshare.

Emergency Unemployment Compensation 08 – EUC08, which became effective July 6, 2008, provides up to 53 weeks of federally funded benefits to eligible individuals who exhausted their UI claims. This week there were 284 new EUC08 claims processed and 9,058 continued claims processed (4,169 under tier I, 2,431 under tier II, 1,700 under tier III and 758 under tier IV).

Exhaustions – 295 individuals exhausted their regular payments this week, a decrease of 54 from a year ago. There were 132 individuals that exhausted EUC08.

Temporary Disability Insurance

Temporary Disability Insurance – 618 initial claims and 8,163 continued claims were processed for Temporary Disability Insurance. The average weekly TDI payment is \$432 per week. Rhode Island is currently paying an average of 10.6 weeks per new claim.

	Initial Claims			Continued Claims	TOTAL - Initial and Continued Claims			
	Total	New	Additional		Current Week	Previous Week	Year Ago	Two Years Ago
Total - All programs*	1,547	876	671	23,075	24,622	24,388	33,137	39,679
UI Claims	943	516	427	12,974	13,917	14,023	16,280	17,682
Change from:								
Previous Week	-321	-99	-222	215	-106			
Year Ago	-735	-500	-235	-1,628	-2,363			
Two Years Ago	-290	-243	-47	-3,475	-3,765			
EUC08 Claims	484	284	200	9,058	9,542	9,326	13,896	10,958
Extended Benefits	6	0	6	3	9	1	1,460	8,468
Interstate-Liable	31	19	12	447	478	464	498	618
Workshare	83	57	26	593	676	574	1,003	1,953
Workshare Equivalency	25	16	9	169	194	170	259	548
UI Exhaustions	-	-	-	295	295	349	372	462
EUC08 Exhaustions	-	-	-	132	132	141	209	229
EB Exhaustions	-	-	-	0	0	0	94	231
TDI Claims	618	512	106	8,163	8,781	8,626	8,868	9,124
Change from:								
Previous Week	-290	-246	-44	445	155			
Year Ago	-147	-124	-23	60	-87			

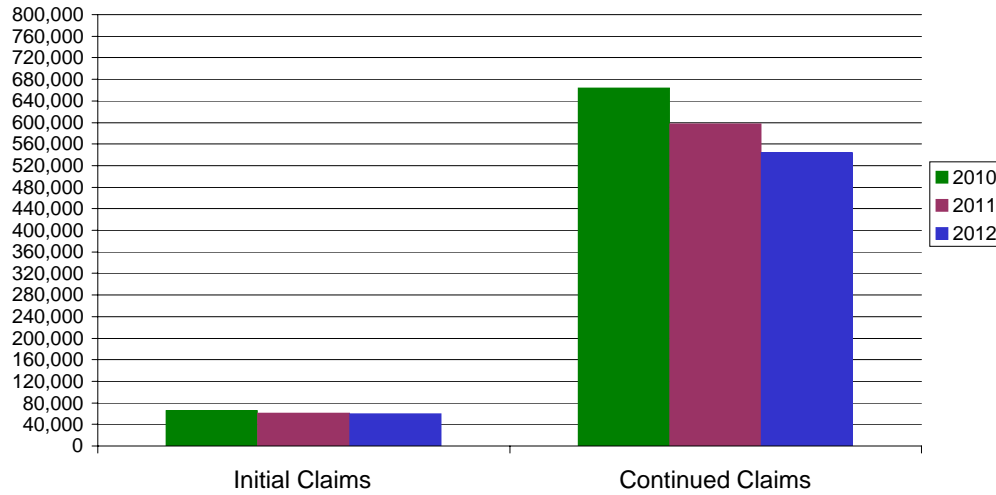
* Includes UI, EUC08, EB, Workshare & Interstate Liable.

Equal Opportunity Employer / Program / Auxiliary aids and services available upon request to individuals with disabilities / TTY via RI Relay 711.

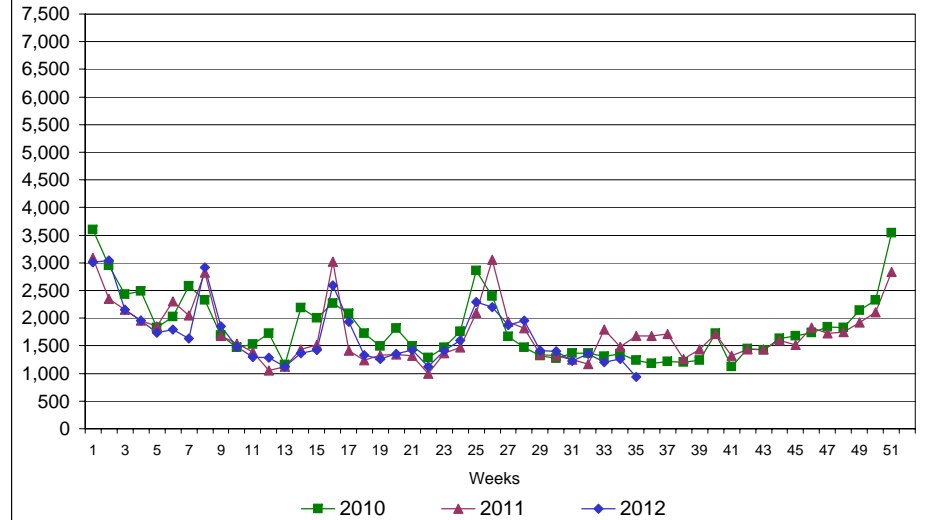
Rhode Island Department of Labor and Training

September 1, 2012

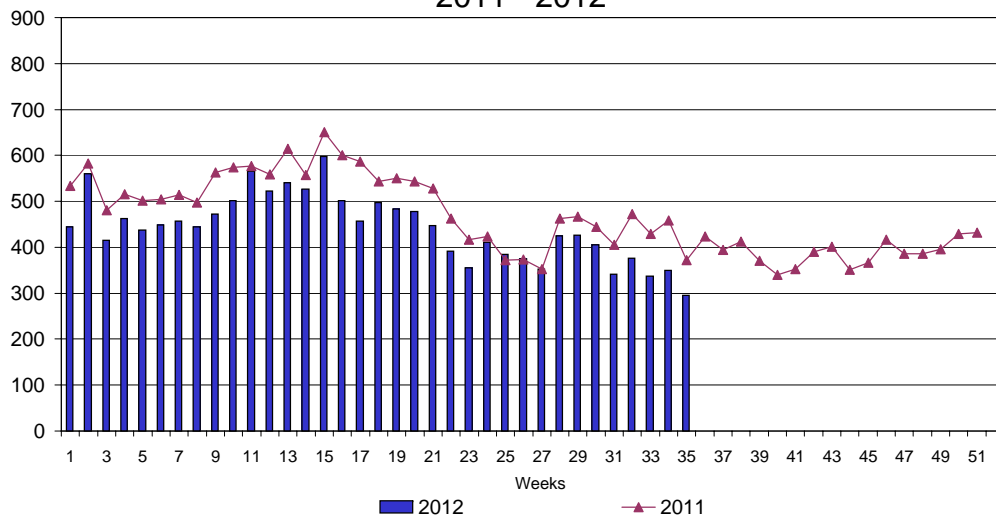
UI Claims Comparison Year to Date



UI Initial Claims 2010 - 2012



UI Exhaustions 2011 - 2012



TDI Claims Comparison Year to Date

