



## Rhode Island Department of Labor and Training

# *Weekly Update of Claims Activity*

*Week Ending: September 8, 2012*

### *Unemployment Insurance*

**Initial Claims** – 1,185 initial claims were processed during the week ending 9/8/12, an increase of 242 from the previous week, and a decrease of 494 from a year ago. The number of initial claims filed to date is down 3.2 percent from last year and down 8.7 percent from two years ago. Initial claims for September 2011 were unusually high as a result of Hurricane Irene.

**Continued Claims** – 11,069 continued claims were processed during the week of 9/8/12, a decrease of 1,905 from the previous week and a decrease of 3,007 from a year ago. The number of continued claims filed to date is down 9.3 percent from last year and down 18.1 percent from two years ago.

**Workshare** – gives employers an alternative to layoffs by allowing employees to work reduced hours and collect a percentage of regular UI benefits to compensate for lost pay. This week, 24 initial claims and 652 continued claims were processed. An estimated 7 layoffs were prevented this week, as a result of Workshare.

**Emergency Unemployment Compensation 08** – EUC08, which became effective July 6, 2008, provides up to 53 weeks of federally funded benefits to eligible individuals who exhausted their UI claims. This week there were 224 new EUC08 claims processed and 8,642 continued claims processed (3,875 under tier I, 2,383 under tier II, 1,668 under tier III and 716 under tier IV).

**Exhaustions** – 307 individuals exhausted their regular payments this week, an increase of 12 from a year ago. There were 125 individuals that exhausted EUC08.

### *Temporary Disability Insurance*

**Temporary Disability Insurance** – 381 initial claims and 6,851 continued claims were processed for Temporary Disability Insurance. The average weekly TDI payment is \$432 per week. Rhode Island is currently paying an average of 10.6 weeks per new claim.

	Initial Claims			Continued Claims	TOTAL - Initial and Continued Claims			
	Total	New	Additional		Current Week	Previous Week	Year Ago	Two Years Ago
<b>Total - All programs*</b>	1,605	1,095	510	20,830	22,435	24,622	32,674	36,673
<b>UI Claims</b>	1,185	834	351	11,069	12,254	13,917	15,755	15,468
Change from:								
Previous Week	242	318	-76	-1,905	-1,663			
Year Ago	-494	-63	-431	-3,007	-3,501			
Two Years Ago	3	113	-110	-3,217	-3,214			
<b>EUC08 Claims</b>	368	224	144	8,642	9,010	9,542	13,753	10,938
<b>Extended Benefits</b>	2	1	1	1	3	9	1,448	8,252
<b>Interstate-Liable</b>	26	18	8	466	492	478	480	546
<b>Workshare</b>	24	18	6	652	676	676	1,238	1,469
<b>Workshare Equivalency</b>	7	5	2	188	195	194	324	367
<b>UI Exhaustions</b>	-	-	-	307	307	295	423	460
<b>EUC08 Exhaustions</b>	-	-	-	125	125	132	283	273
<b>EB Exhaustions</b>	-	-	-	0	0	0	43	259
<b>TDI Claims</b>	381	304	77	6,851	7,232	8,781	7,633	8,345
Change from:								
Previous Week	-237	-208	-29	-1,312	-1,549			
Year Ago	-273	-237	-36	-128	-401			

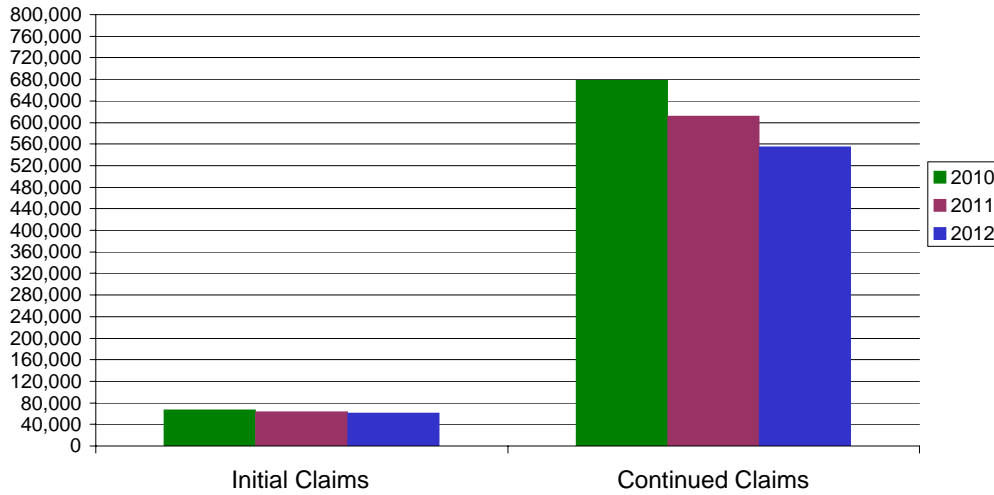
\* Includes UI, EUC08, EB, Workshare & Interstate Liable.

Equal Opportunity Employer / Program / Auxiliary aids and services available upon request to individuals with disabilities / TTY via RI Relay 711.

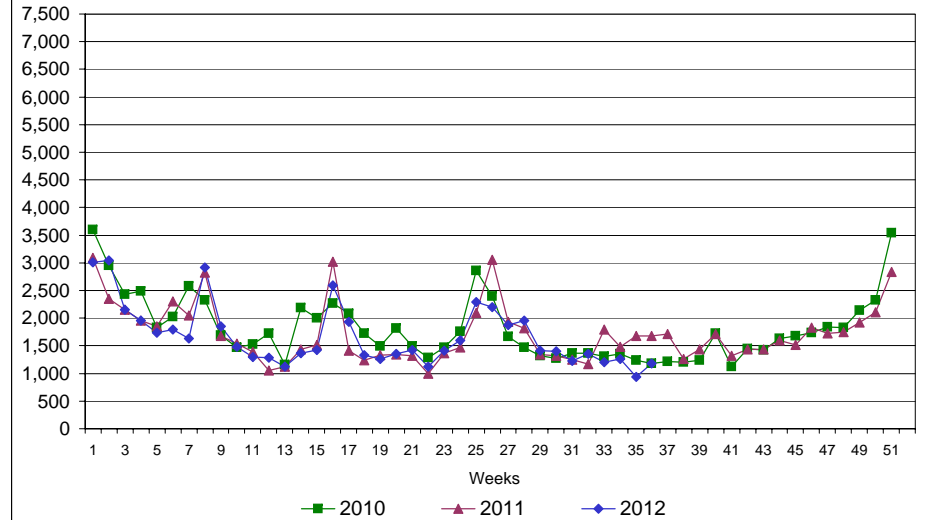
# Rhode Island Department of Labor and Training

## September 8, 2012

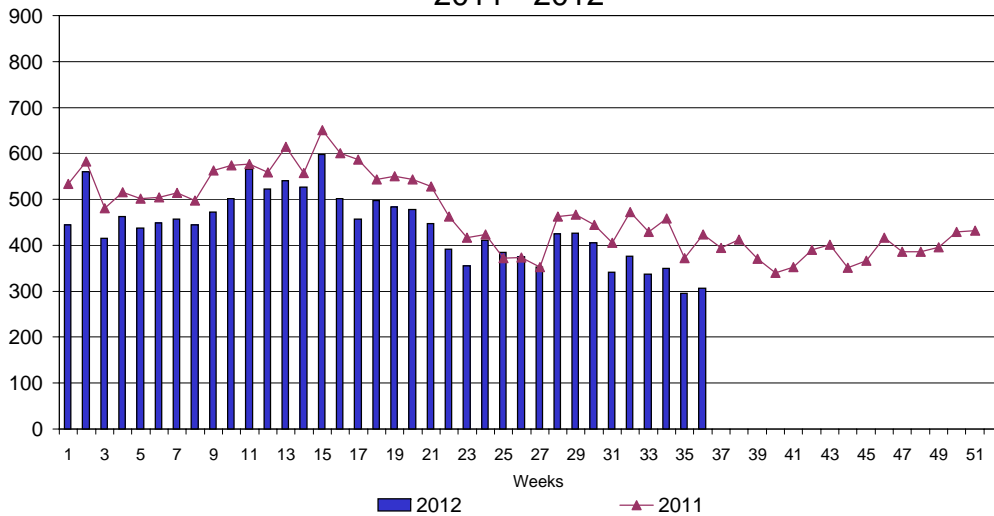
### UI Claims Comparison Year to Date



### UI Initial Claims 2010 - 2012



### UI Exhaustions 2011 - 2012



### TDI Claims Comparison Year to Date

