



## Rhode Island Department of Labor and Training

# *Weekly Update of Claims Activity*

*Week Ending: September 15, 2012*

### *Unemployment Insurance*

**Initial Claims** – 1,199 initial claims were processed during the week ending 9/15/12, an increase of 14 from the previous week, and a decrease of 514 from a year ago. The number of initial claims filed to date is down 3.9 percent from last year and down 8.6 percent from two years ago. Initial claims for September 2011 were unusually high as a result of Hurricane Irene.

**Continued Claims** – 10,796 continued claims were processed during the week of 9/15/12, a decrease of 273 from the previous week and a decrease of 1,903 from a year ago. The number of continued claims filed to date is down 9.4 percent from last year and down 18.2 percent from two years ago.

**Workshare** – gives employers an alternative to layoffs by allowing employees to work reduced hours and collect a percentage of regular UI benefits to compensate for lost pay. This week, 19 initial claims and 481 continued claims were processed. An estimated 6 layoffs were prevented this week, as a result of Workshare.

**Emergency Unemployment Compensation 08** – EUC08, which became effective July 6, 2008, provides up to 53 weeks of federally funded benefits to eligible individuals who exhausted their UI claims. This week there were 414 new EUC08 claims processed and 8,905 continued claims processed (4,014 under tier I, 2,402 under tier II, 1,714 under tier III and 775 under tier IV).

**Exhaustions** – 327 individuals exhausted their regular payments this week, an increase of 20 from a year ago. There were 133 individuals that exhausted EUC08.

### *Temporary Disability Insurance*

**Temporary Disability Insurance** – 1,079 initial claims and 8,185 continued claims were processed for Temporary Disability Insurance. The average weekly TDI payment is \$436 per week. Rhode Island is currently paying an average of 10.6 weeks per new claim.

	Initial Claims			Continued Claims	TOTAL - Initial and Continued Claims			
	Total	New	Additional		Current Week	Previous Week	Year Ago	Two Years Ago
<b>Total - All programs*</b>	1,877	1,012	865	20,622	22,499	22,435	31,751	37,137
<b>UI Claims</b>	1,199	564	635	10,796	11,995	12,254	14,412	15,186
Change from:								
Previous Week	14	-270	284	-273	-259			
Year Ago	-514	-546	32	-1,903	-2,417			
Two Years Ago	-17	-191	174	-3,174	-3,191			
<b>EUC08 Claims</b>	632	414	218	8,905	9,537	9,010	13,924	11,177
<b>Extended Benefits</b>	2	0	2	0	2	3	1,592	8,014
<b>Interstate-Liable</b>	25	17	8	440	465	492	493	586
<b>Workshare</b>	19	17	2	481	500	676	1,330	2,174
<b>Workshare Equivalency</b>	6	6	0	180	186	195	384	547
<b>UI Exhaustions</b>	-	-	-	327	327	307	394	419
<b>EUC08 Exhaustions</b>	-	-	-	133	133	125	245	262
<b>EB Exhaustions</b>	-	-	-	0	0	0	53	342
<b>TDI Claims</b>	1,079	905	174	8,185	9,264	7,232	8,275	9,502
Change from:								
Previous Week	698	601	97	1,334	2,032			
Year Ago	262	236	26	727	989			

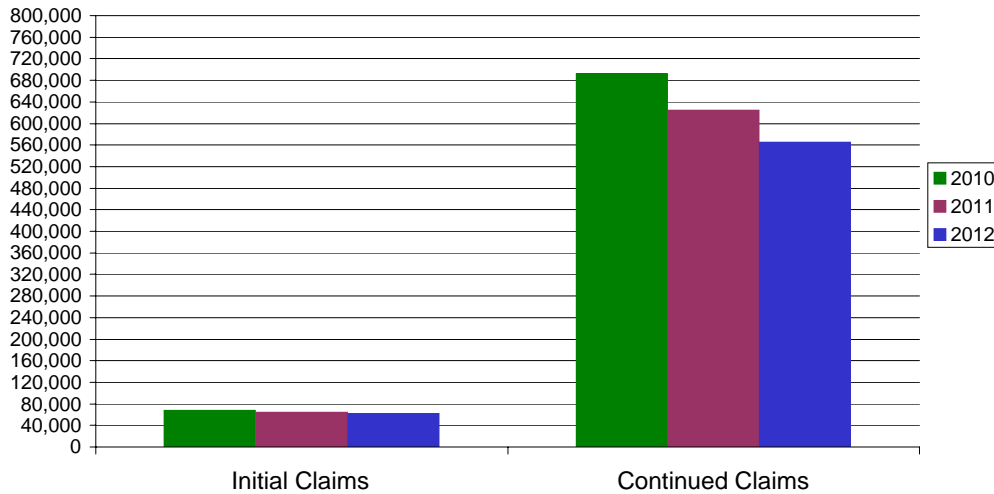
\* Includes UI, EUC08, EB, Workshare & Interstate Liable.

Equal Opportunity Employer / Program / Auxiliary aids and services available upon request to individuals with disabilities / TTY via RI Relay 711.

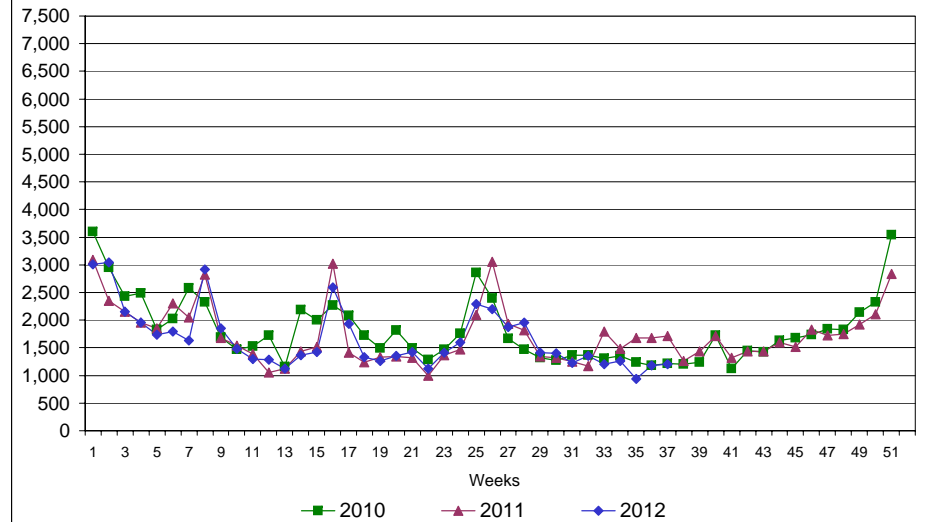
# Rhode Island Department of Labor and Training

## September 15, 2012

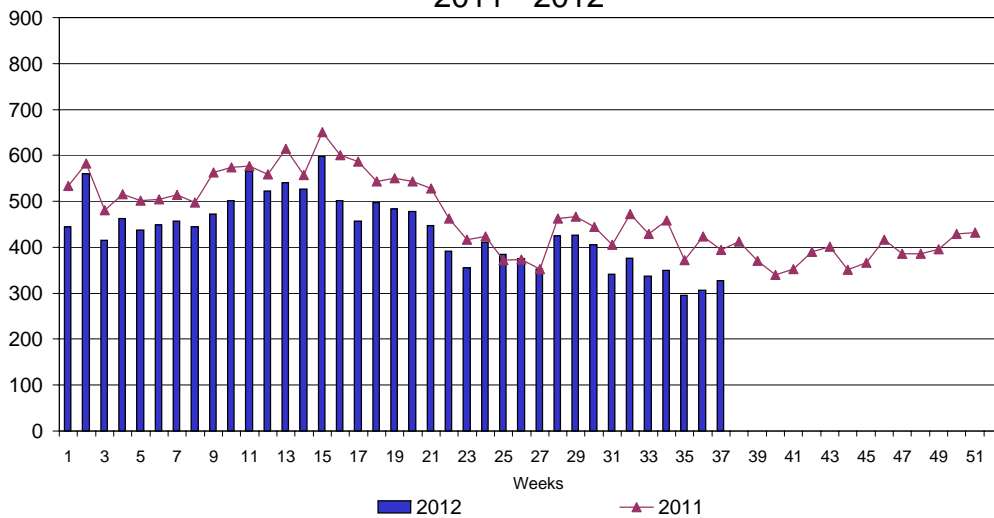
### UI Claims Comparison Year to Date



### UI Initial Claims 2010 - 2012



### UI Exhaustions 2011 - 2012



### TDI Claims Comparison Year to Date

